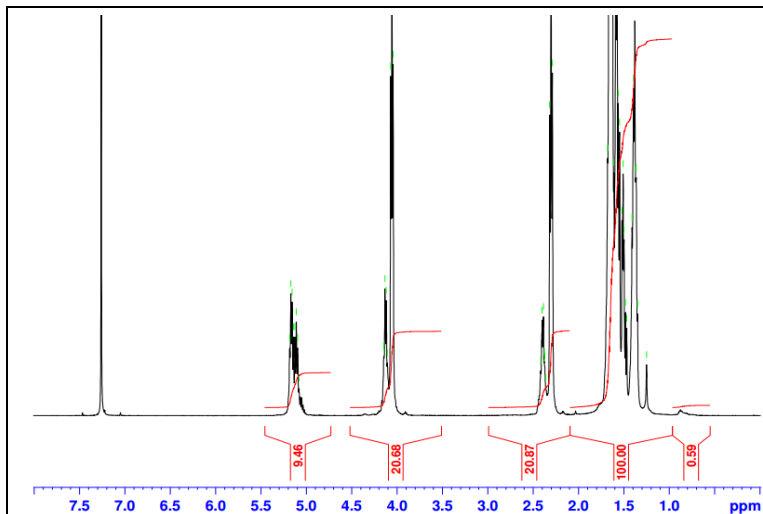


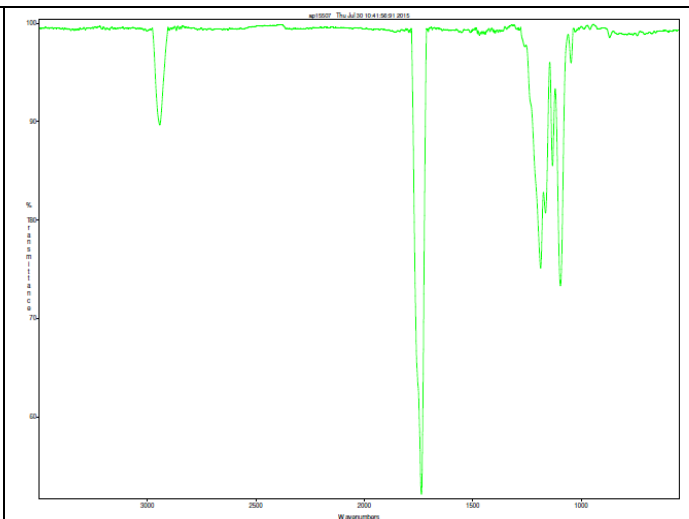
No. AP015

Certificate of Analysis

Product Name: Poly(L-Lactic-co-caprolactone) Copolymer (50:50 LA:CL, M_n : 75,000-85,000 Da) (Lot#: 50727AHT)

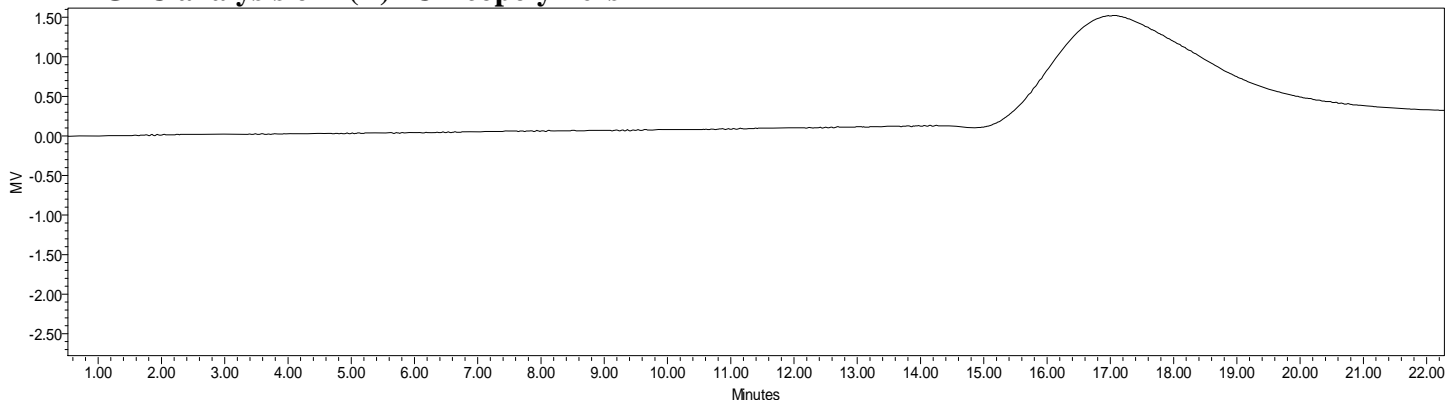


H-NMR Spectrum of P(L)LCL copolymers in CDCl₃ (Varian Inova 500 MHz instrument), NMR of P(L)LCL copolymers:
LA/CL = 48%/52% molar ratio (37%/63% w/w)



FTIR Analysis: Collected from cast-film on KBR salt-plate placed in Satellite FTIR (Thermo-Mattson) and analyzed in transmission mode.

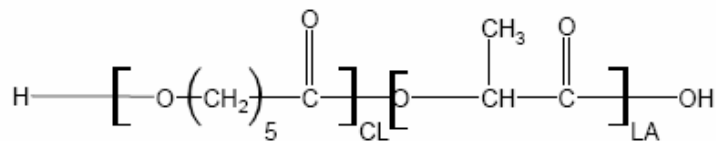
• GPC analysis of P(L)LCL copolymers



Analysis Method: Waters Breeze 2 system with 1 ml/min DCM flow across three Phenogel 5um columns (Phenomenex). Detection via refractive index, calibrated against polystyrene standards.

Polymer	M_n (from GPC)	M_w (from GPC)	PDI
P(L)LCL	75,622	98,299	1.30

• Structure of P(L)LCL copolymers



Material provided for research use only. Not for human use.