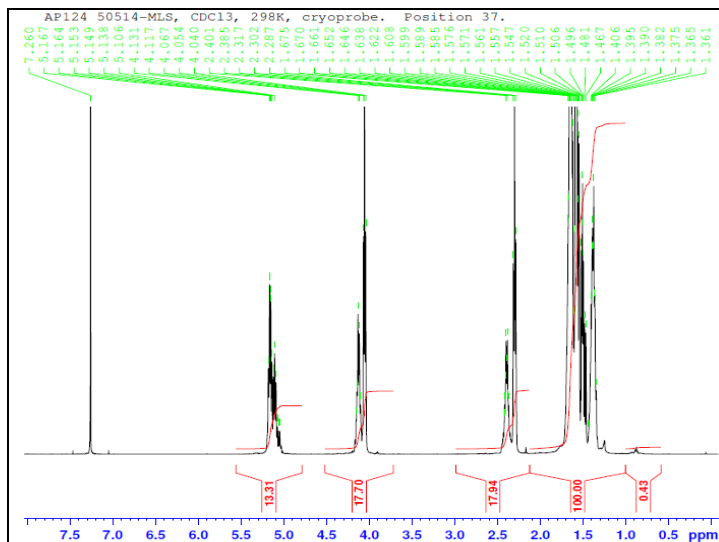


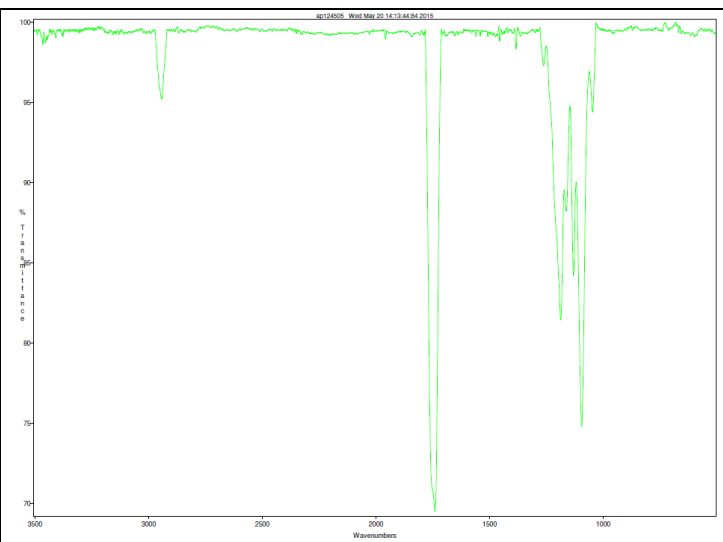
No. AP145

Certificate of Analysis

Product Name: Poly(L-lactide-co-caprolactone) copolymer ester endcap (40:60 LA:CL,
M_n: 100,000-200,000 Da) (Lot#: 50514MLS) REV:A

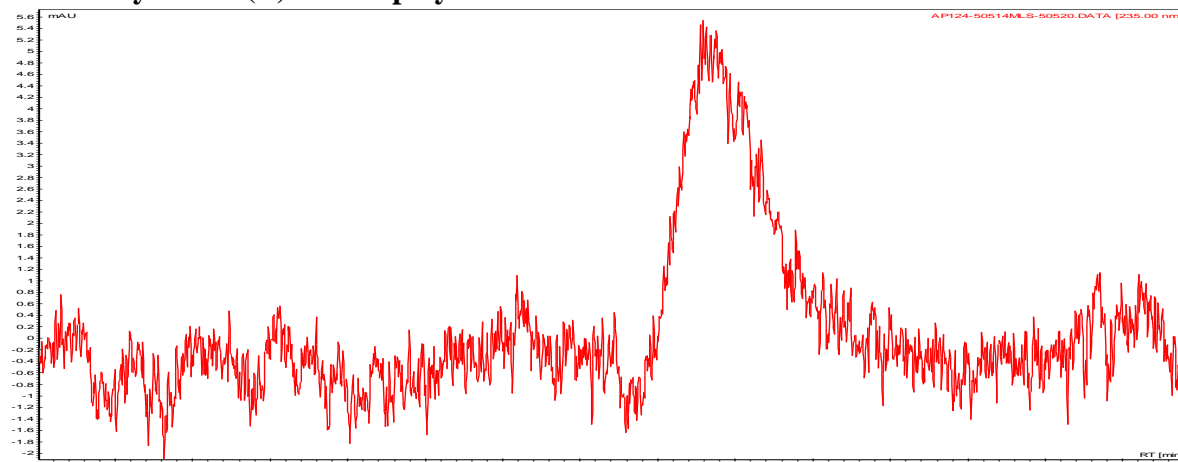


H-NMR Spectrum of P(L)LCL copolymers in CDCl₃ (Varian Inova 500 MHz instrument), NMR of P(L)LCL copolymers:
LA/CL = 44%/56% molar ratio (49%/51% w/w)



FTIR Analysis Method: Collected from cast-film on salt-plate placed in Satellite FTIR (Thermo-Mattson) and analyzed in transmission mode.

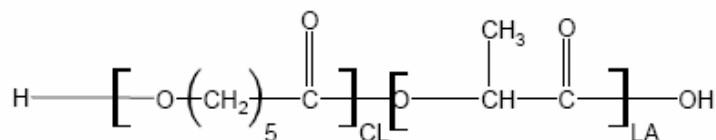
• GPC analysis of P(L)LCL copolymers



Analysis Method: Varian Prostar system with 1 ml/min DCM flow across two Phenogel 5 μm columns and one PLgel Resipore column (Agilent). Detection via UV/Vis, calibrated against polystyrene standards.

Polymer	M _n (from GPC)	M _w (from GPC)	PDI
P(L)LCL	116,118	179,377	1.54

• Structure of P(L)LCL copolymers



Material provided for research use only. Not for human use.