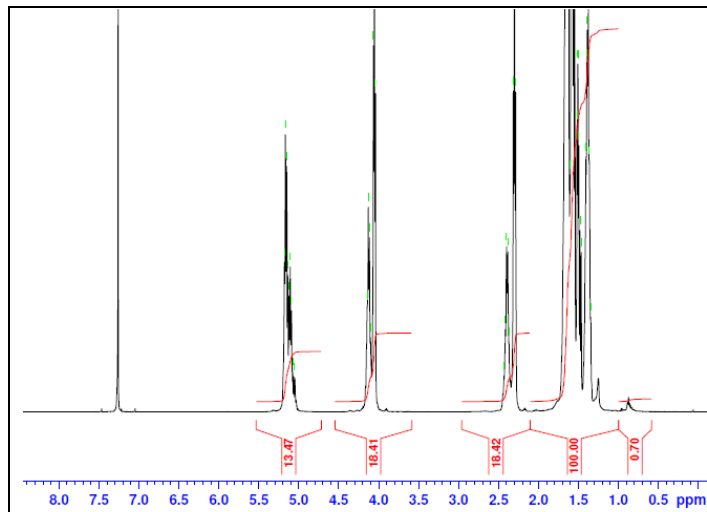


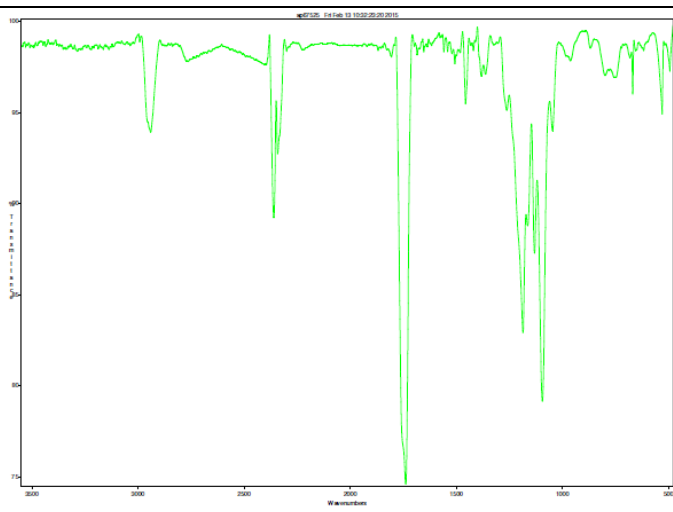
No. AP142

Certificate of Analysis

Product Name: Poly(L-Lactic-co-caprolactone) copolymer (60:40 LA:CL, Mn: 45,000-55,000 Da) (Lot#: 50205SJH) REV:A

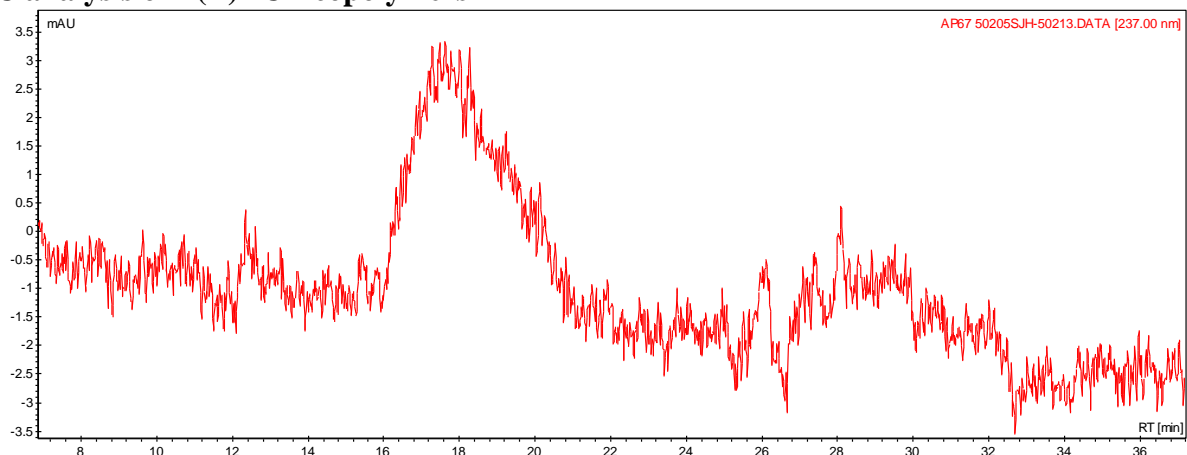


H-NMR Spectrum of P(L)LCL copolymers in CDCl₃ (Varian Inova 500 MHz instrument), NMR of P(L)LCL copolymers: LA/CL = 59%/41% molar ratio (48%/52% w/w)



FTIR Analysis Method: Collected from cast-film on salt-plate placed in Satellite FTIR (Thermo-Mattson) and analyzed in transmission mode.

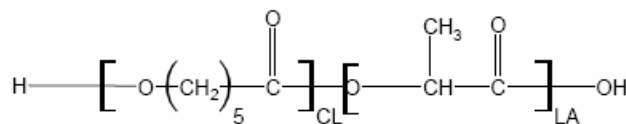
• GPC analysis of P(L)LCL copolymers



Analysis Method: Varian Prostar system with 1 ml/min DCM flow across two Phenogel 5 μ m columns and one PLgel Resipore column (Agilent). Detection via UV/Vis, calibrated against polystyrene standards.

Polymer	Mn (from GPC)	Mw (from GPC)	PDI
P(L)LCL	46,819	118,559	2.53

• Structure of P(L)LCL copolymers



Material provided for research use only. Not for human use.