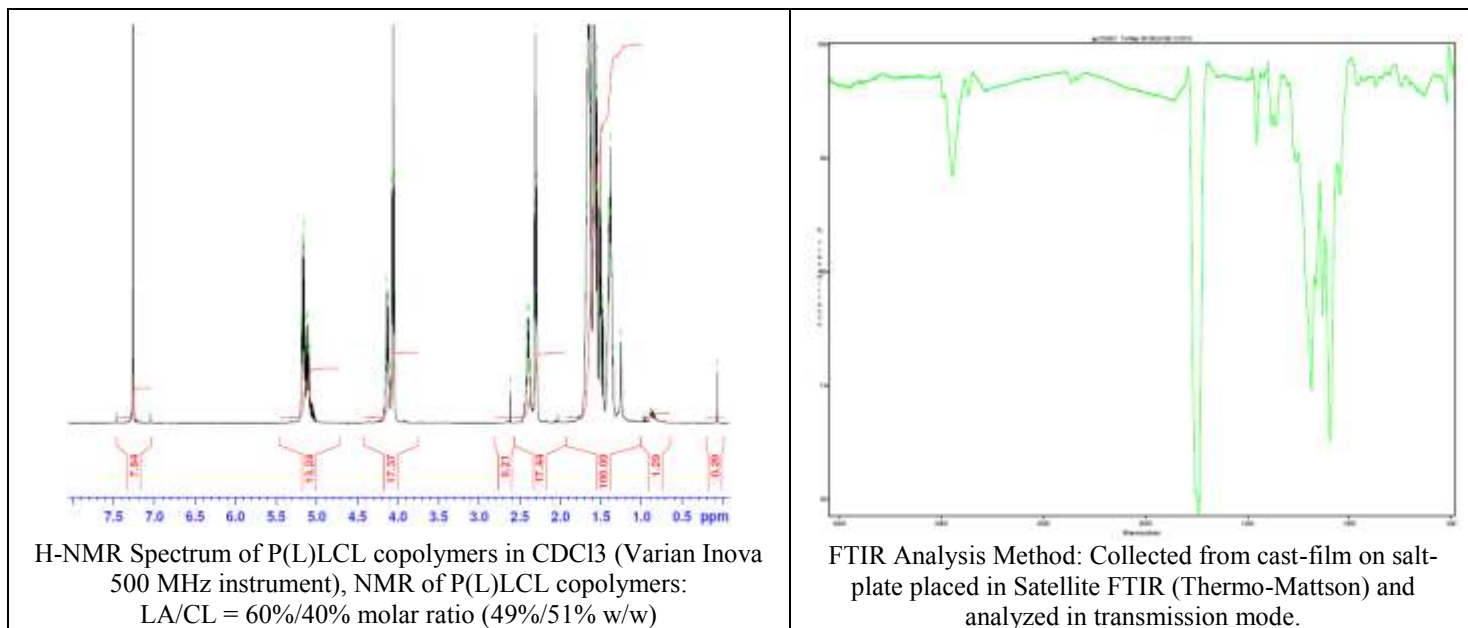


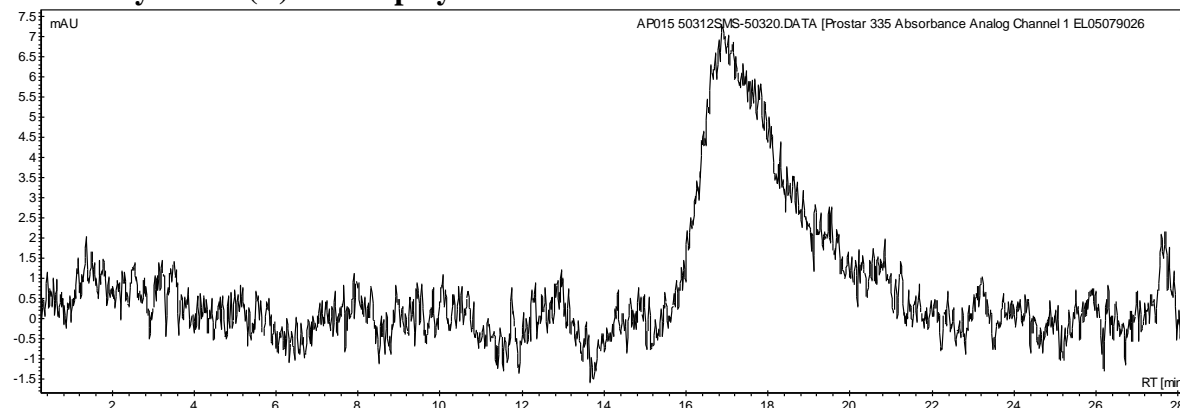
No. AP141

Certificate of Analysis

Product Name: Poly(L-Lactic-co-caprolactone) copolymer (60:40 LA:CL w/w, M_n : 75,000-85,000 Da) (Lot#: 50312SMS) REV:A



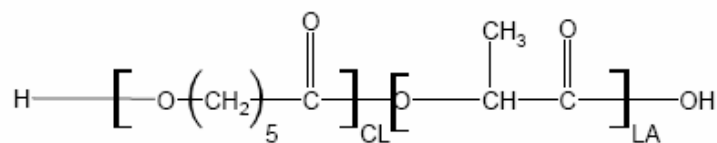
- **GPC analysis of P(L)LCL copolymers**



Analysis Method: Varian Prostar system with 1 ml/min DCM flow across two Phenogel 5 μ m columns and one PLgel Resipore column (Agilent). Detection via UV/Vis, calibrated against polystyrene standards.

Polymer	M_n (from GPC)	M_w (from GPC)	PDI
P(L)LCL	78,635	182,694	2.32

- **Structure of P(L)LCL copolymers**



Material provided for research use only. Not for human use.