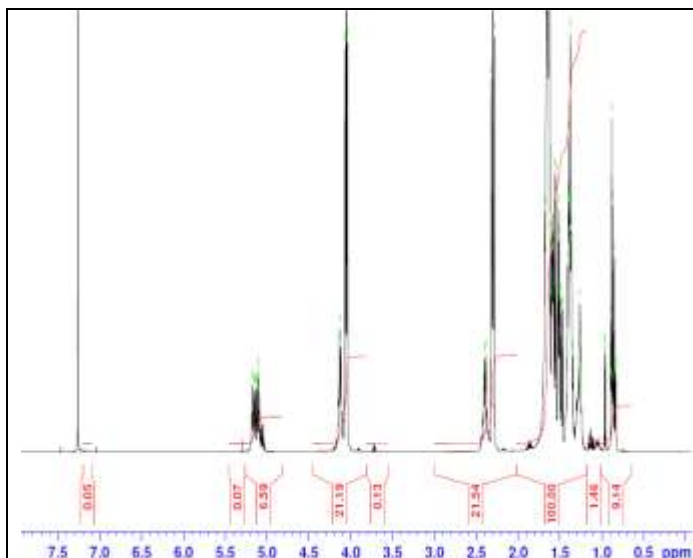


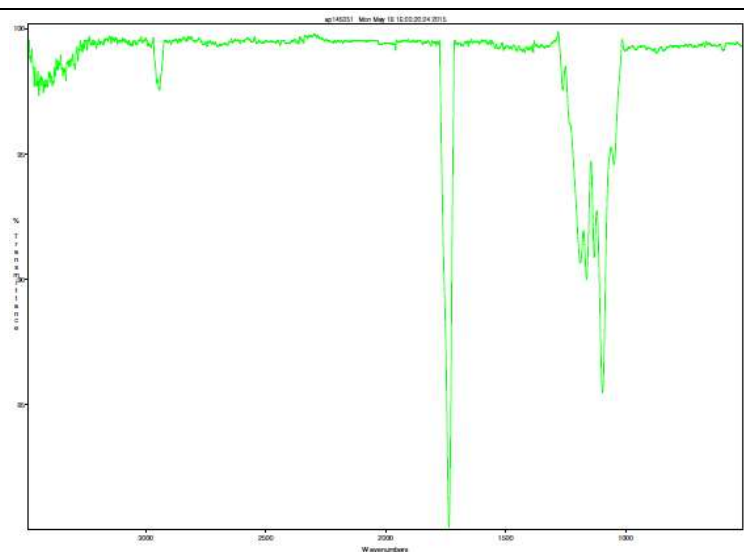
No. AP140

Certificate of Analysis

Product Name: Poly(L-Lactide-co-caprolactone) copolymer (40:60 LA:CL, M_n : 35,000-45,000 Da) acid endcap (Lot#: 50513FAJ) REV:A

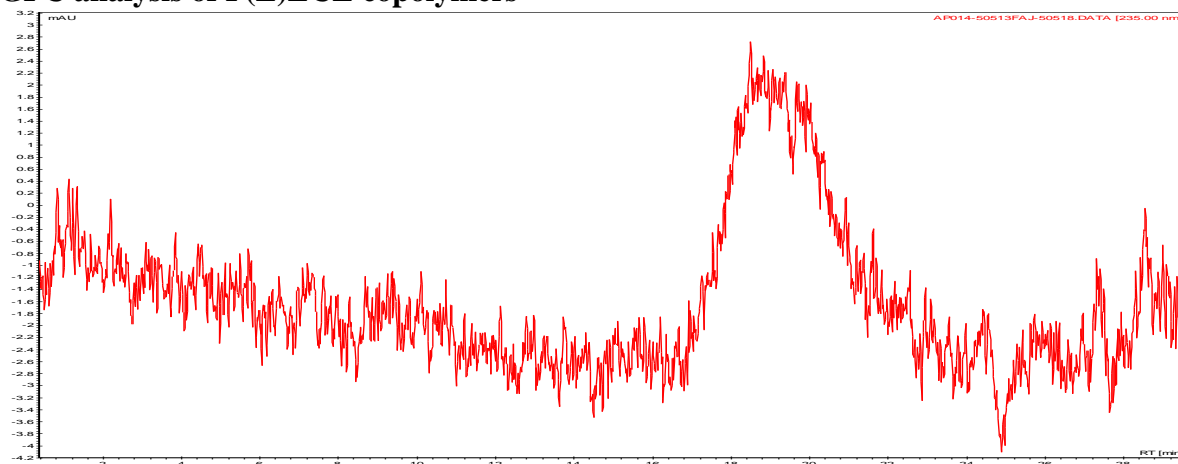


$^1\text{H-NMR}$ Spectrum of P(L)LCL copolymers in CDCl_3 (Varian Inova 500 MHz instrument), NMR of P(L)LCL copolymers: LA/CL = 38%/62% molar ratio (28%/72% w/w)



FTIR Analysis Method: Collected from cast-film on salt-plate placed in Satellite FTIR (Thermo-Mattson) and analyzed in transmission mode.

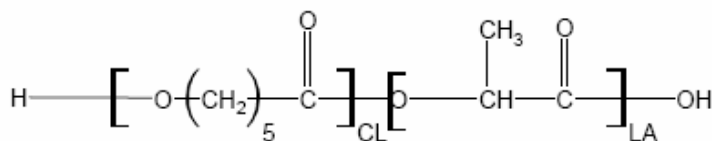
- **GPC analysis of P(L)LCL copolymers**



Analysis Method: Varian Prostar system with 1 ml/min DCM flow across two Phenogel 5 μm columns and one PLgel Resipore column (Agilent). Detection via UV/Vis, calibrated against polystyrene standards.

Polymer	M_n (from GPC)	M_w (from GPC)	PDI
P(L)LCL	35,063	72,521	2.07

- **Structure of P(L)LCL copolymers**



Material provided for research use only. Not for human use.