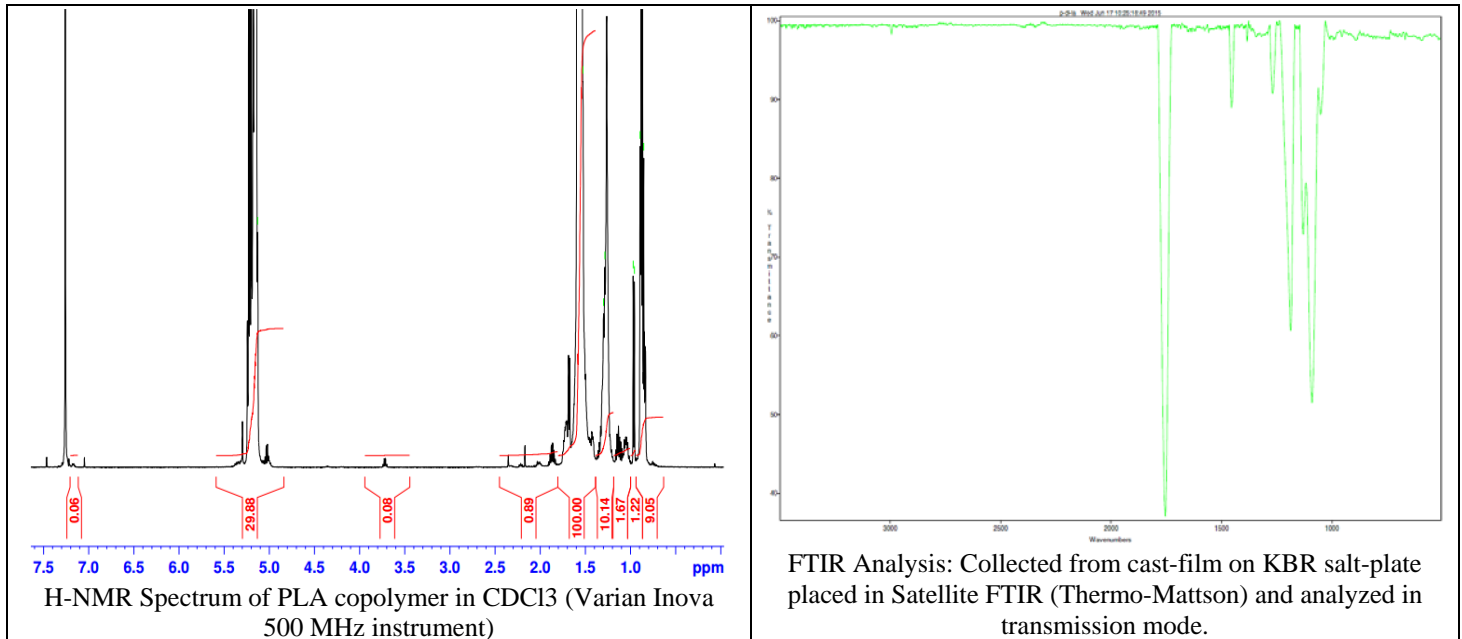


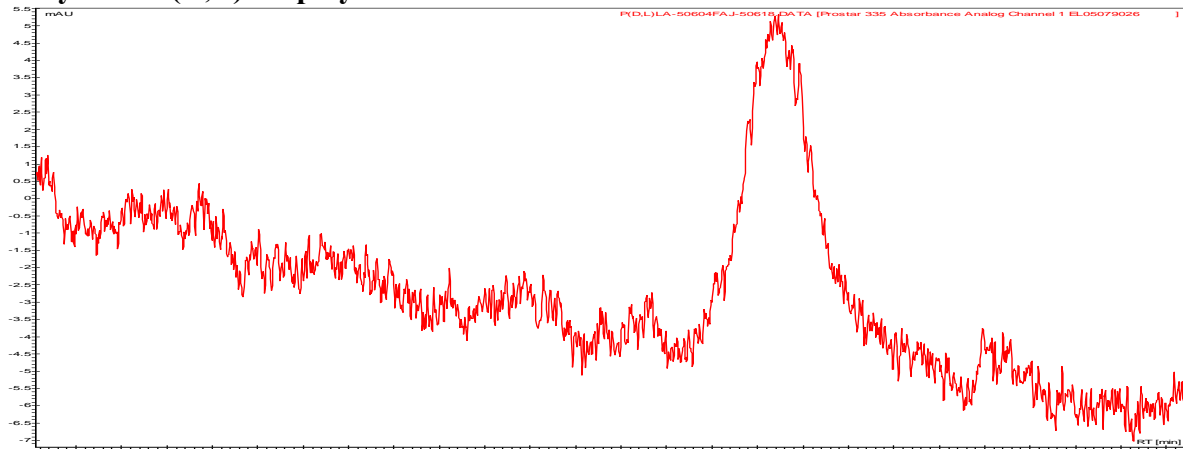
No. AP138

Certificate of Analysis

Product Name: Poly(D,L-lactide) acid end cap (Mn 100,000-200,000 Da) (Lot#:50609FAJ)



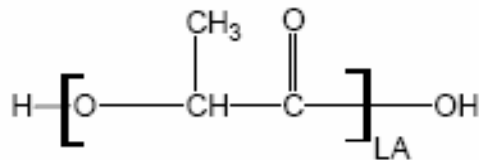
- GPC analysis of P(D,L)LA polymer



Analysis Method: Varian Prostar system with 1 ml/min DCM flow across two PLgel mixed-D columns and one Mixed-E column (Agilent). Detection via UV/Vis, calibrated against polystyrene standards

Polymer	Mn (from GPC)	Mw (from GPC)	PDI
P(D,L)LA	128,119	193,956	1.51

- Structure of P(D,L)LA polymer



Material provide for research use only. Not for human use.