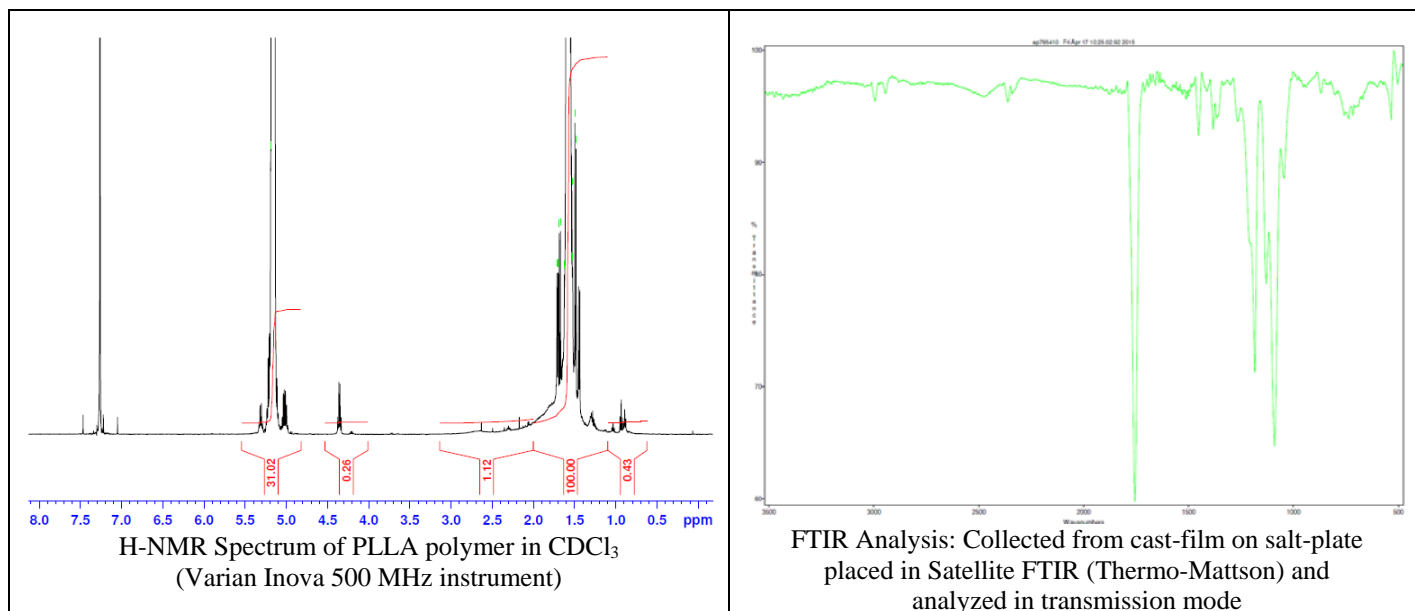
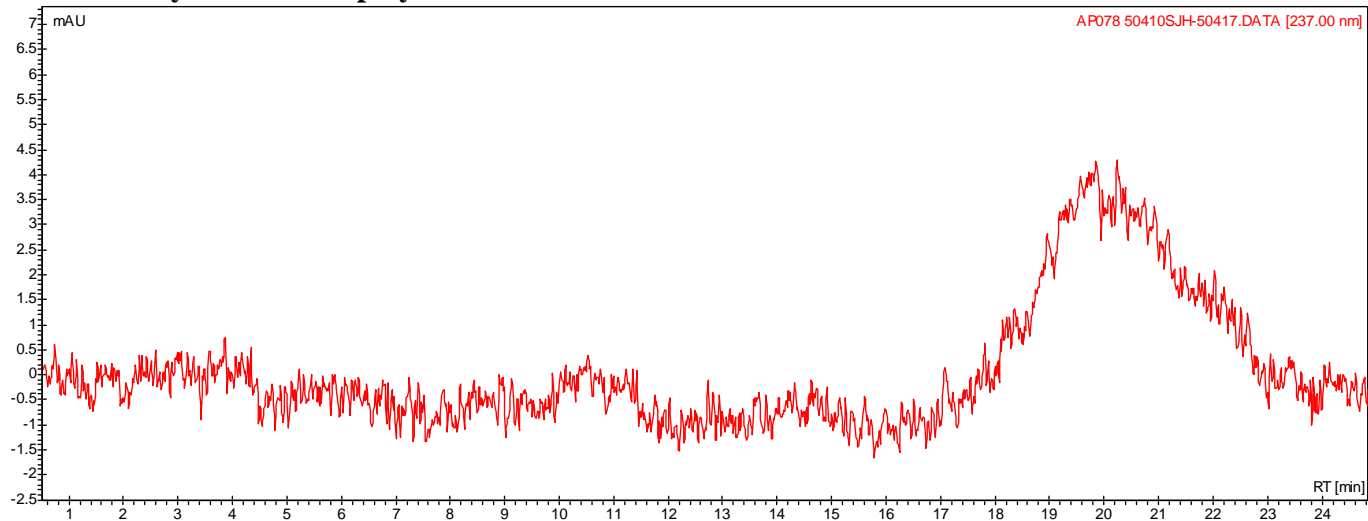


No. AP128 Certificate of Analysis

Product Name: Poly(L-lactic acid) acid endcap (M_n : 15,000-25,000 Da) (Lot#: 50410SJH)



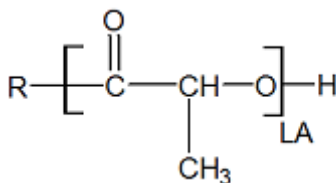
- GPC analysis of PLLA polymer



Analysis Method: Varian Prostar system with 1 ml/min DCM flow across two Phenogel 5 μ m columns and one PLGel Resipore column (Agilent). Detection via UV/Vis, calibrated against polystyrene standards.

Polymer	M_n (from GPC)	M_w (from GPC)	PDI
PLLA	15,396	34,273	2.23

- Structure of PLLA polymer



Material provided for research use only. Not for human use.