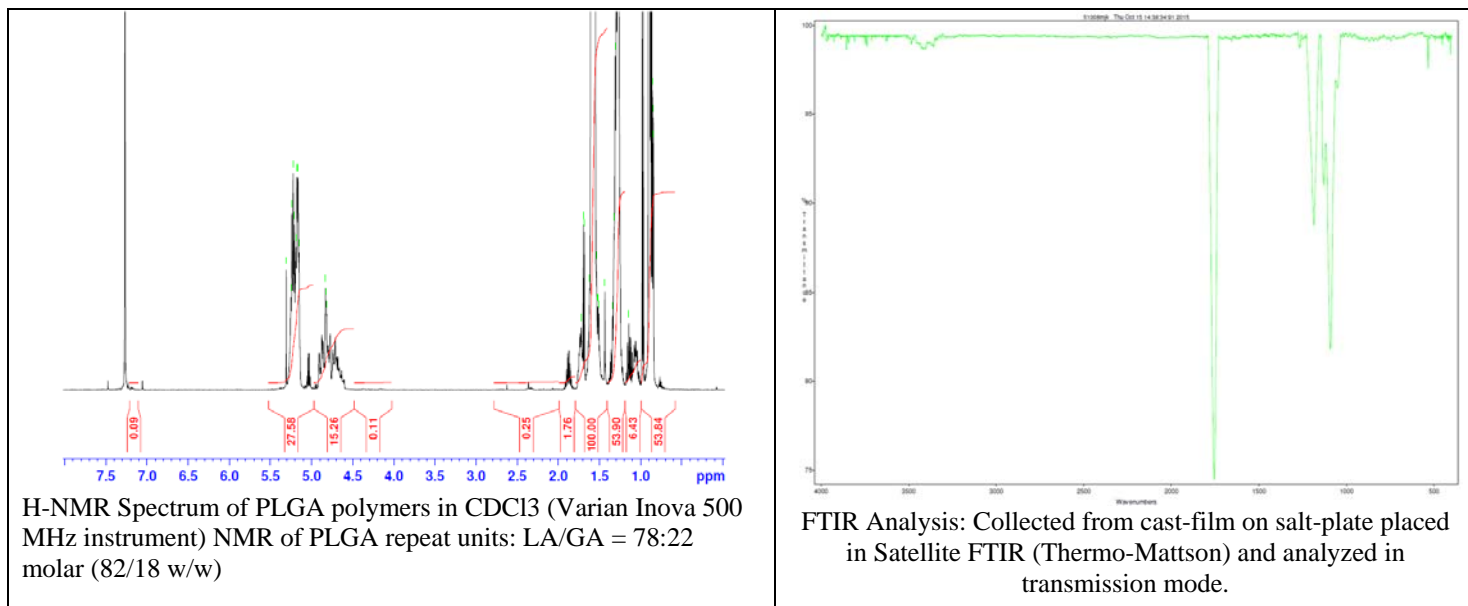
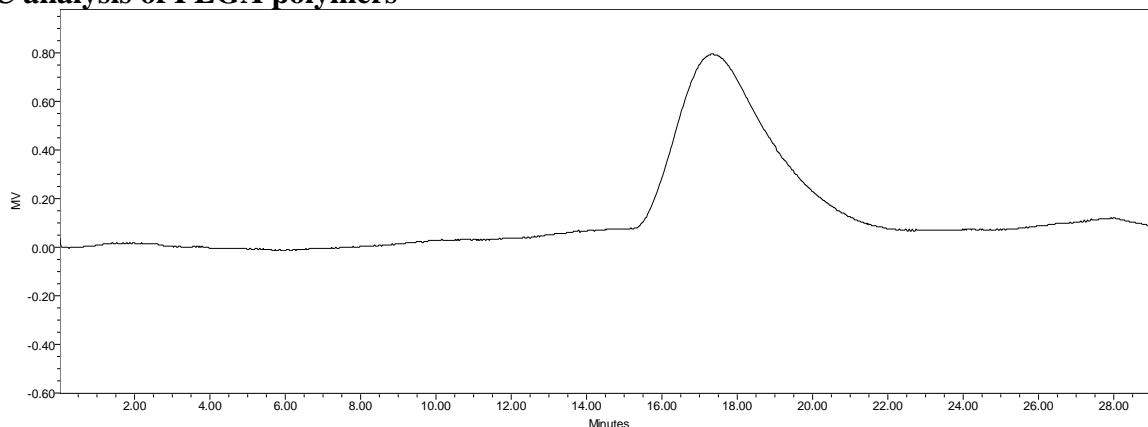


No. AP125 Certificate of Analysis

Product Name: Poly(lactide-co-glycolide) ester endcapped (Mn: 75,000-85,000 Da, LA:GA 75:25) (Lot#: 51008MJK)



- **GPC analysis of PLGA polymers**



Analysis Method: Waters Breeze 2 system with 1 ml/min DCM flow across two Phenogel 5 μ m columns and one PLgel Resipore column (Agilent). Detection via UV/Vis, calibrated against polystyrene standards.

Polymer	Mn (from GPC)	Mw (from GPC)	PDI
PLGA	75,743	106,263	1.40

- **Structure of PLGA polymers**

