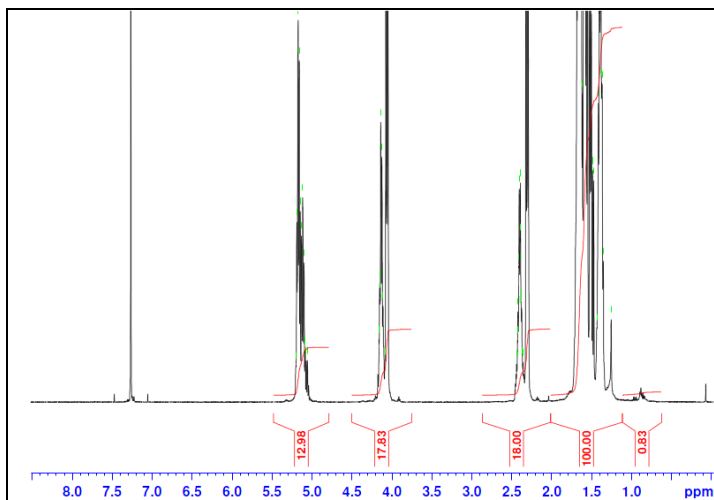


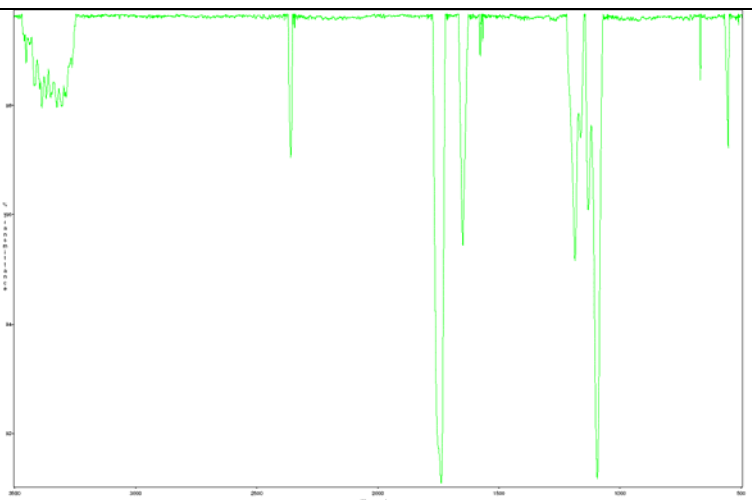
No. AP124

Certificate of Analysis

Product Name: Poly(L-lactide-co-caprolactone) Copolymer ester end-capped (50:50 LA:GA w/w, 60:40 LA:CL m/m, M_n : 100,000-200,000 Da) (Lot#: 60629EJF-A)

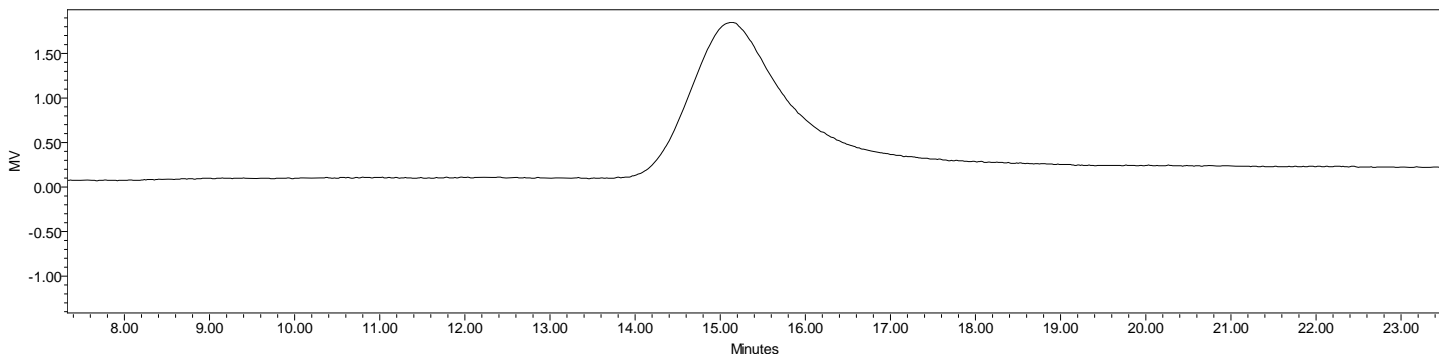


H-NMR Spectrum of P(L)LCL copolymers in CDCl₃ (Varian Inova 500 MHz instrument), NMR of P(L)LCL copolymers: LA/CL = 48%/52% w/w (59%/41% molar ratio)



FTIR Analysis: Collected from cast-film on KBr salt-plate placed in Satellite FTIR (Thermo-Mattson) and analyzed in transmission mode.

- **GPC analysis of P(L)LCL copolymers**



Analysis Method: Varian Prostar system with 1 ml/min DCM flow across two Phenogel 5 μ m columns and one PLgel Resipore column (Agilent). Detection via UV/Vis, calibrated against polystyrene standards.

Polymer	M_n (from GPC)	M_w (from GPC)	PDI
P(L)LCL	120,813	151,915	1.26

- **Structure of P(L)LCL copolymers**

