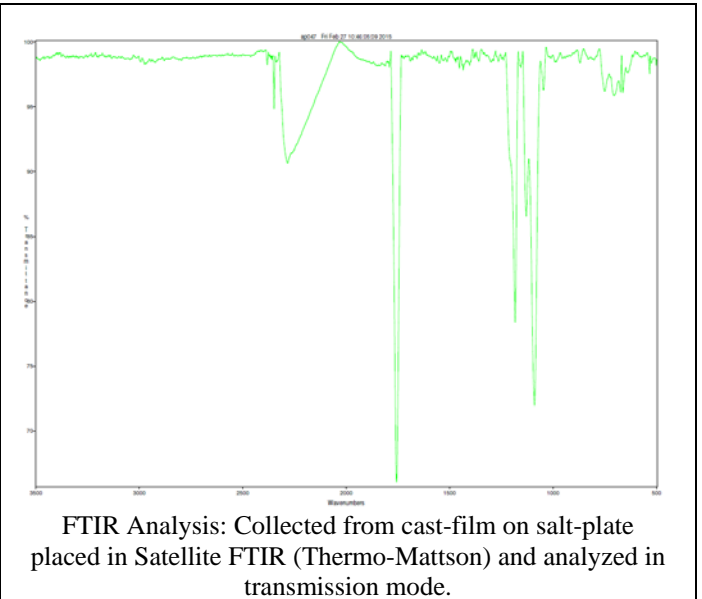
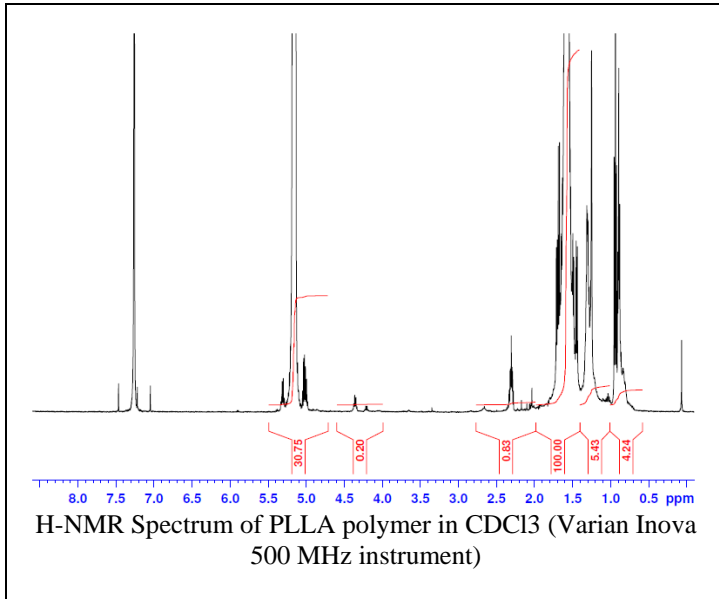
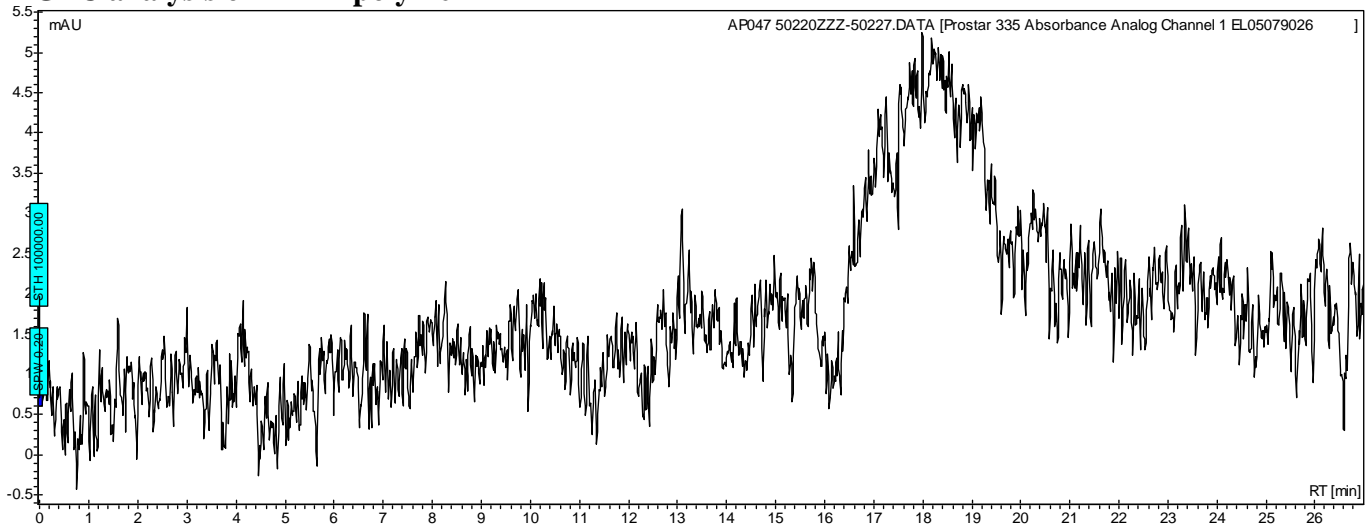


# No. AP123 Certificate of Analysis

Product Name: Poly((L)Lactic acid) acid endcap ( $M_N$ : 75,000-85,000 Da) (Lot#: 50220ZZZ)



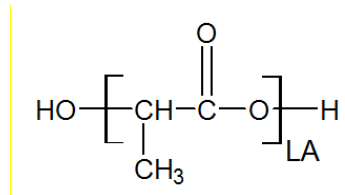
- **GPC analysis of PLLA polymer**



Analysis Method: Varian Prostar system with 1 ml/min DCM flow across two 5  $\mu$ m Phenogel columns and one PLGel Resipore column (Agilent). Detection via UV/Vis, calibrated against polystyrene standards.

| Polymer | Mn (from GPC) | Mw (from GPC) | PDI  |
|---------|---------------|---------------|------|
| PLLA    | 80,219        | 115,968       | 1.45 |

- **Structure of PLLA polymer**



Material provided for research use only. Not for human use.