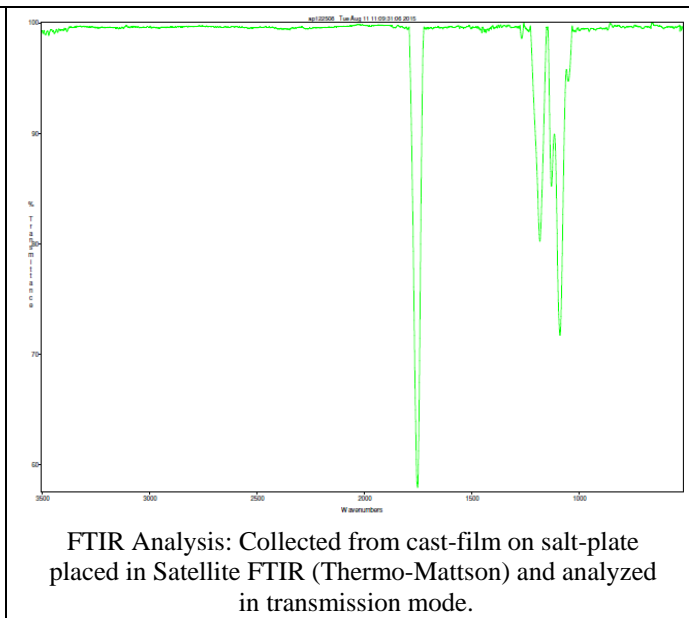
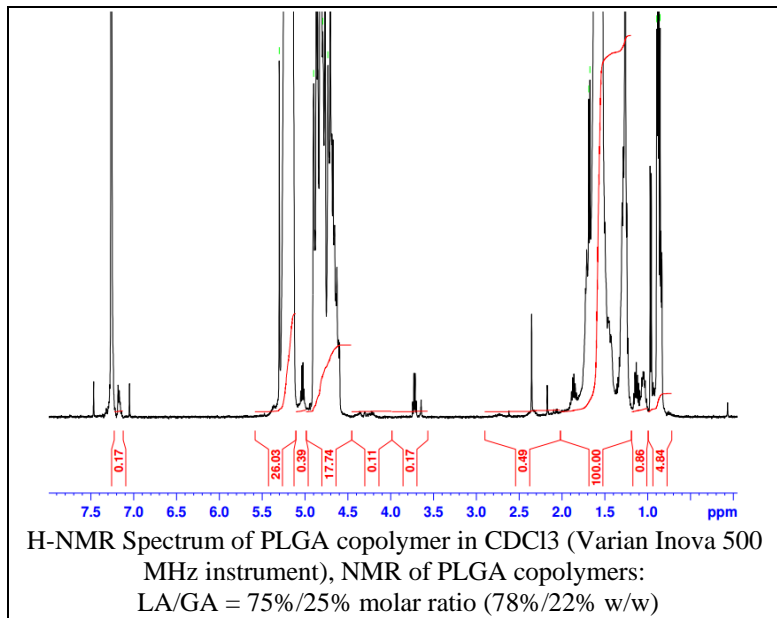


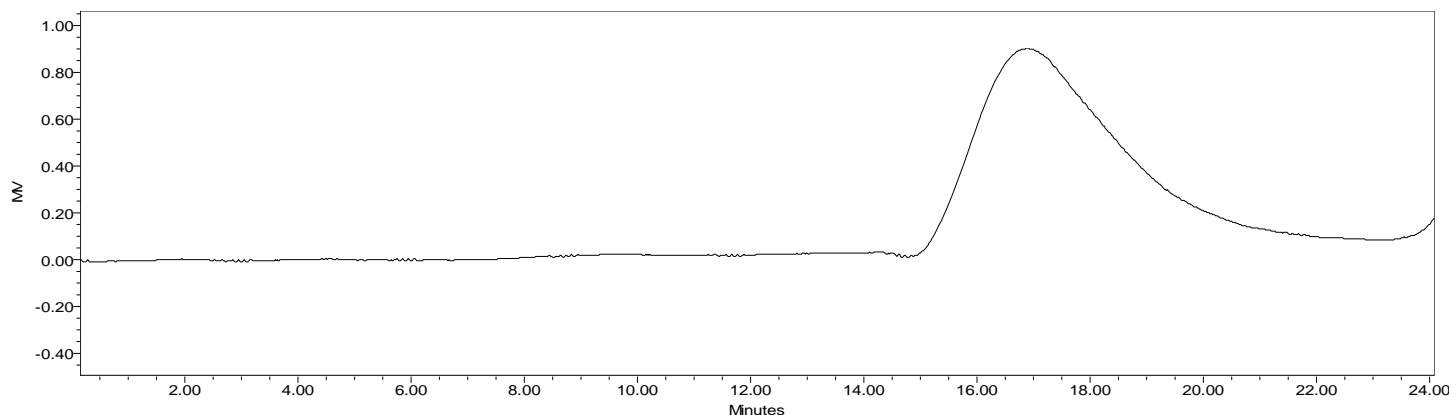
# No. AP122

# Certificate of Analysis

Product Name: Poly(lactic-co-glycolic acid) acid end-capped (75:25 LA:GA,  $M_n$ : 75,000-85,000 Da) (Lot#: 50803MLS)

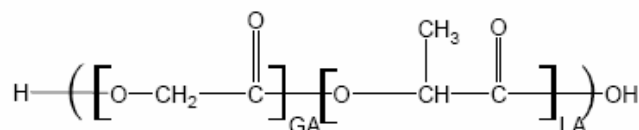


## • GPC of PLGA copolymers



Polymer	Mn (from GPC)	Mw (from GPC)	PDI
PLGA	75,113	103,898	1.38

## • Structure of PLGA copolymers



Material provided for research use only. Not for human use.