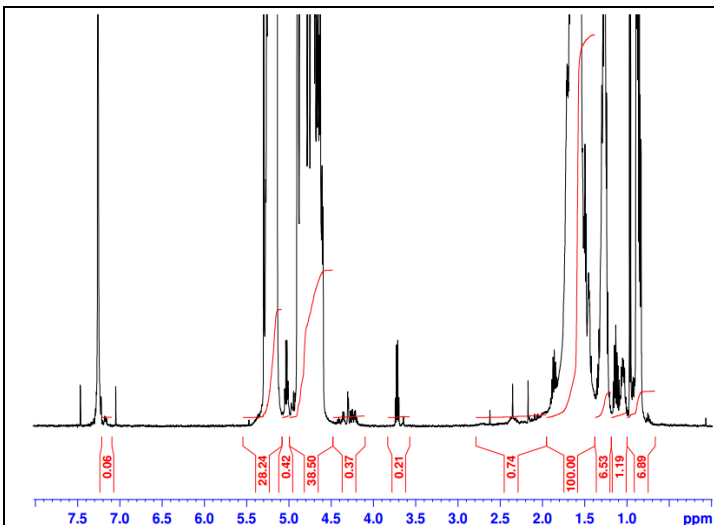


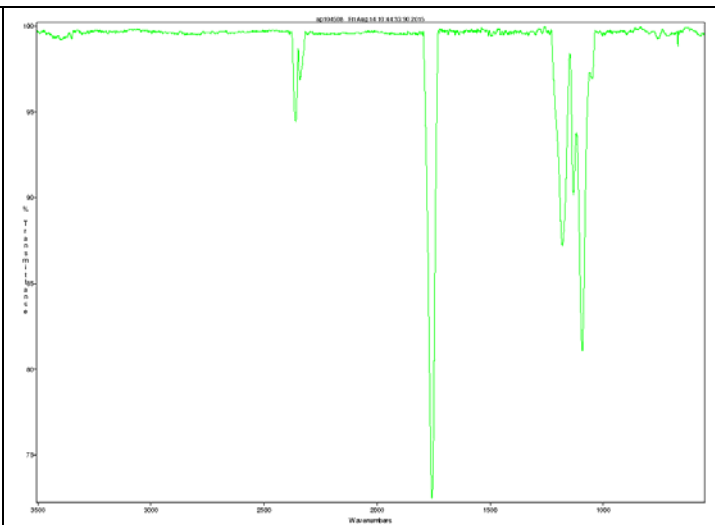
No. AP104

Certificate of Analysis

Product Name: Poly(L-Lactide-co-Glycolide) Copolymer (60:40 LA:GA, Mn: 25,000-35,000 Da) (Lot#: 50804MLS)

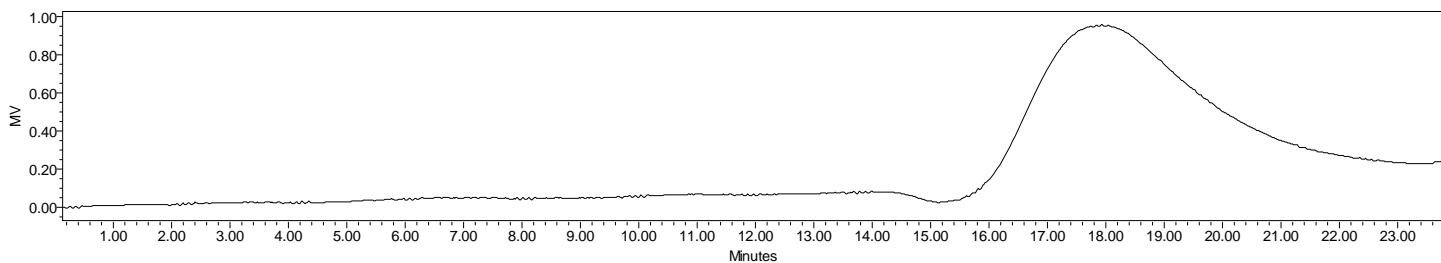


H-NMR Spectrum of P(L)LGA copolymers in CDCl₃ (Varian Inova 500 MHz instrument), NMR of P(L)LGA copolymers: LA/GA = 59%/41% molar ratio (65%/35% w/w)



FTIR Analysis: Collected from cast-film on KBR salt-plate placed in Satellite FTIR (Thermo-Mattson) and analyzed in transmission mode.

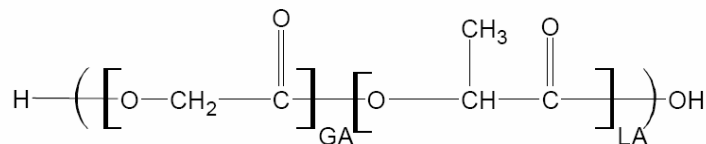
• GPC analysis of P(L)LCL copolymers



Analysis Method: Waters Breeze 2 system with 1 ml/min DCM flow across three Phenogel 5um columns (Phenomenex). Detection via refractive index, calibrated against polystyrene standards.

Polymer	Mn (from GPC)	Mw (from GPC)	PDI
P(L)LCL	29,855	58,036	1.94

• Structure of PLLGA copolymers



Material provided for research use only. Not for human use.