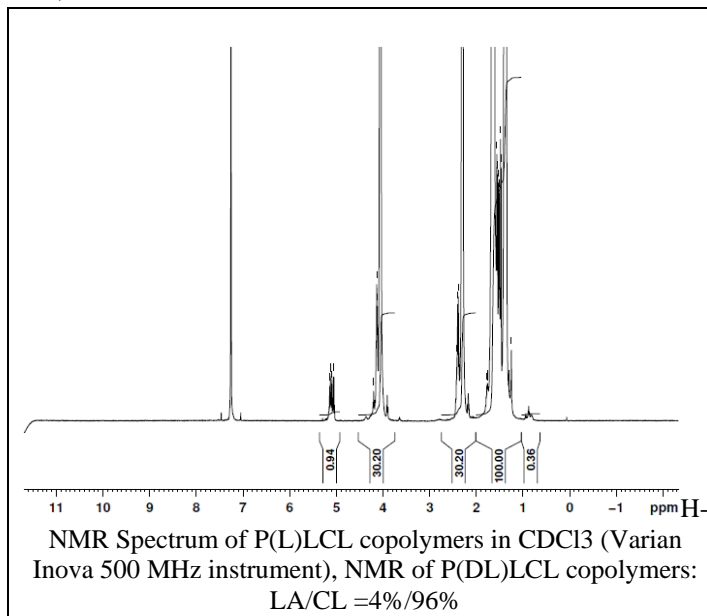


No. AP102

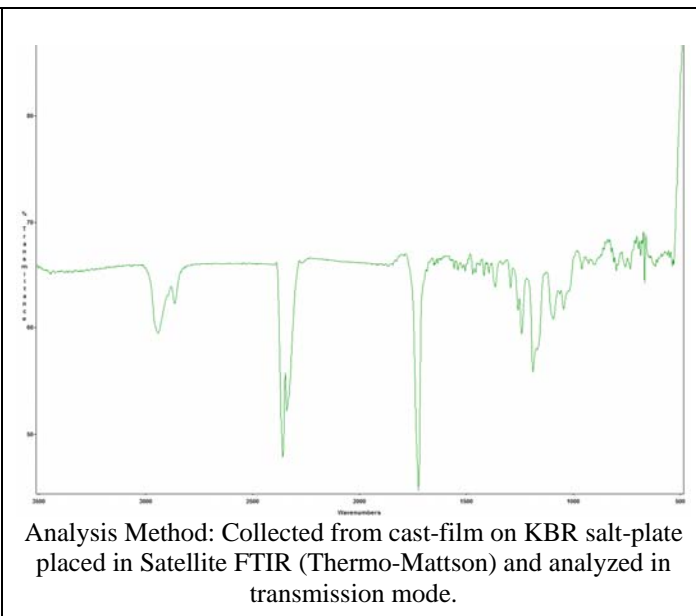
Certificate of Analysis

Product Name: Poly(DL-Lactide-co-caprolactone) copolymer (5:95 LA:CL, Mn: 45,000-55,000 Da) (Lot#: 31028AHT)

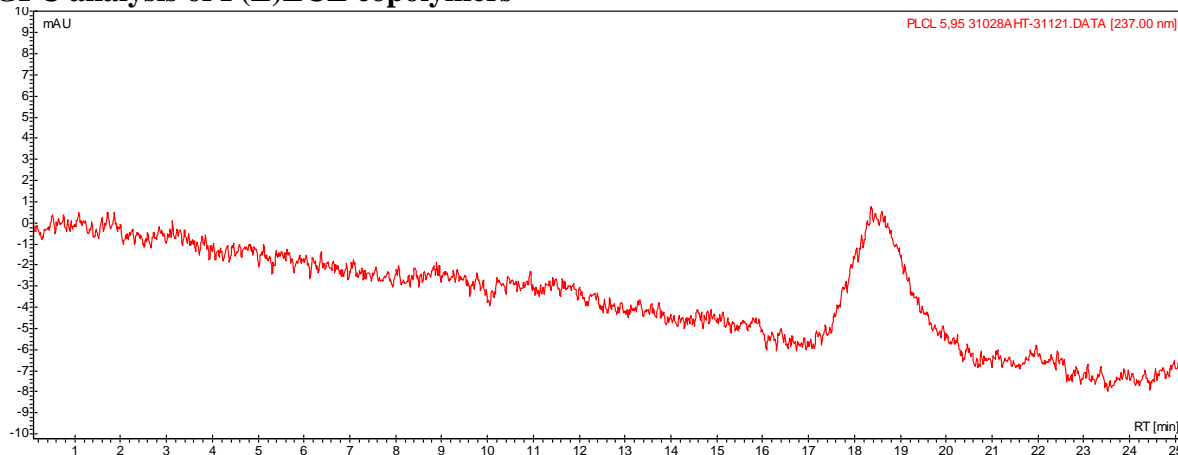
H-NMR



FTIR



- **GPC analysis of P(L)LCL copolymers**



Analysis Method: Varian Prostar system with 1 ml/min DCM flow across two Phenogel 5u columns and one PLgel Resipore column (Agilent). Detection via UV/Vis, calibrated against polystyrene standards

Polymer	Mn (from GPC)	Mw (from GPC)	PDI
P(DL)LCL	53,927	80,009	1.49

- **Structure of P(DL)LCL copolymers**

