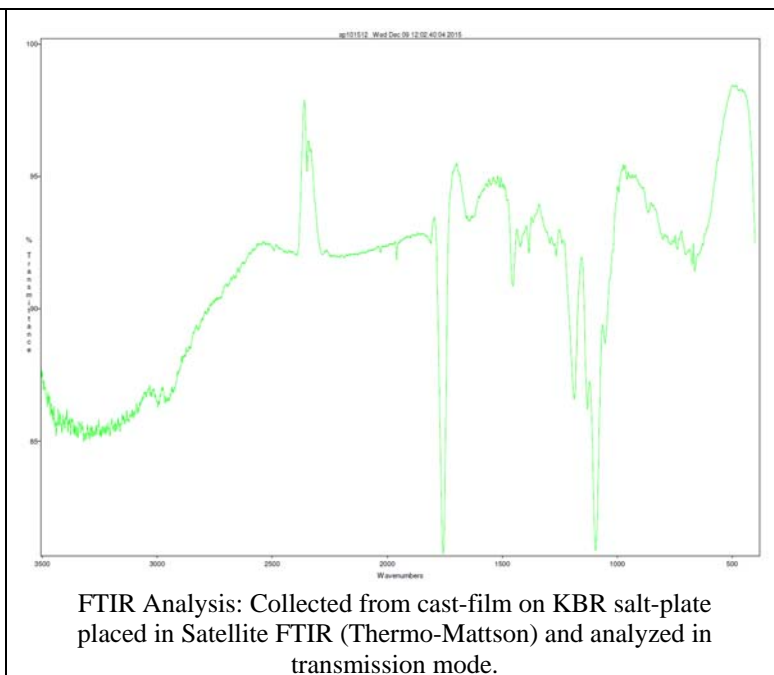
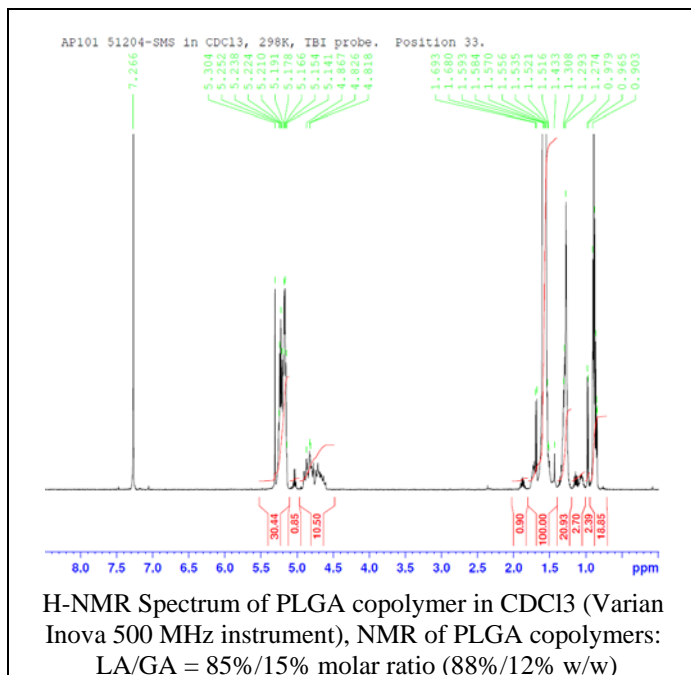
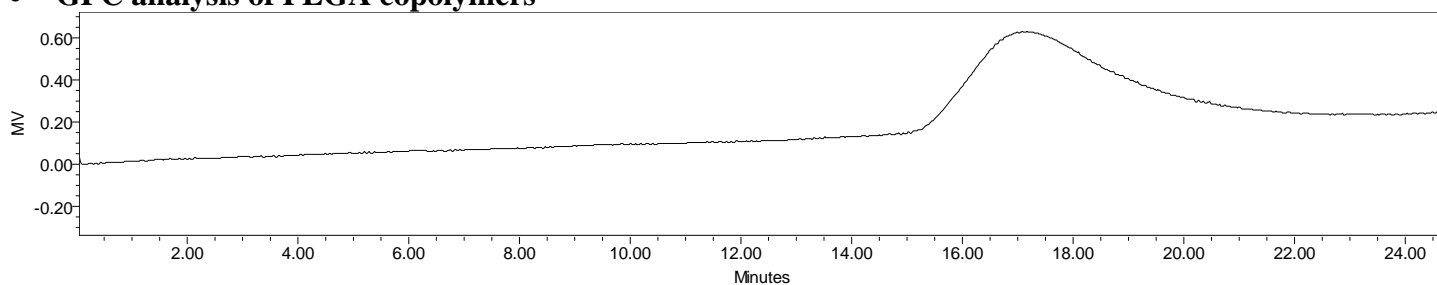


No. AP101 Certificate of Analysis

Product Name: Poly(lactic-co-glycolic acid) ester endcap (85:15 LA:GA, Mn: 85,000-100,000Da) (Lot#: 51204SMS)



- GPC analysis of PLGA copolymers**



Analysis Method: Waters Breeze 2 system with 1 ml/min DCM flow across three Phenogel 5um columns (Phenomenex). Detection via refractive index, calibrated against polystyrene standards.

Polymer	Mn (from GPC)	Mw (from GPC)	PDI
PLGA	85,504	115,927	1.36

- Structure of PLGA copolymers**

