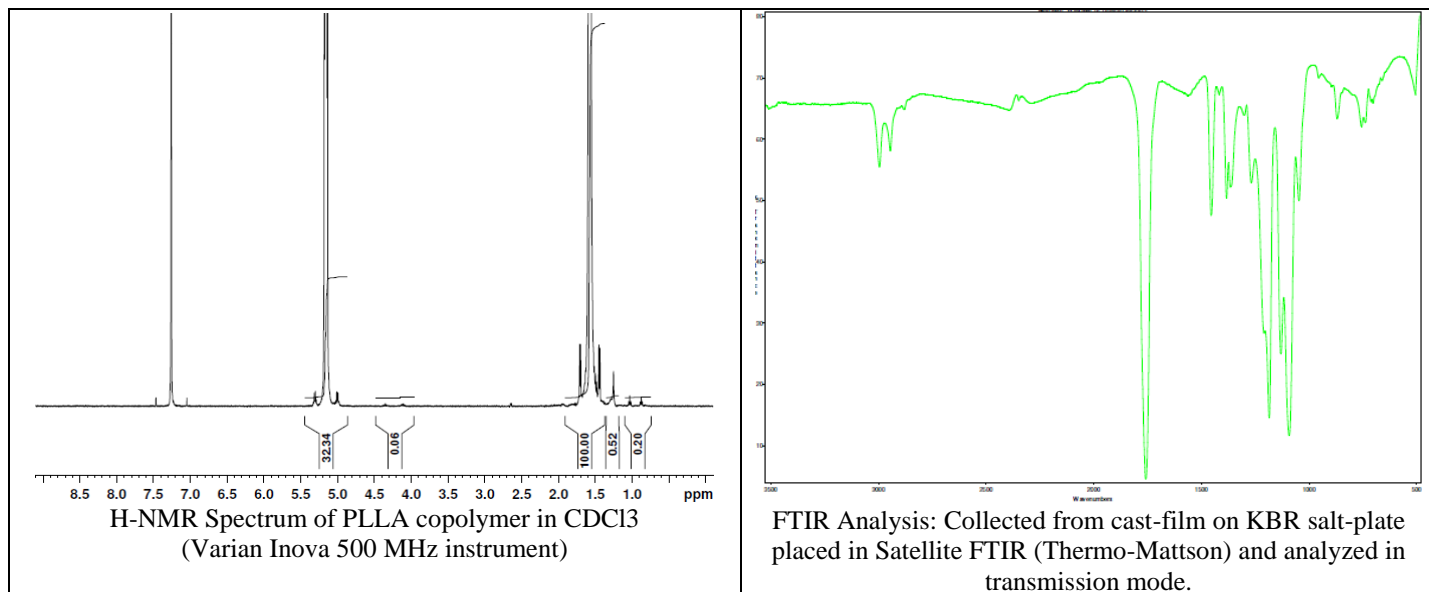
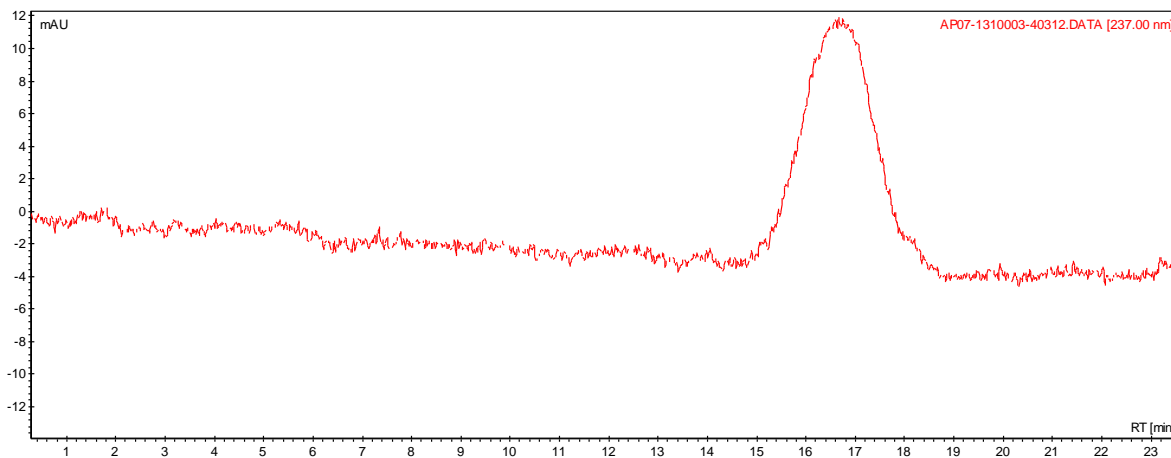


# No. AP07 Certificate of Analysis

Product Name: Poly(L-lactic) acid polymer acid endcapped ( $M_n$  125,00-150,000 Da)  
(Lot#: 1310003)



- GPC analysis of PLLA polymer



Analysis Method: Varian Prostar system with 1 ml/min DCM flow across two Phenogel 5 $\mu$ m columns and one Resipore column (Agilent). Detection via UV/Vis, calibrated against polystyrene standards

Polymer	$M_n$ (from GPC)	$M_w$ (from GPC)	PDI
PLLA	125,354	212,453	1.69

- Structure of PLLA polymer

