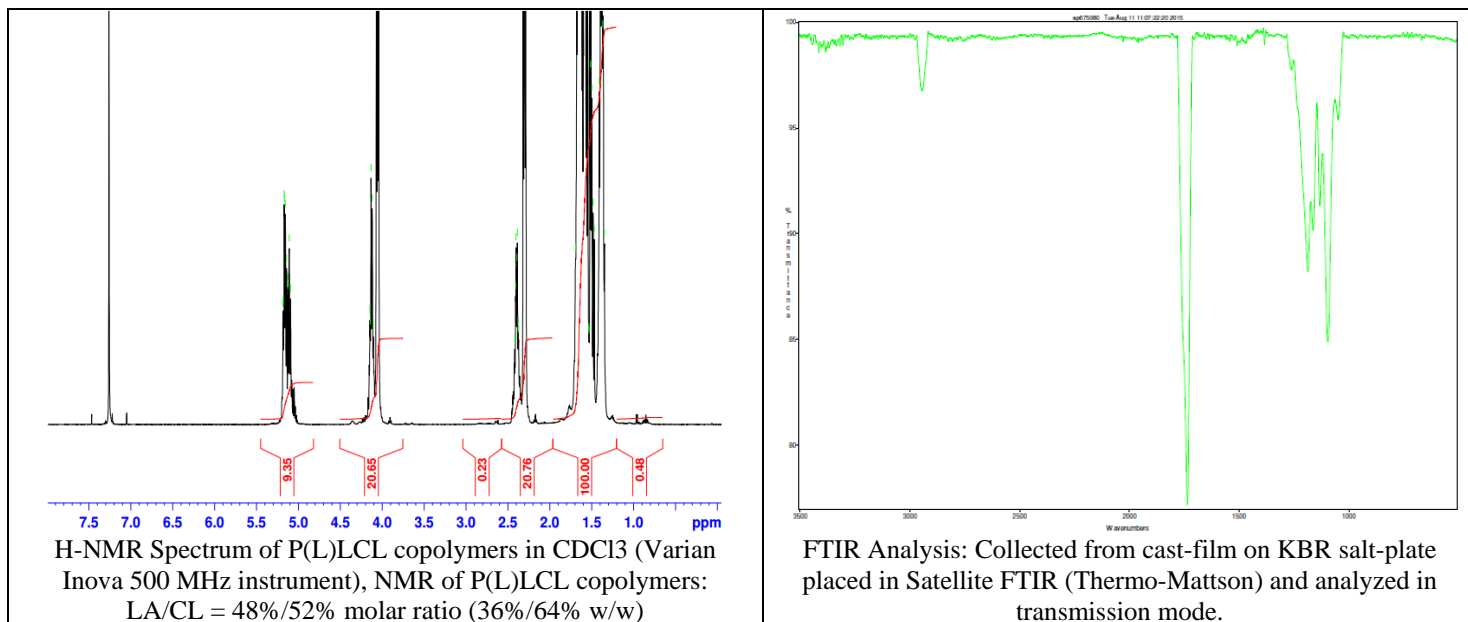


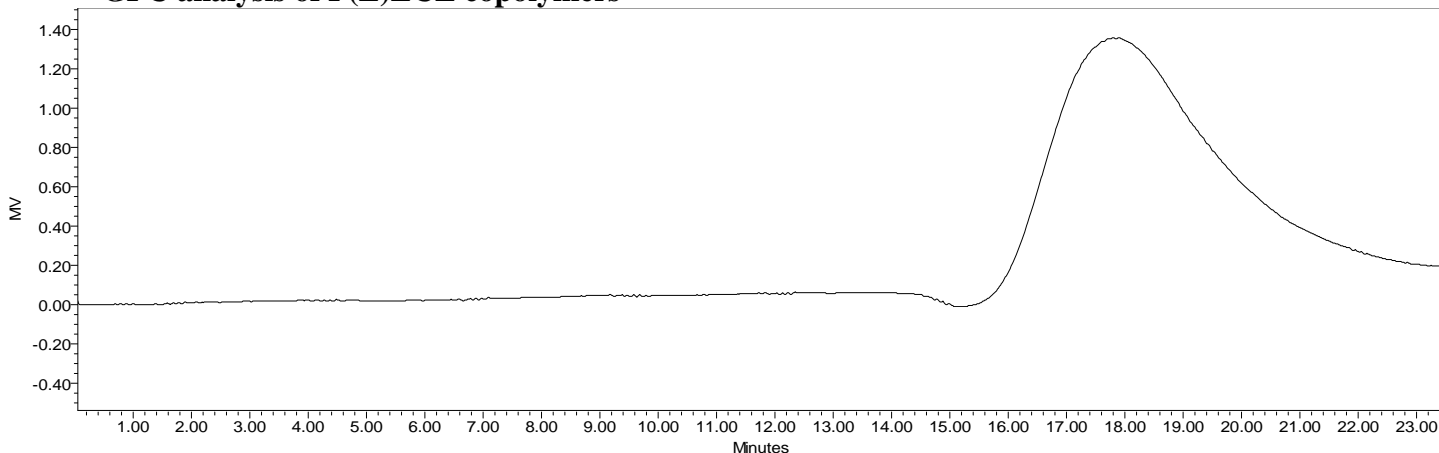
No. AP067

Certificate of Analysis

Product Name: Poly(L-Lactic-co-caprolactone) Copolymer ester endcap (50:50 LA:CL, M_n : 45,000-55,000 Da) (Lot#: 50804MJK)



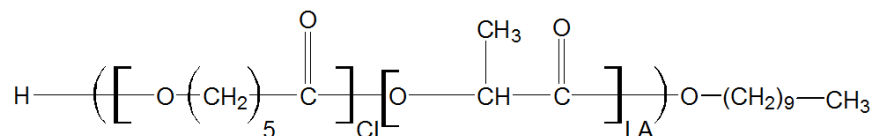
• GPC analysis of P(L)LCL copolymers



Analysis Method: Waters Breeze 2 system with 1 ml/min DCM flow across three Phenogel 5um columns (Phenomenex). Detection via refractive index, calibrated against polystyrene standards.

Polymer	M_n (from GPC)	M_w (from GPC)	PDI
P(L)LCL	46,120	67,042	1.45

• Structure of P(L)LCL copolymers



Material provided for research use only. Not for human use.