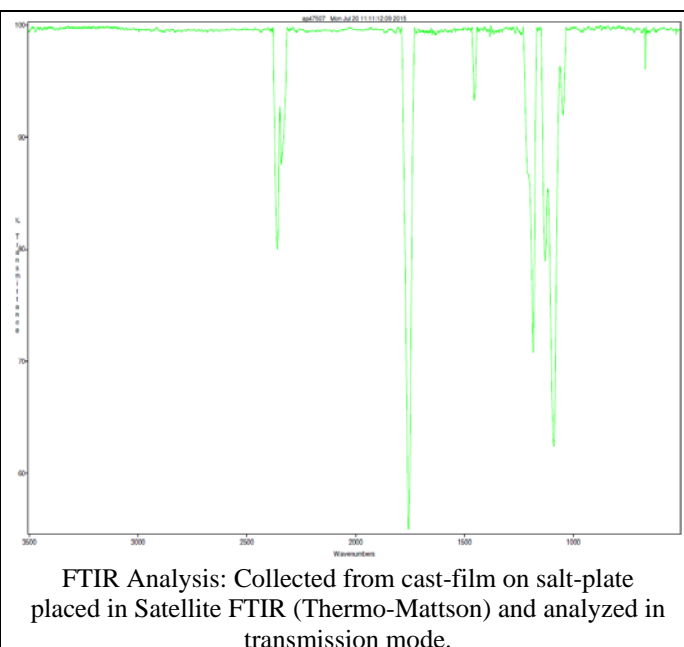
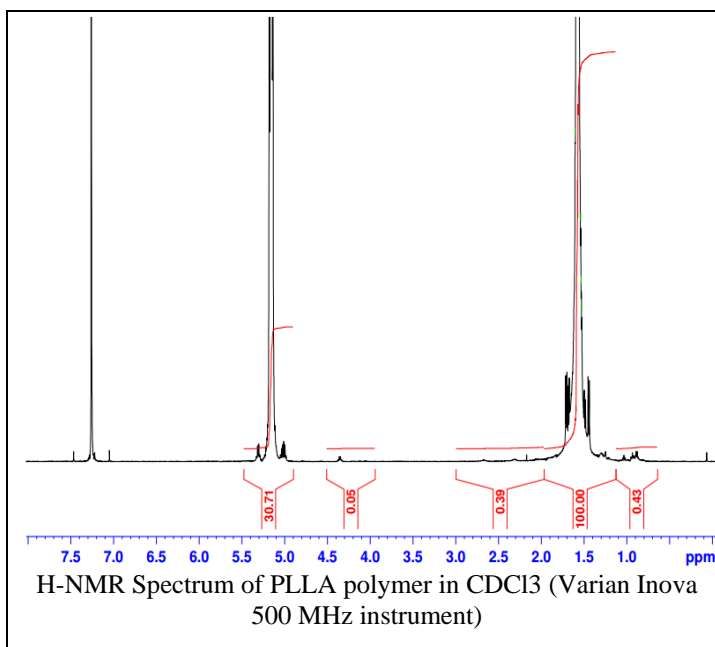
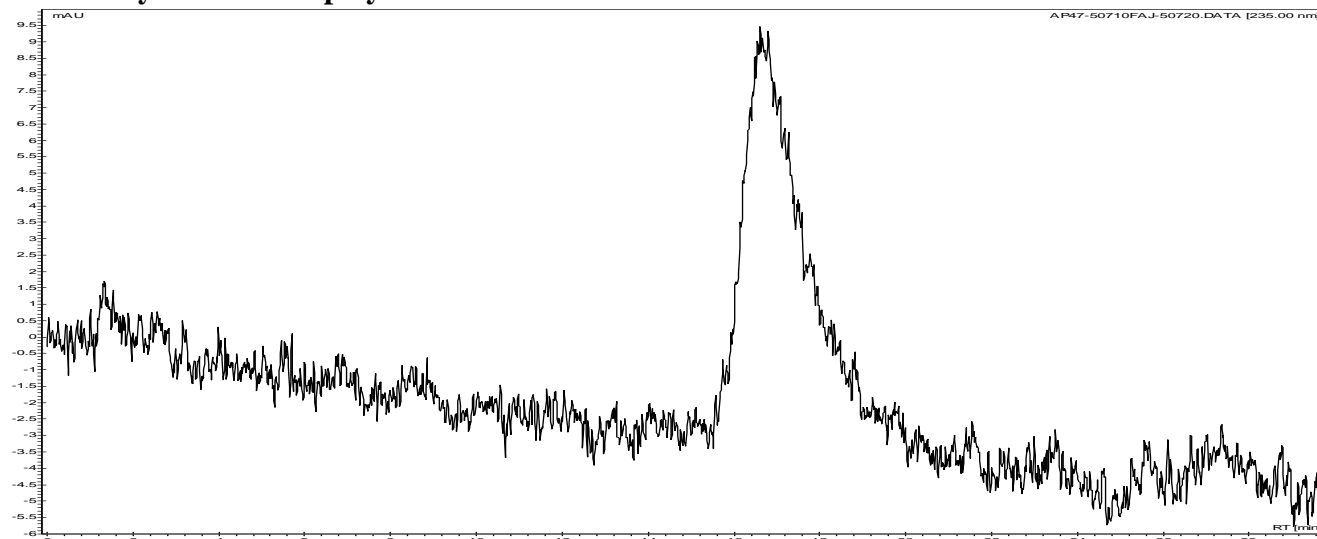


No. AP047 Certificate of Analysis

Product Name: Poly((L)Lactic acid) acid endcap (M_n : 45,000-55,000 Da) (Lot#: 50710FAJ)



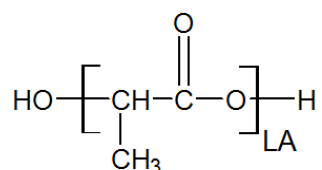
• GPC analysis of PLLA polymer



Analysis Method: Varian Prostar system with 1 ml/min DCM flow across two $5\mu m$ Phenogel columns and one PLGel Resipore column (Agilent). Detection via UV/Vis, calibrated against polystyrene standards.

Polymer	M_n (from GPC)	M_w (from GPC)	PDI
PLLA	53,316	91,260	1.71

• Structure of PLLA polymer



Material provided for research use only. Not for human use.