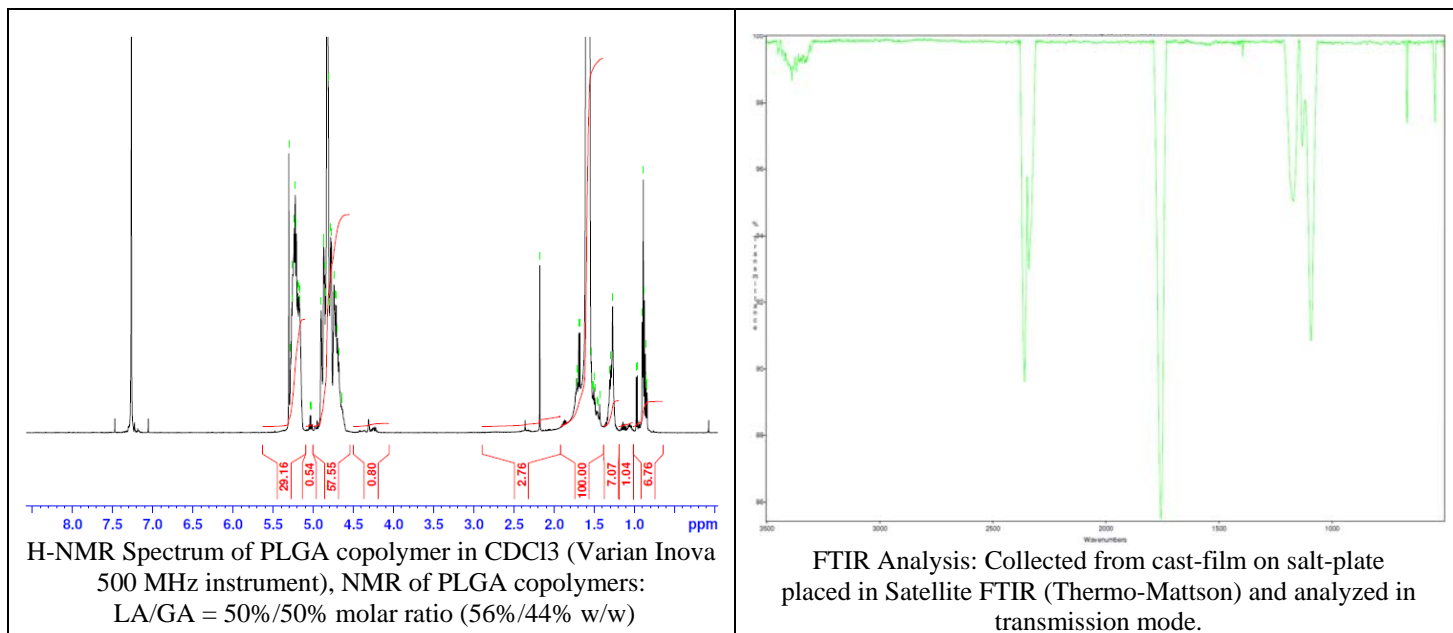


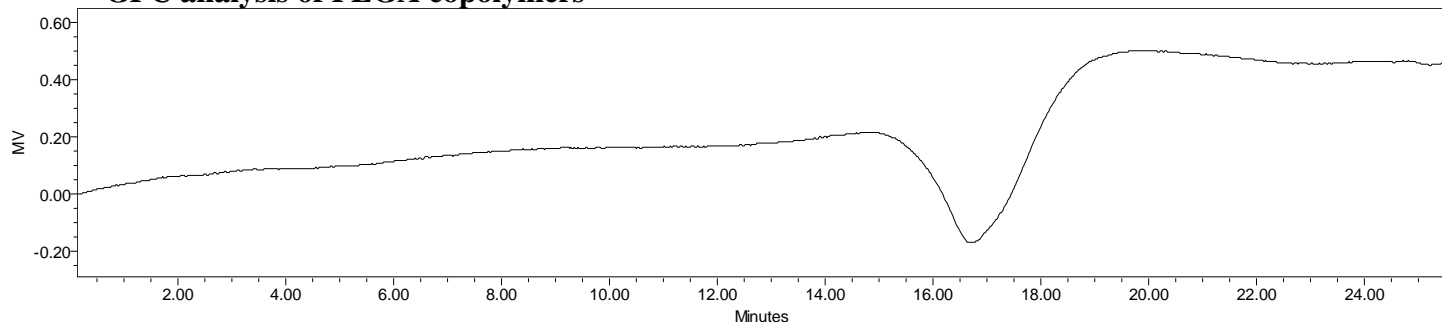
No. AP041

Certificate of Analysis

Product Name: Poly(lactide-co-glycolide) acid endcap (50:50 LA:GA) (Mn: 10,000-15,000 Da)
(Lot#: 60421MJK-A)



• GPC analysis of PLGA copolymers



Analysis Method: Waters Breeze 2 system with 1 ml/min DCM flow across two Phenogel 5 μm columns and one PLGel Resipore column (Agilent). Detection via UV/Vis, calibrated against polystyrene standards.

Polymer	Mn (from GPC)	Mw (from GPC)	PDI
PLGA	14,443	27,752	1.92

• Structure of PLGA copolymers

