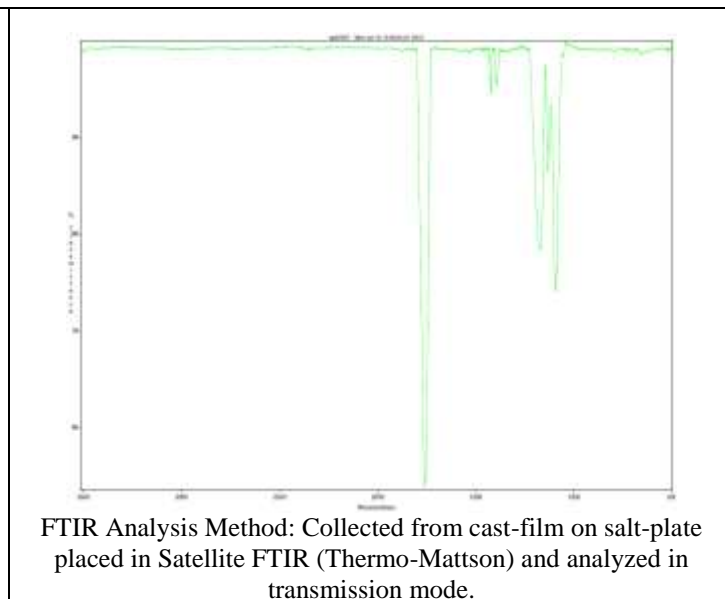
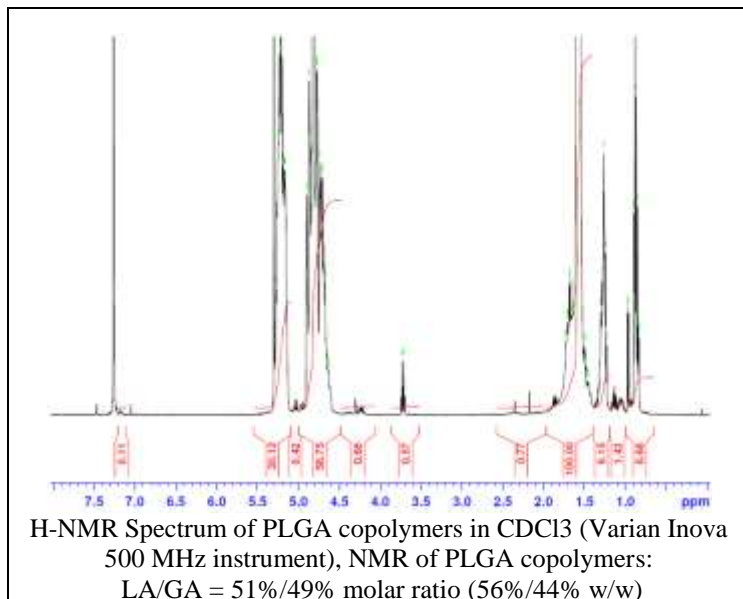


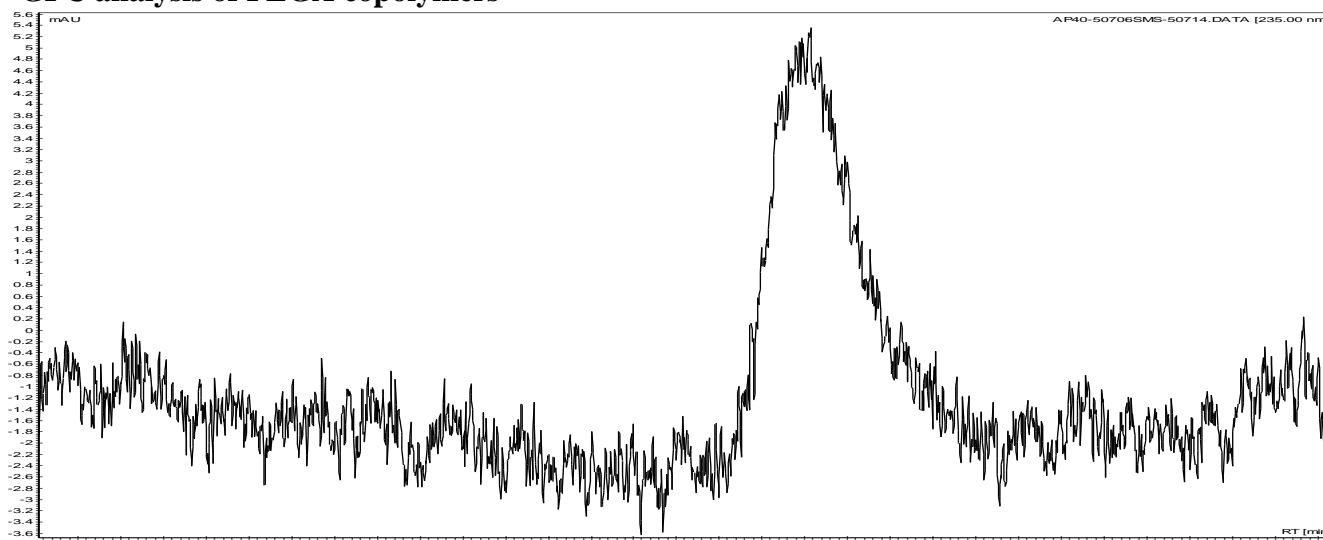
No. AP040

# Certificate of Analysis

Product Name: Poly(lactic-co-glycolic) acid endcap (50:50 LA:GA, Mn: 15,000-25,000 Da)  
(Lot#: 50706SMS) REV:A



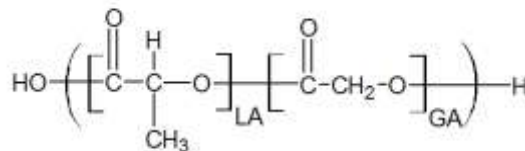
- **GPC analysis of PLGA copolymers**



Analysis Method: Varian Prostar system with 1 ml/min DCM flow across two Phenogel 5 μm columns and one PLgel Resipore column (Agilent). Detection via UV/Vis, calibrated against polystyrene standards.

Polymer	Mn (from GPC)	Mw (from GPC)	PDI
PLGA	24,493	50,245	2.05

- **Structure of PLGA copolymers**



Material provided for research use only. Not for human use.