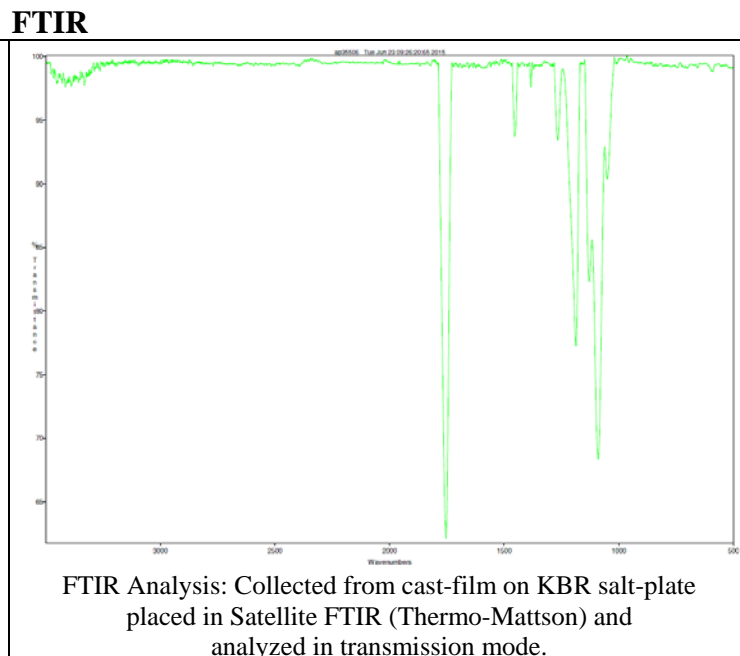
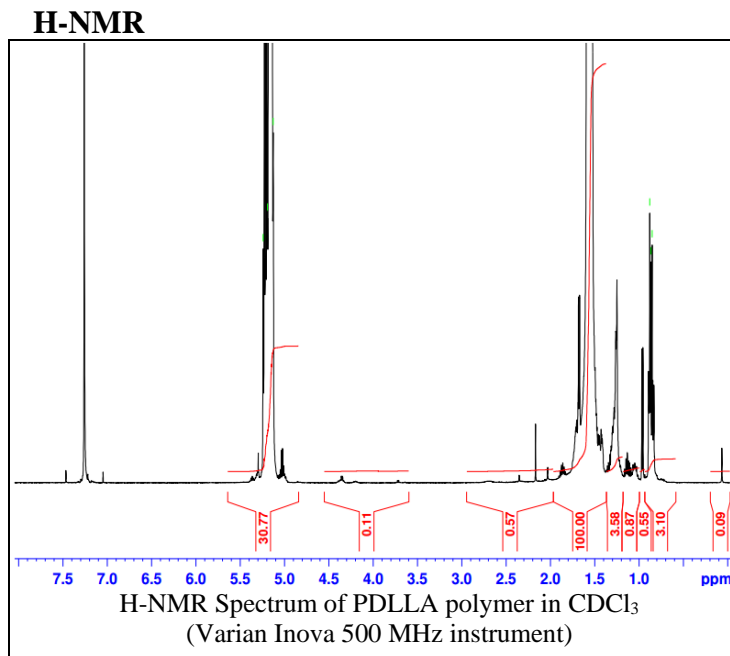


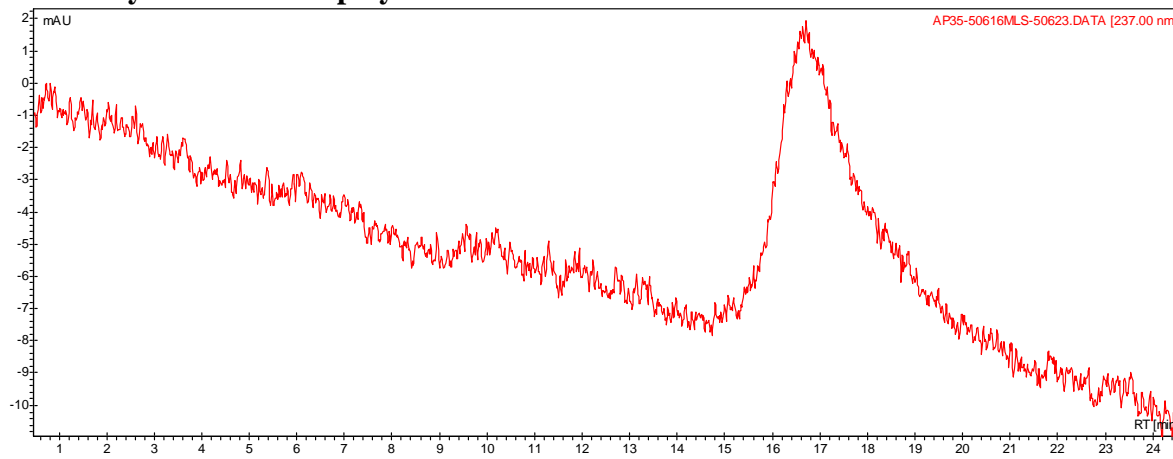
No. AP035

Certificate of Analysis

Product Name: Poly(D,L-lactide) acid endcap (M_n 55,000-65,000 Da)
(Lot# 50616MLS)



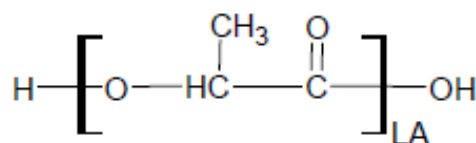
- **GPC analysis of PDLLA polymer**



Analysis Method: Varian Prostar system with 1 ml/min DCM flow across two $5\mu m$ Phenogel columns and one Resipore column (Agilent). Detection via UV/Vis, calibrated against polystyrene standards.

Polymer	M_n (from GPC)	M_w (from GPC)	PDI
PDLLA	59,417	108,666	1.83

- **Structure of PDLLA polymer**



Material provided for research use only. Not for human use.