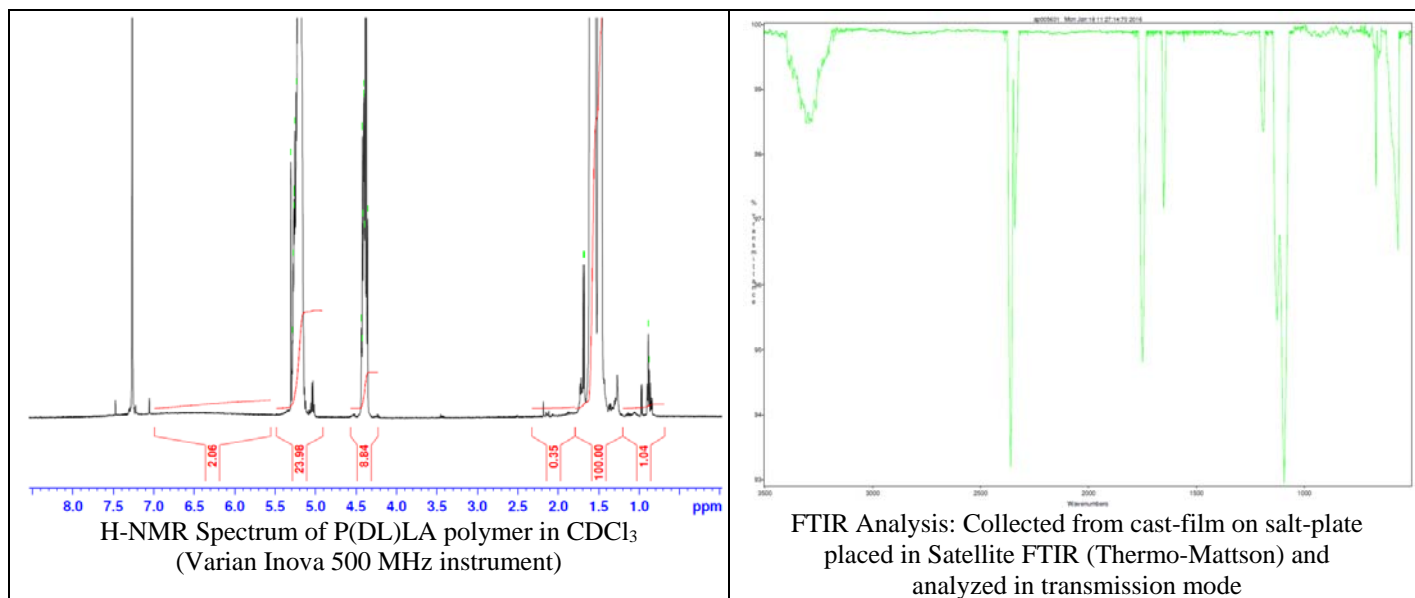


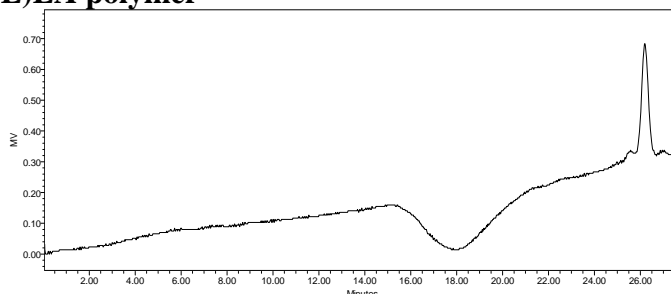
No. AP005

Certificate of Analysis

Product Name: Poly(DL-lactide) acid endcap (M_n : 1,000-5,000 Da) (Lot#: 60112JSG-A)



- **GPC analysis of P(DL)LA polymer**



Analysis Method: Waters Breeze 2 system with 1 ml/min DCM flow across three Phenogel 5 μ m columns. Detection via RI, calibrated against polystyrene standards.

Polymer	M_n (from GPC)	M_w (from GPC)	PDI
P(DL)LA	1250	3523	2.82

- **Structure of P(D)LA polymer**

