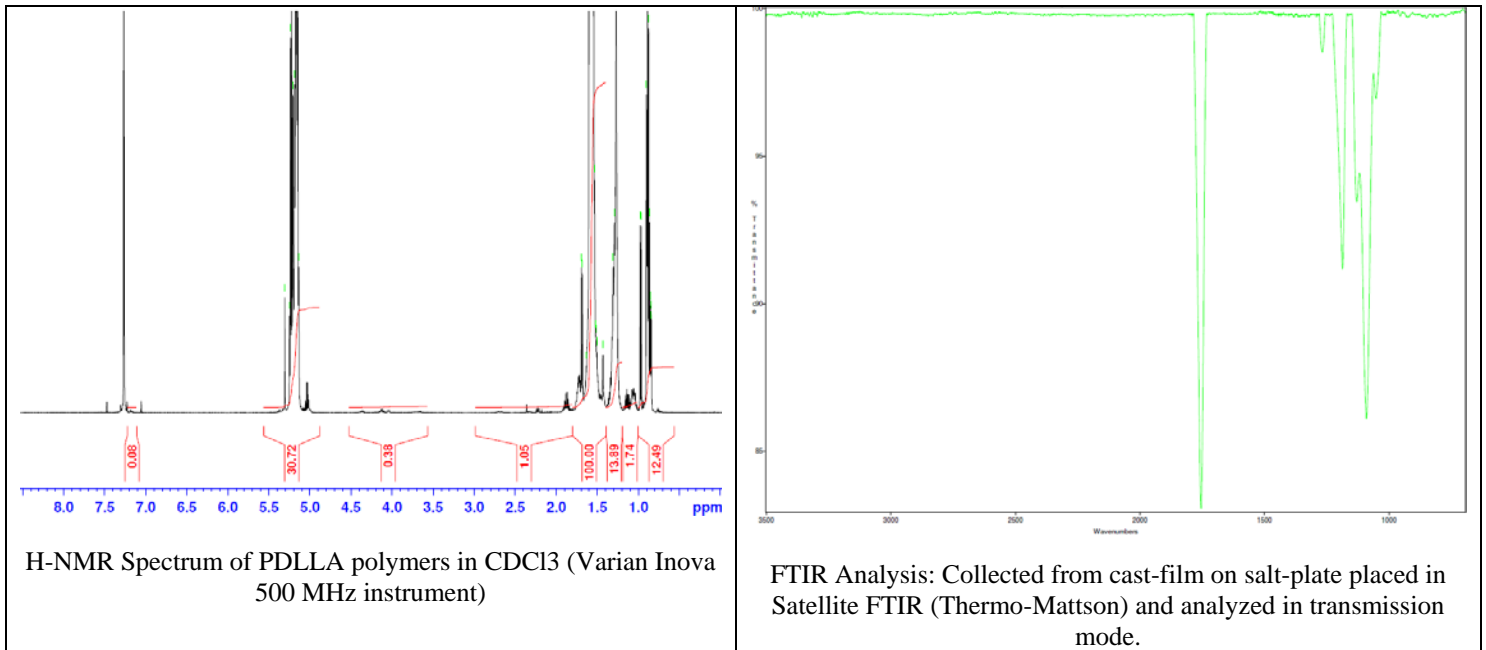
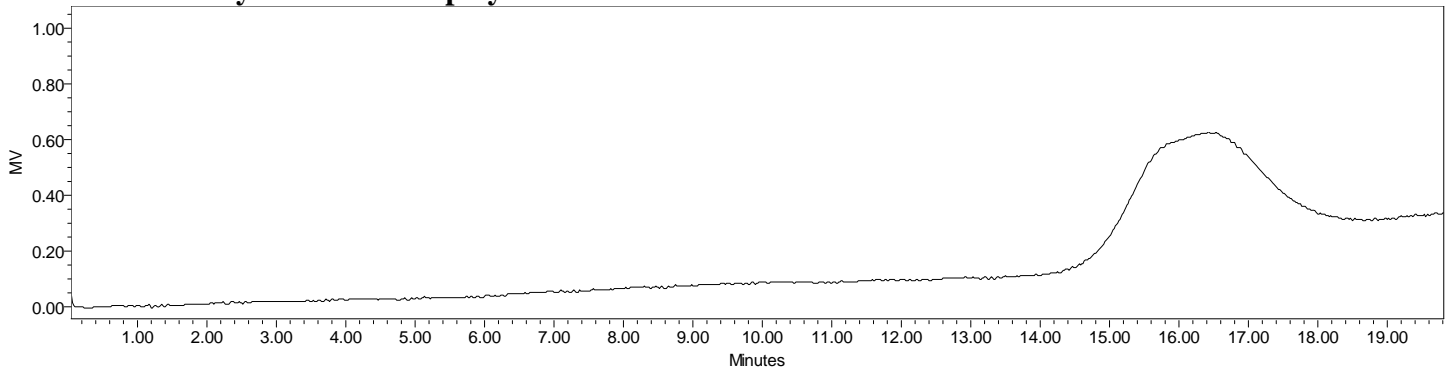


No. AP004 Certificate of Analysis

Product Name: Poly(DL-lactide) ester endcapped (Mn: 65,000-75,000 Da) (Lot#: 60122ELH-A)



- GPC analysis of PDLLA polymers



Analysis Method: Varian Prostar system with 1 ml/min DCM flow across two Phenogel 5 μ m columns and one PLgel Resipore column (Agilent). Detection via UV/Vis, calibrated against polystyrene standards.

Polymer	Mn (from GPC)	Mw (from GPC)	PDI
PDLLA	70,177	137,118	1.95

- Structure of PDLLA polymers

