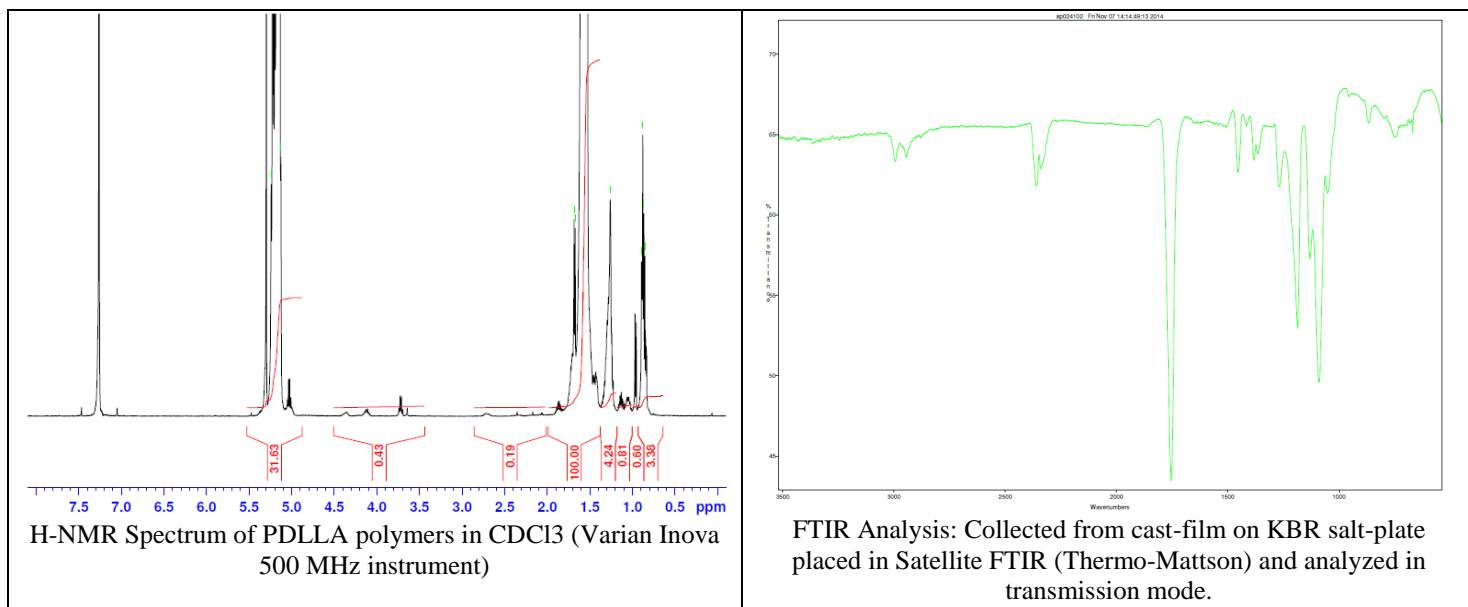
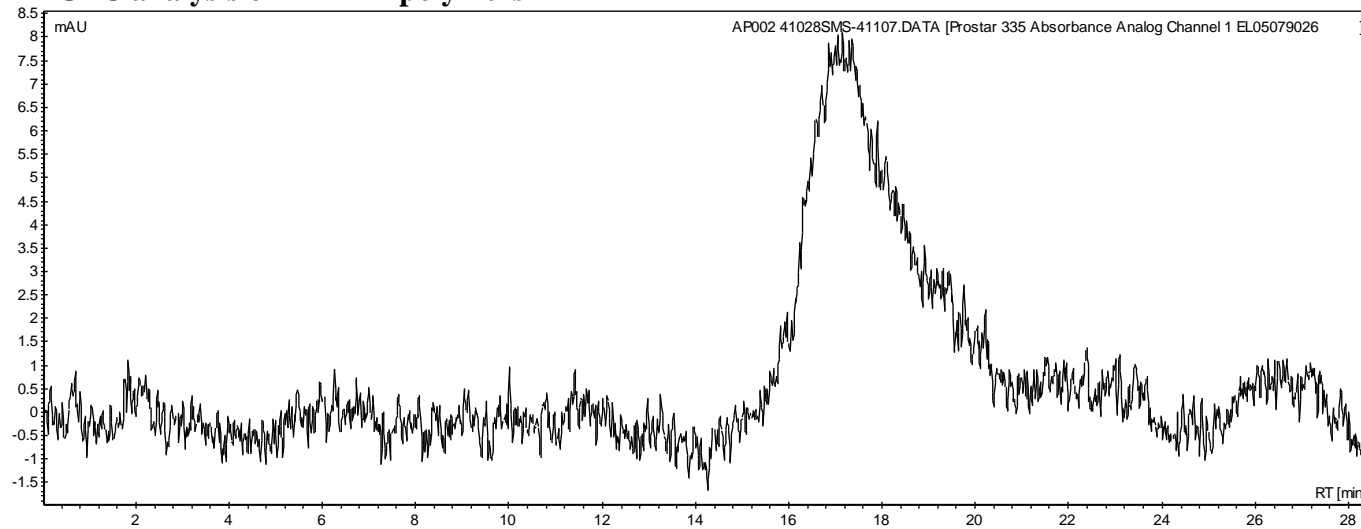


No. AP002 Certificate of Analysis

Product Name: Poly(DL-lactic acid) ester endcapped (Mn: 25,000-35,000 Da) (Lot#: 41028SMS)



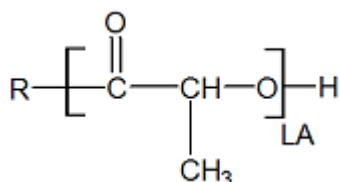
• GPC analysis of PDLLA polymers



Analysis Method: Varian Prostar system with 1 ml/min DCM flow across two 5 μ m Phenogel columns and one Resipore column (Agilent). Detection via UV/Vis, calibrated against polystyrene standards.

Polymer	Mn (from GPC)	Mw (from GPC)	PDI
PDLLA	34,014	78,819	2.32

• Structure of PDLLA polymers



Material provided for research use only. Not for human use.