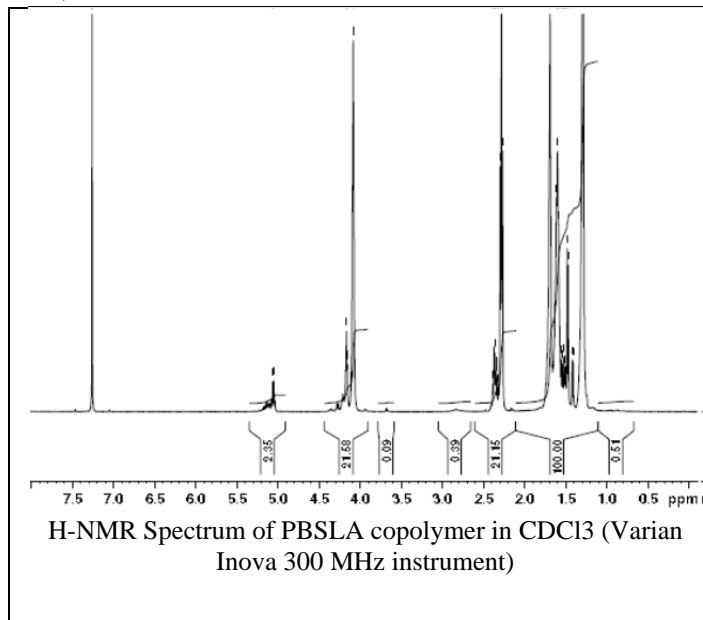


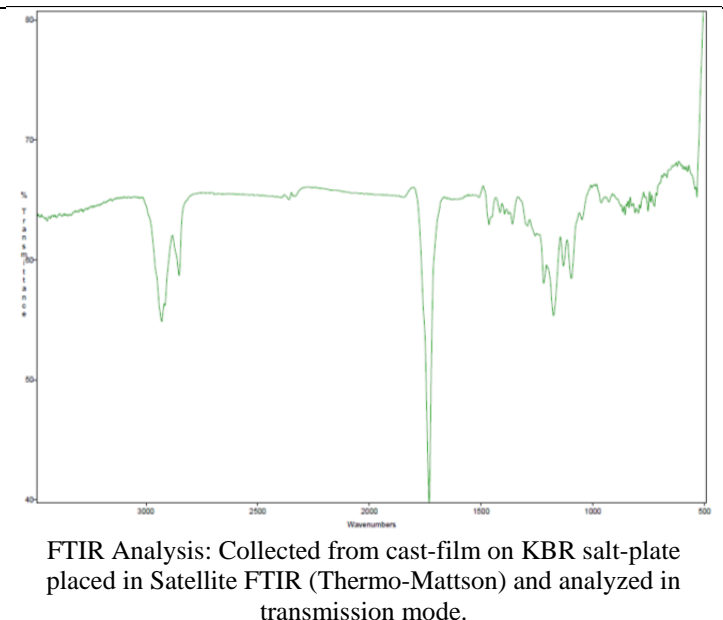
# No. AO36 Certificate of Analysis

Product Name: Poly(butylene-succinate-co-L-lactide) (Mn 5000-10,000) (PBSLA) (nominal mass ratio succinate:butylene:lactide: 54:26:20) (Lot# 30728JSG)

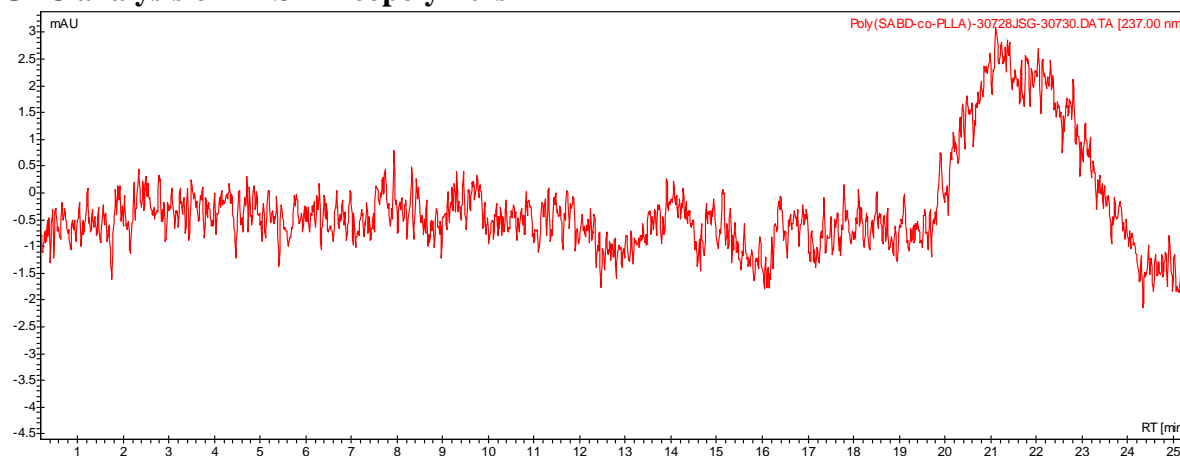
## H-NMR



## FTIR



### • GPC analysis of PBSLA copolymers



Analysis Method: Varian Prostar system with 1 ml/min DCM flow across two Phenogel 5u columns and one Resipore column (Agilent). Detection via UV/Vis, calibrated against polystyrene standards

Polymer	Mn (from GPC)	Mw (from GPC)	PDI
PBSLA	7400	12353	1.67

### • Structure of PBSLA copolymers

