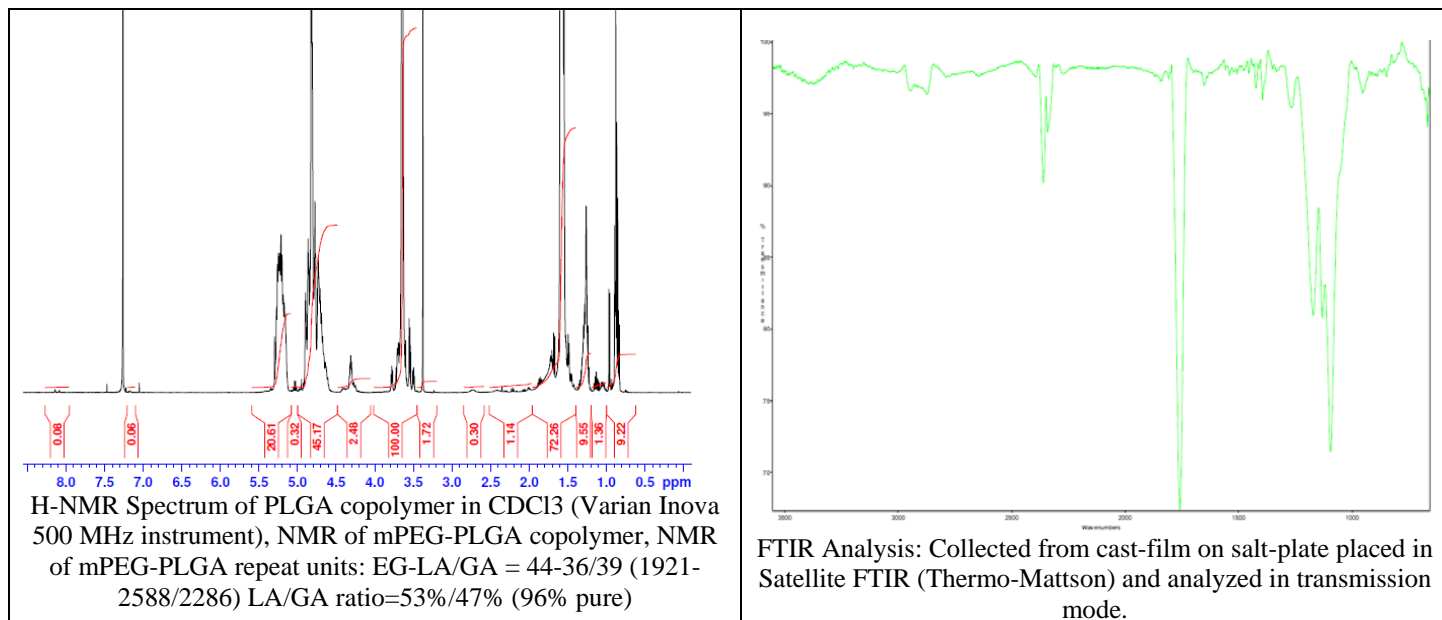


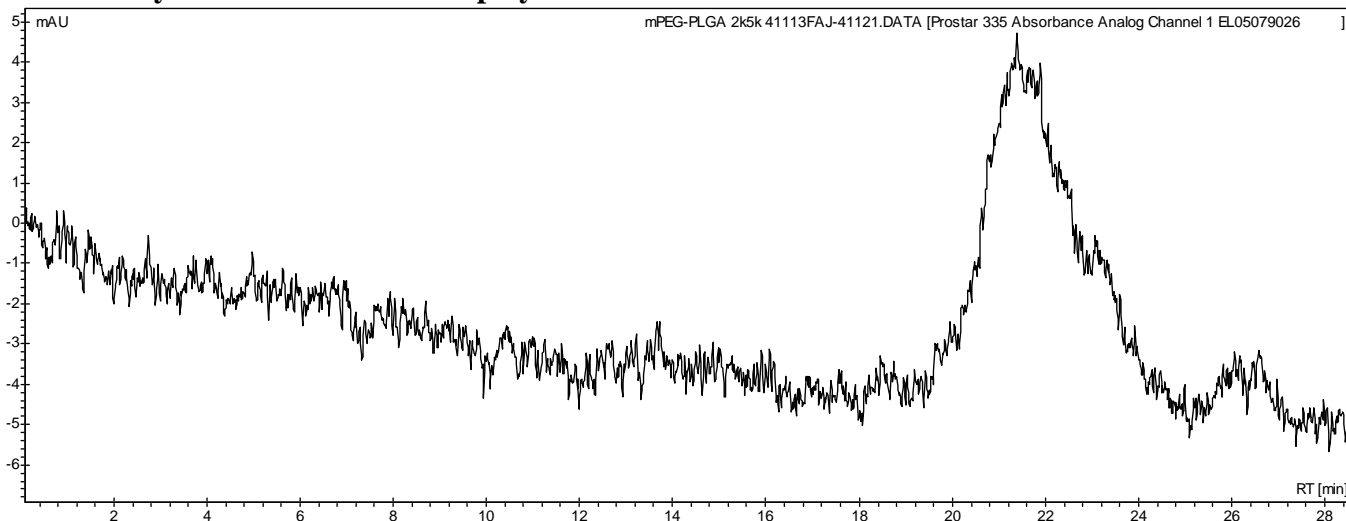
No. AK90

Certificate of Analysis

Product Name: Methoxy Poly(ethylene glycol)-b-Poly(lactide-co-glycolide) (2,000:5,000 Da, 50:50 LA:GA) (Lot#: 41113FAJ)



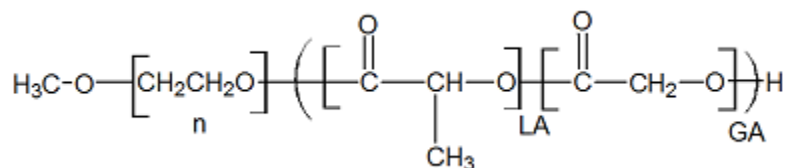
- GPC analysis of mPEG-PLGA copolymer**



Analysis Method: Varian Prostar system with 1 ml/min DCM flow across two Phenogel 5 μ m columns and one Resipore column (Agilent). Detection via UV/Vis, calibrated against polystyrene standards.

Polymer	Mn (from GPC)	Mw (from GPC)	PDI
mPEG-PLGA	5,592	9,041	1.62
mPEG precursor	2,326	2,428	1.04

- Structure of mPEG-PLGA copolymer**



Material provided for research use only. Not for human use.