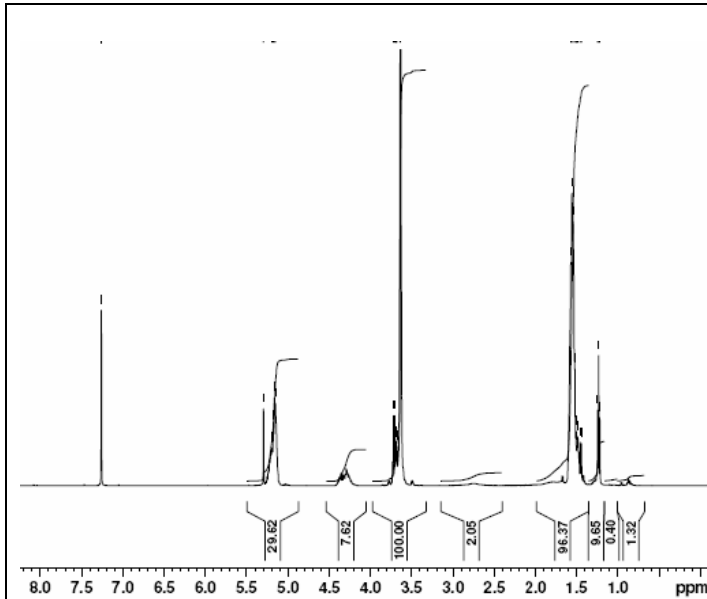
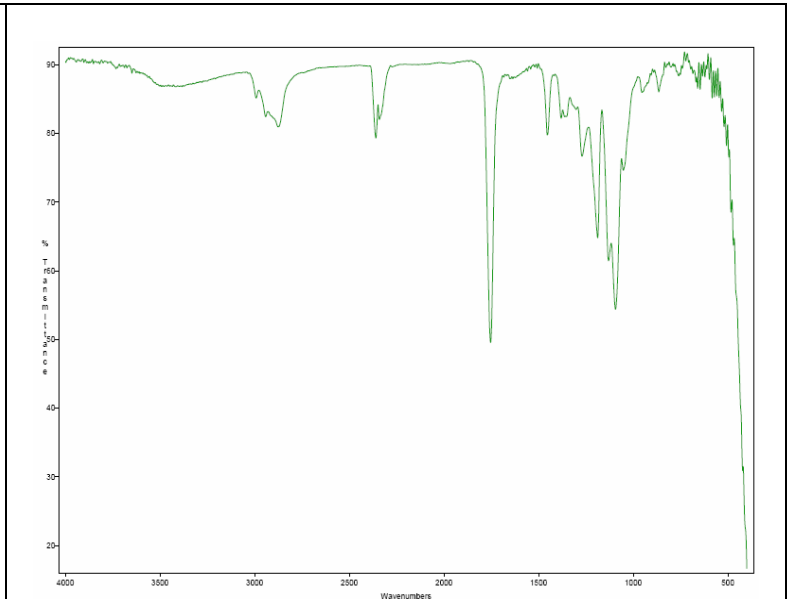


No. AK46 Certificate of Analysis

Product Name: Poly(DL-lactide)-*b*-Poly(ethylene glycol)-*b*-Poly(DL-lactide) triblock copolymers (1,000:1,000:1,000) (Lot#: 30213JSG)

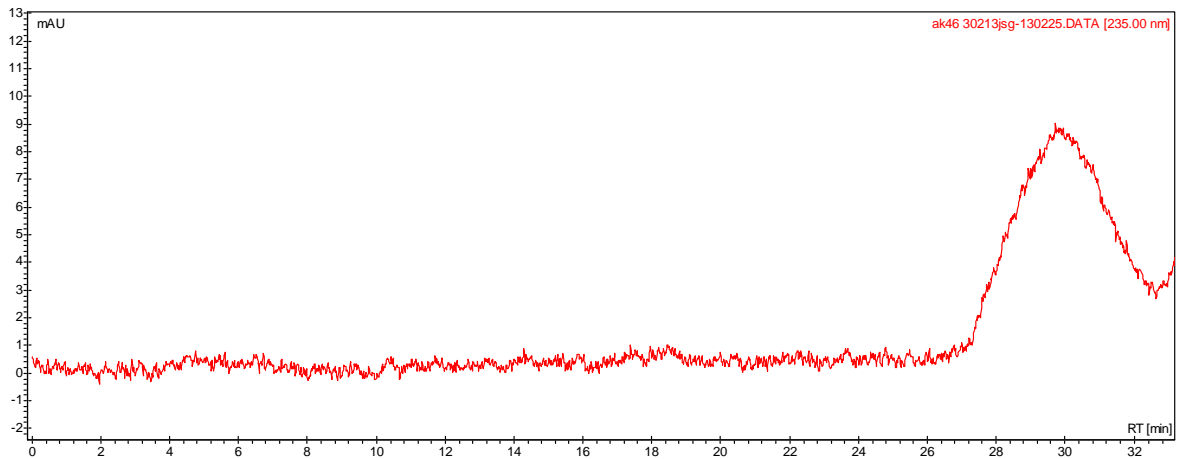


H-NMR Spectrum of PLA-PEG-PLA copolymers in CDCl₃ (Varian Inova 500 MHz instrument), NMR of PLA-PEG-PLA repeat units: EG-LA = 26-31



FTIR Analysis: Collected from cast-film on KBR salt-plate placed in Satellite FTIR (Thermo-Mattson) and analyzed in transmission mode.

- GPC analysis of PLA-PEG-PLA copolymers**



Analysis Method: Varian Prostar system with 1 ml/min DCM flow across four Phenogel 5u columns (Agilent). Detection via UV/Vis, calibrated against polystyrene standards (*PEG standards).

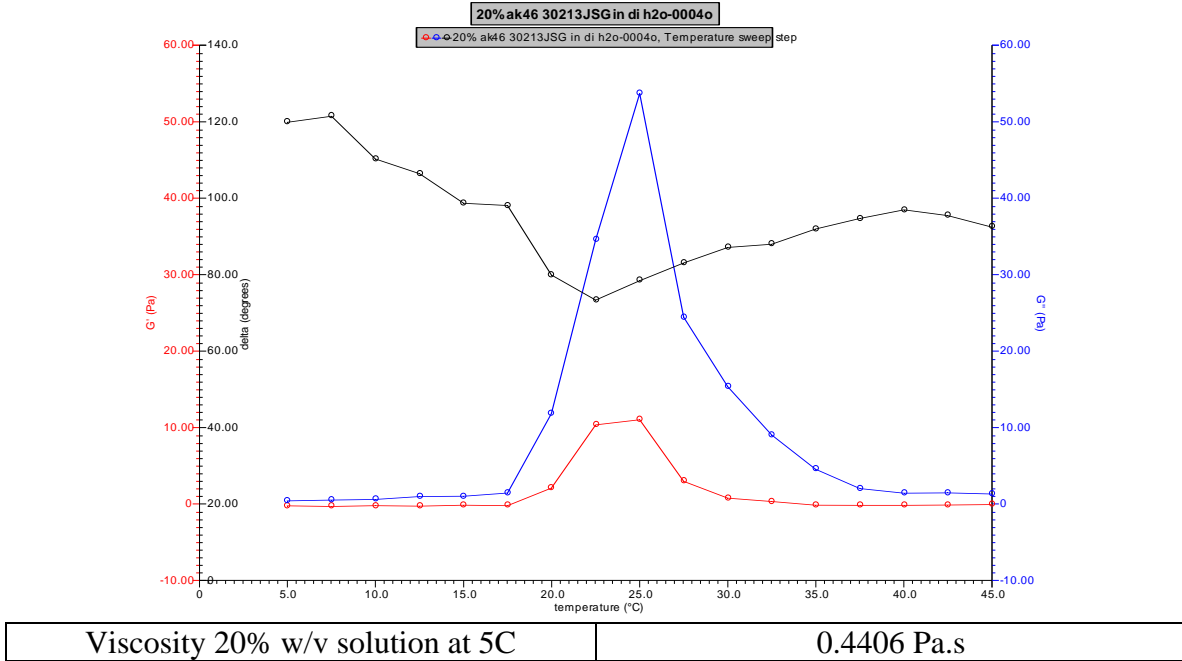
Polymer	Mn (from GPC)	Mw (from GPC)	PDI
PLA-PEG-PLA	3952	4927	1.25
PEG1000 Initiator	970*	-	-

*-per MFG provided information

- Rheology analysis of PLA-PEG-PLA copolymers**

Rheology performed on AR550 (TA instruments) with 60mm 2degree cone on 20% w/v polymer in distilled water dissolved over 2 days with shaking at 4C. Viscosity of solution at 0.1 (sec-1) and 5C was measured (1minute peak hold 5 second test intervals). Rheology performed by oscillating at constant 6.283 rad/s, 0.1% strain, in increments of 2.5C ranging from 5-45C with 3 minutes of temperature equilibration at each point.

Rheology Chart



- Structure of PLA-PEG-PLA copolymers**

