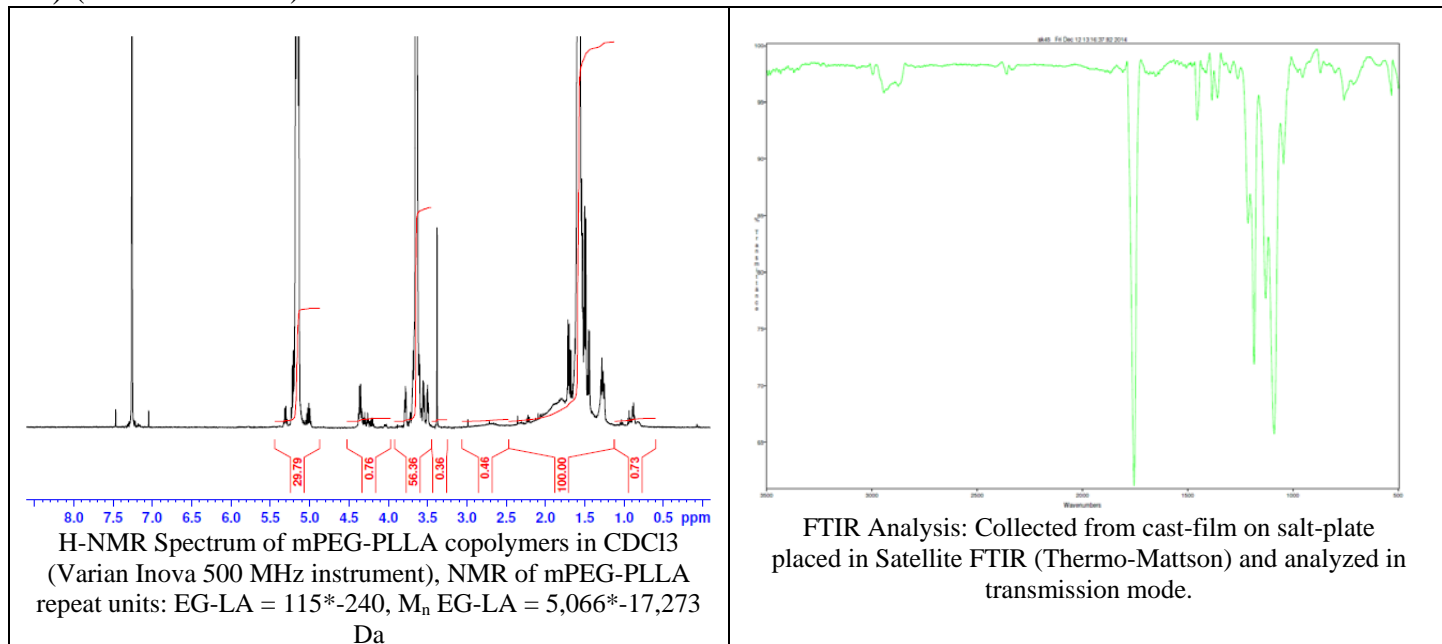
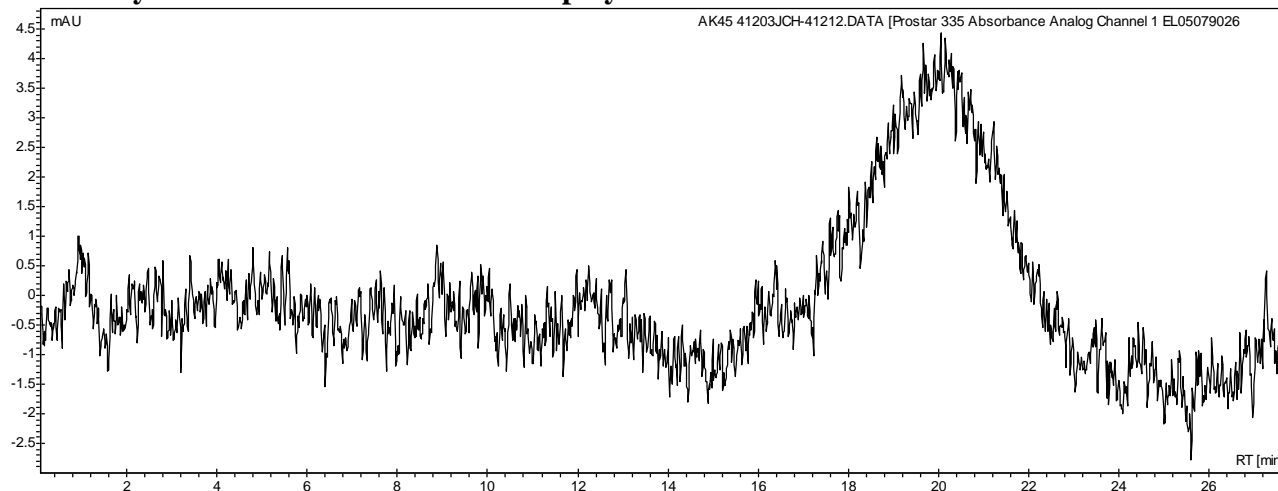


No. AK45 Certificate of Analysis

Product Name: Methoxy Poly(ethylene glycol)-b-Poly(L-lactic acid) copolymers (5,000:16,000 Da) (Lot# 41203JCH)



- GPC analysis of mPEG-PLLA diblock copolymers**

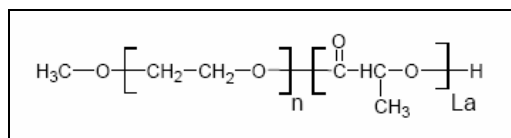


Analysis Method: Varian Prostar system with 1 ml/min DCM flow across two Phenogel 5 μm columns and one Resipore column (Agilent). Detection via UV/Vis, calibrated against polystyrene standards.

Polymer	M _n (from GPC)	M _w (from GPC)	PDI
mPEG-PLLA	15,606	35,737	2.29
mPEG precursor*	5,488	5,847	1.06

*Run separately, chromatograph not shown

- Structure of mPEG-PLLA diblock copolymers**



Material provided for research use only. Not for human use.