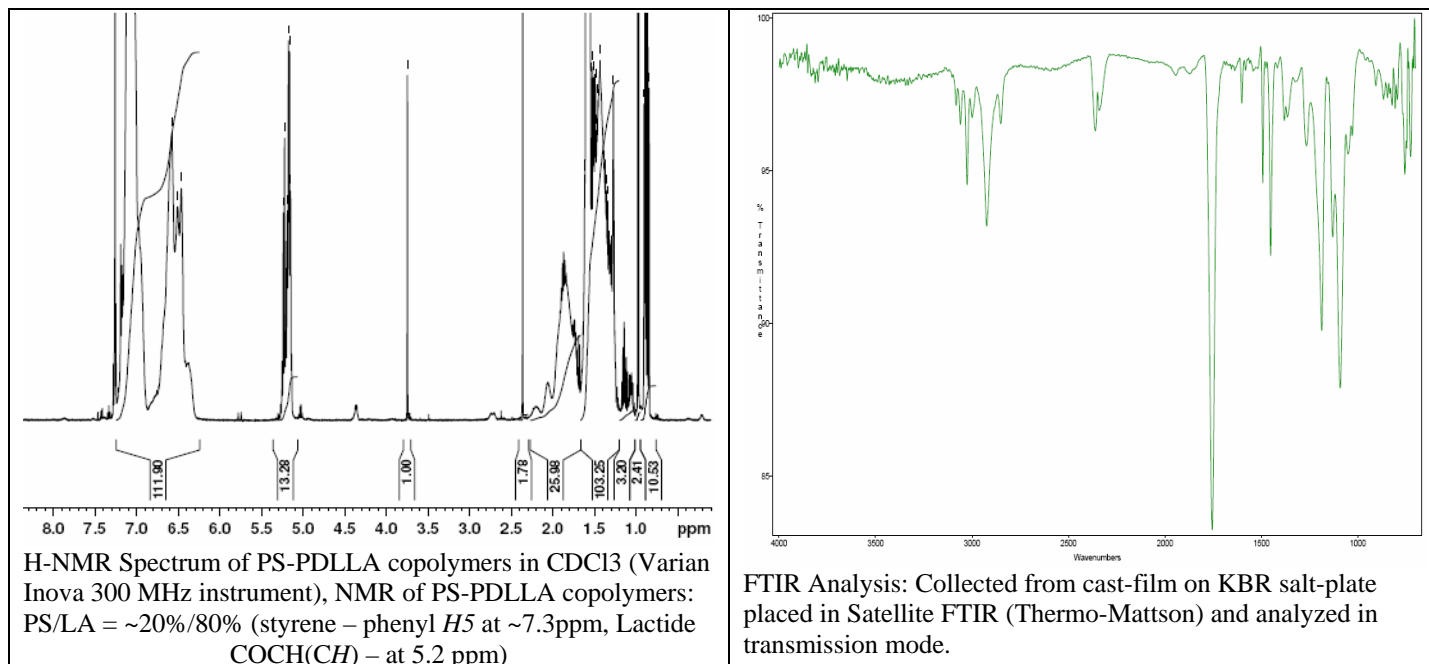
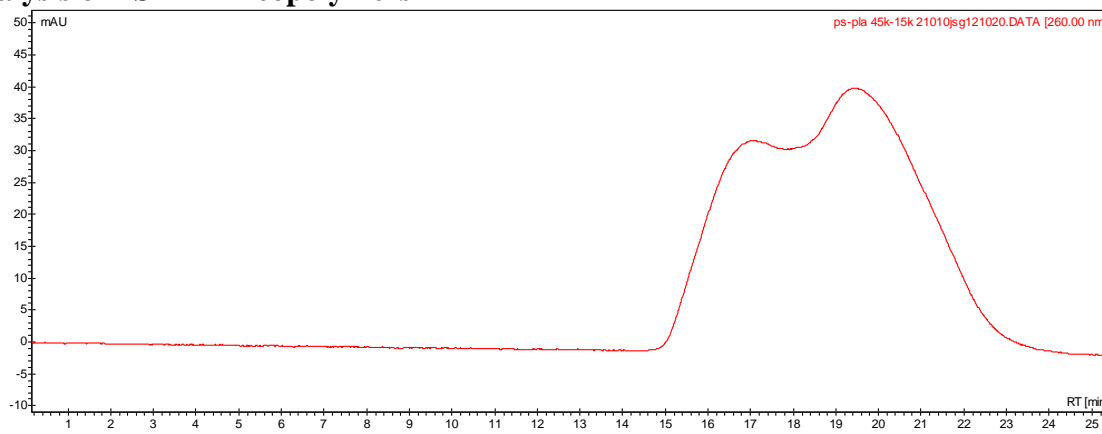


No. AK42 Certificate of Analysis

Product Name: Poly(styrene)-b-Poly(DL-Lactide) copolymers (~45,000:15,000 Da) (Lot#: 21009JSG)



• GPC analysis of PS-PLLA copolymers



Analysis Method: Varian Prostar system with 1 ml/min DCM flow across one PLGel Mixed-D column and one PLGel Mixed-E column and one phenogel 5u column (Agilent). Detection via UV/Vis, calibrated against polystyrene standards.

Polymer	Mn (from GPC)	Mw (from GPC)	PDI
PS-PDLLA	25339	66313	2.62

• Structure of PS-PDLLA copolymers

