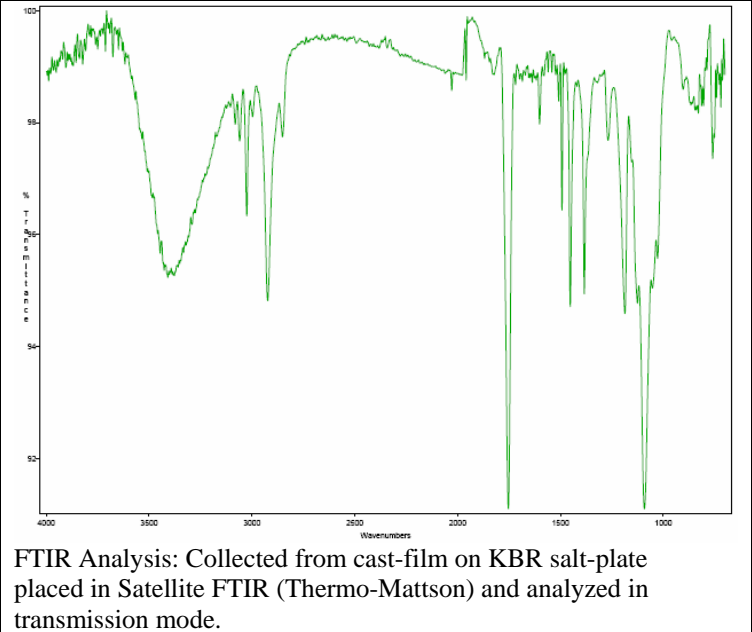
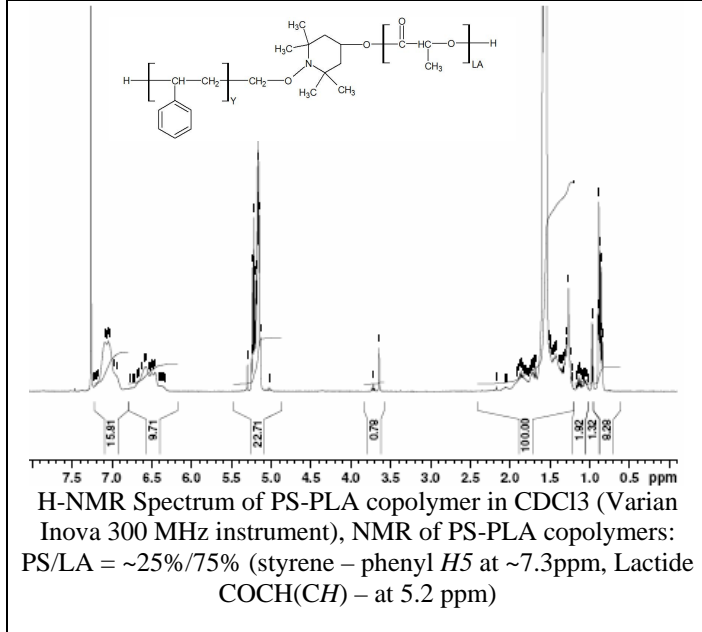


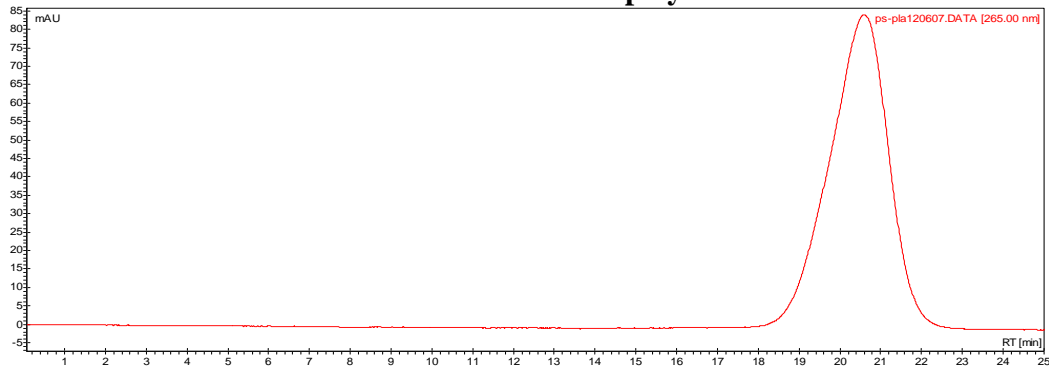
No. AK34

# Certificate of Analysis

Product Name: Poly(styrene)-b-Poly(DL-Lactide) copolymers (~5000-5000Da) Rev-A: Structure



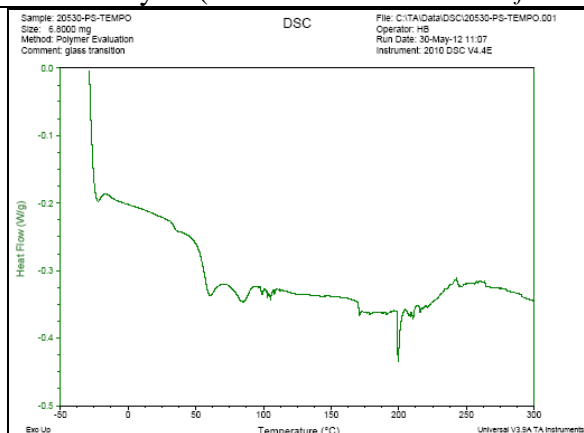
- GPC analysis of PS-TEMPO-OH initiator and PS-PLA copolymers**



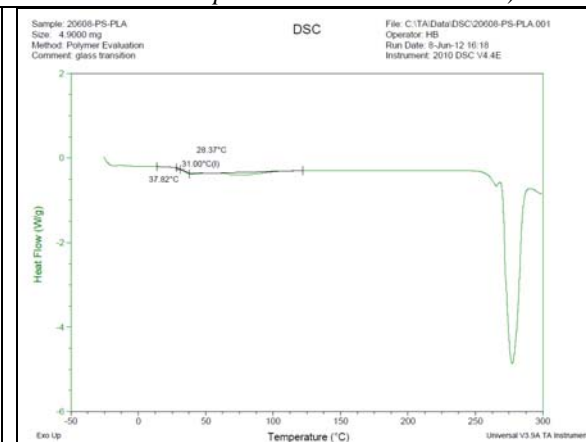
Analysis Method: Varian Prostar system with 1 ml/min DCM flow across two PLgel mixed-D columns and one Mixed-E column (Agilent). Detection via UV/Vis, calibrated against polystyrene standards

Polymer	Mn (from GPC)	Mw (from GPC)	PDI
PS-TEMPO-OH initiator	5735	6815	1.19
PS-PLA	7701	8925	1.16

DSC Analysis (chilled to ~-30C via acetone filled cold-cup then ran at 10C/min up to 300C on DSC TA 2010)



PS-TEMPO-OH Initiator



PS-PLA finished product-Tg – 31.0C