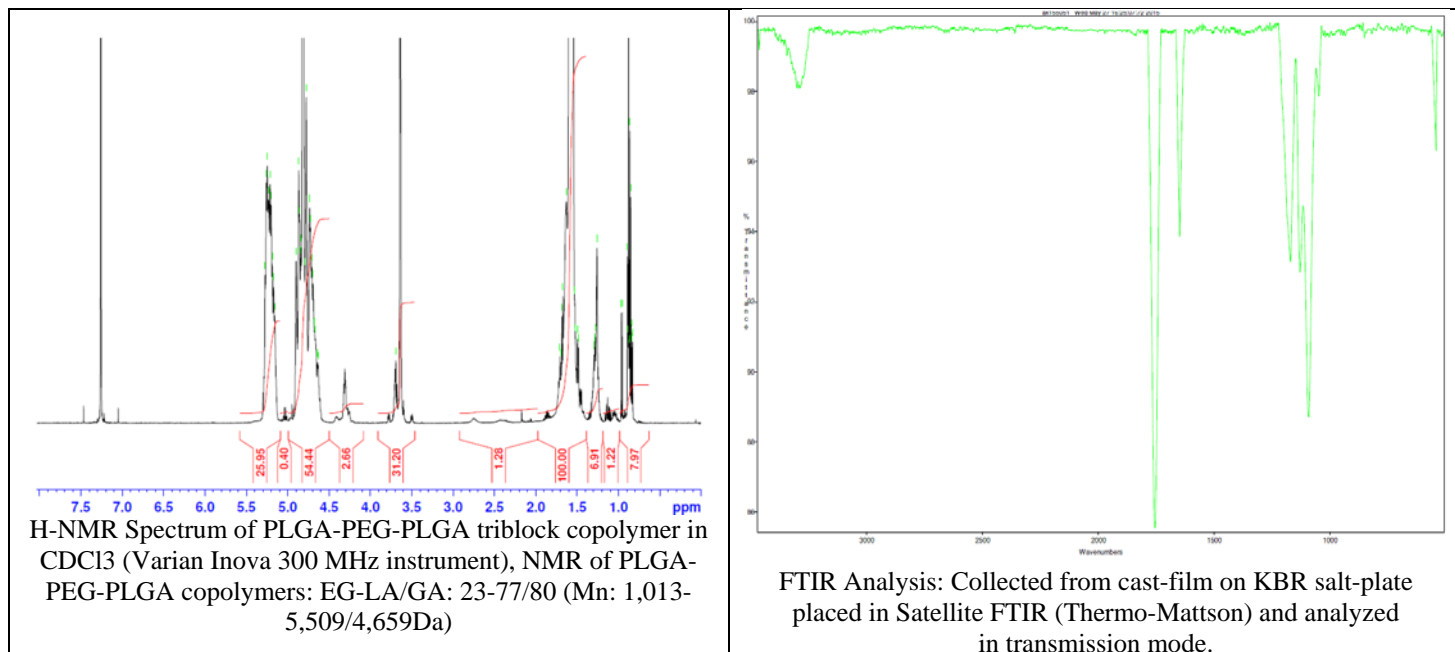


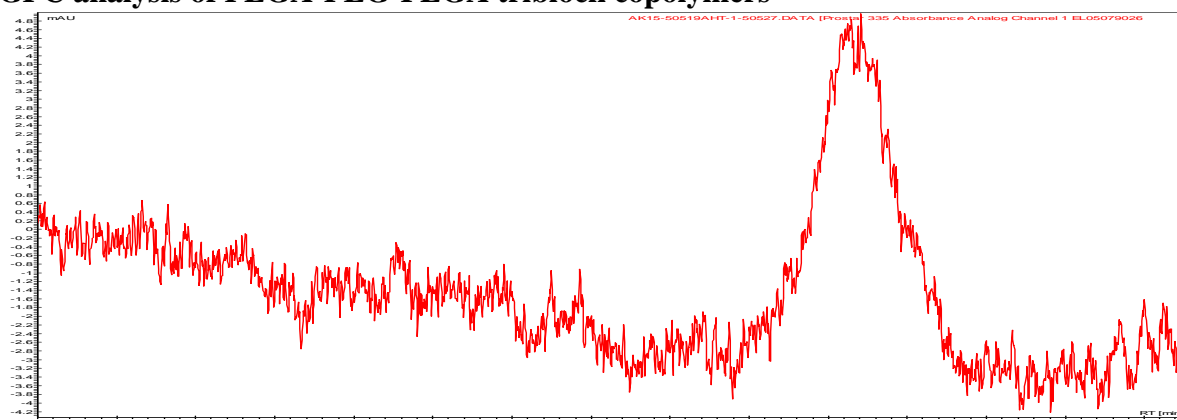
No. AK015

Certificate of Analysis

Product Name: Poly(lactic-co-glycolic acid)-*b*-Poly(ethylene glycol)-*b*-Poly(lactic-co-glycolic acid) copolymers (5000-1000-5000 Da) (Lot# 50519AHT) (REV:A NMR Data)



- **GPC analysis of PLGA-PEG-PLGA triblock copolymers**



Analysis Method: Varian Prostar system with 1 ml/min DCM flow across Phenogel 5 μ m columns and one Resipore column (Agilent). Detection via UV/Vis, calibrated against polystyrene standards

Polymer	M _n (from GPC)	M _w (from GPC)	PDI
PLGA-PEG-PLGA	11,520	21,769	1.89
PEG Precursor	M _n =1011, M _w =1020, PDI=1.01* (MFG)		

*- from MFG data

- **Structure of PLGA-PEG-PLGA triblock copolymers**

