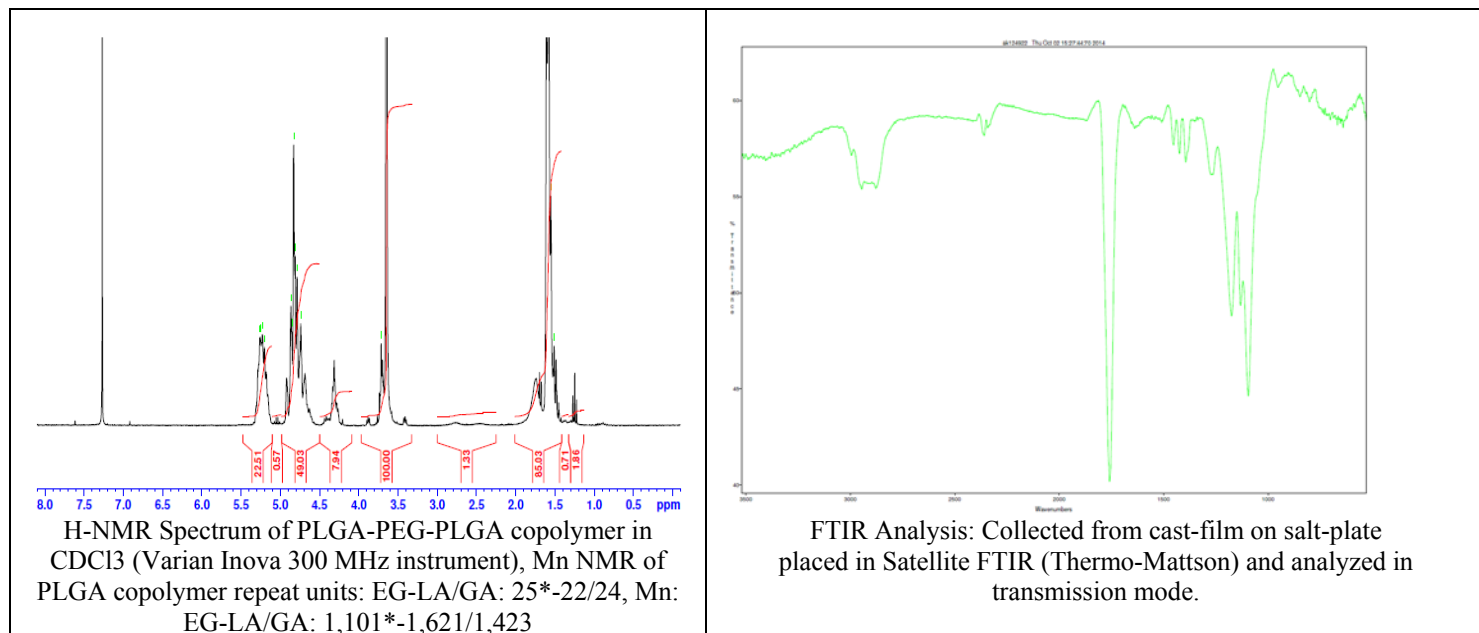
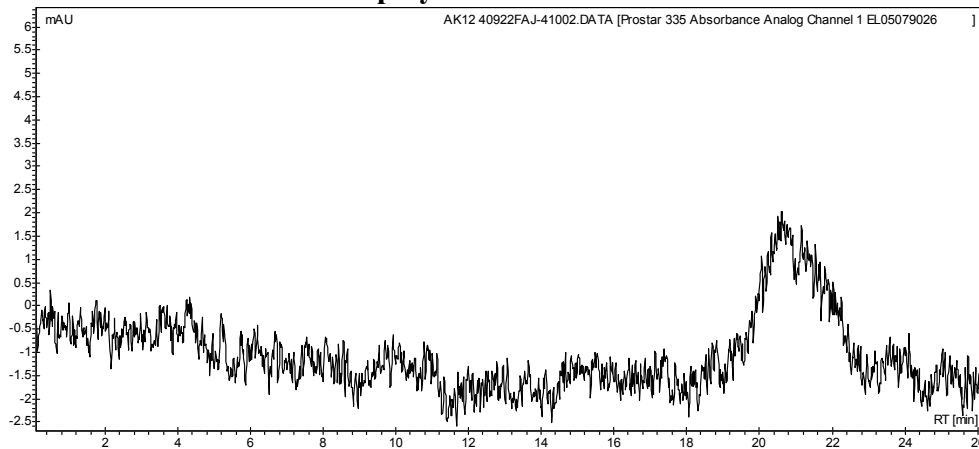


# No. AK11 Certificate of Analysis

Product Name: Poly(lactic-co-glycolic acid)-*b*-Poly(ethylene glycol)-*b*-Poly(lactic-co-glycolic acid) copolymers,  $M_n$ : 1,600:1,000:1,600 Da Lot# 40922FAJ



- **GPC analysis of PLGA-PEG-PLGA copolymer**

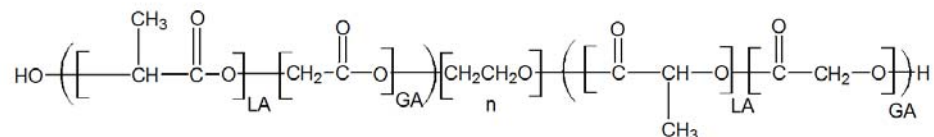


Analysis Method: Varian Prostar system with 1 ml/min DCM flow across two phenogel 5 $\mu$ m columns and one Resipore column (Agilent). Detection via UV/Vis, calibrated against polystyrene standards.

Polymer	$M_n$ (GPC)	$M_w$ (GPC)	PDI
PLGA-PEG-PLGA	6,087	8,197	1.35
PEG Precursor*	1,118	1,142	1.02

\*-calibrated against PEG standards

- **Structure of PLGA-PEG-PLGA copolymer**



Material provided for research use only. Not for human use.