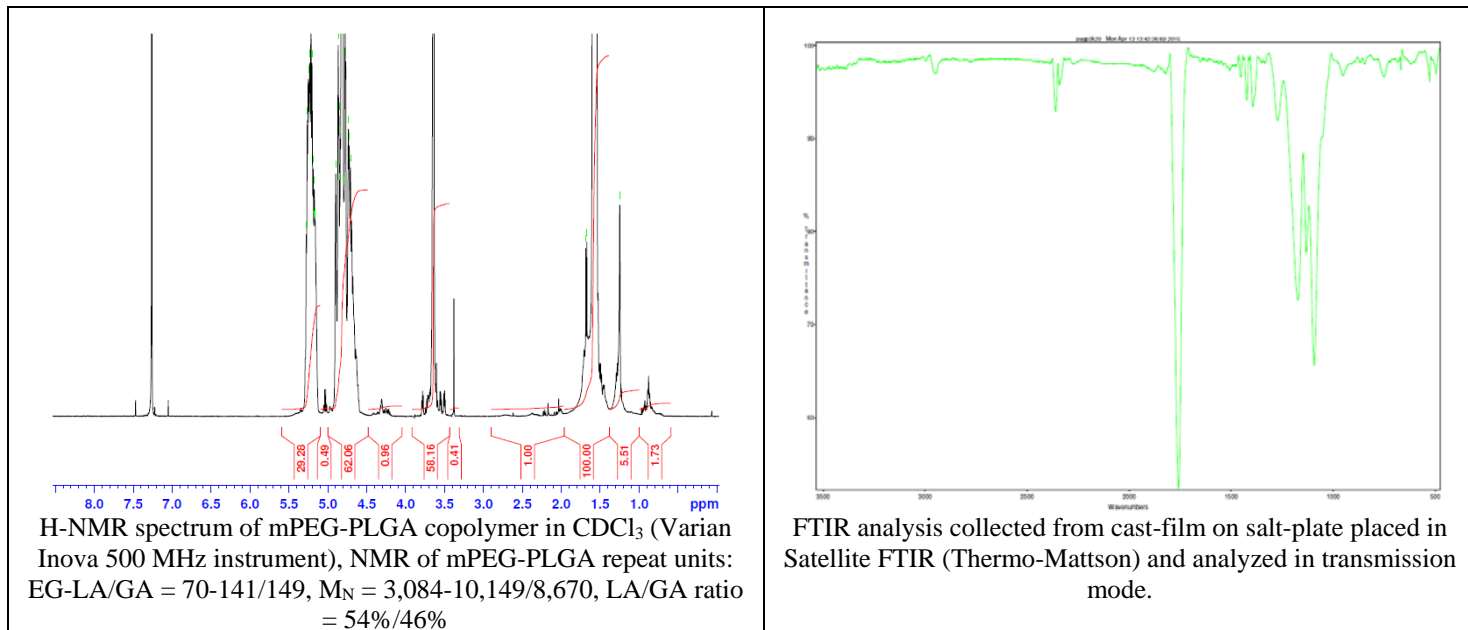
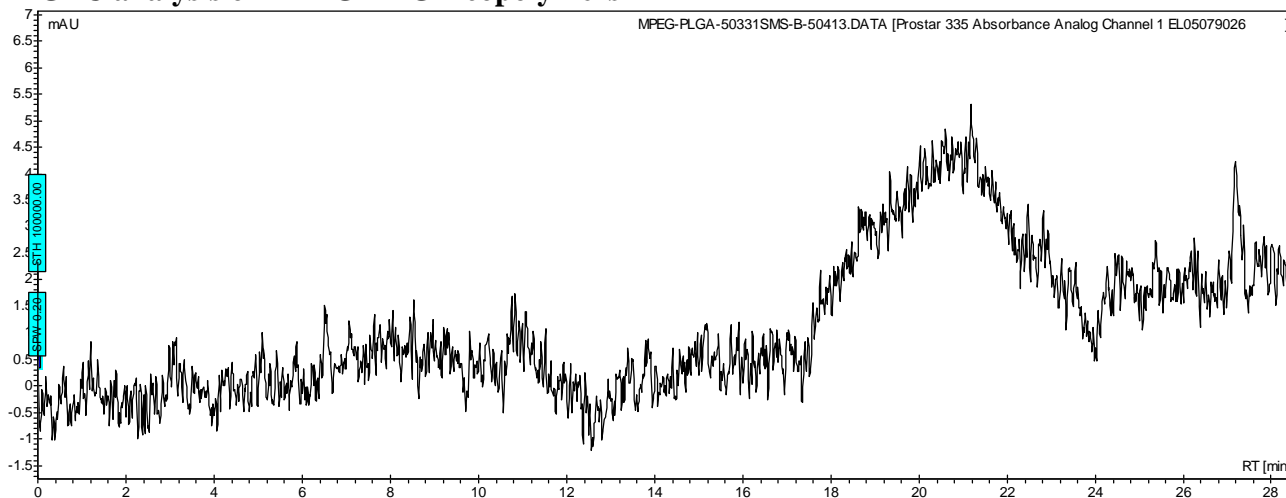


No. AK101 Certificate of Analysis

Product Name: Methoxy Poly(ethylene glycol)-*b*-Poly(D,L-lactic-co-glycolic) acid copolymer (M_w 3,000:20,000 Da, 50:50 LA:GA) (Lot#: 50331SMS)



• GPC analysis of mPEG-PLGA copolymers

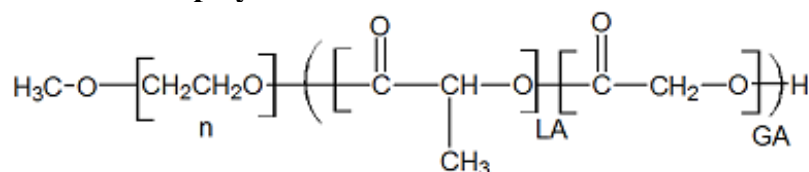


Analysis Method: Varian Prostar system with 1 ml/min DCM flow across two 5 μm Phenogel columns and one Resipore column (Agilent). Detection via UV/Vis, calibrated against polystyrene standards.

| Polymer | Mn (from GPC) | Mw (from GPC) | PDI |
|----------------------|---------------|---------------|------|
| mPEG-PLGA | 9,705 | 27,145 | 2.80 |
| mPEG 3000 initiator* | 3,072 | 3,195 | 1.04 |

*calibrated against PEG standards

• Structure of mPEG-PLGA copolymers



Material provided for research use only. Not for human use.