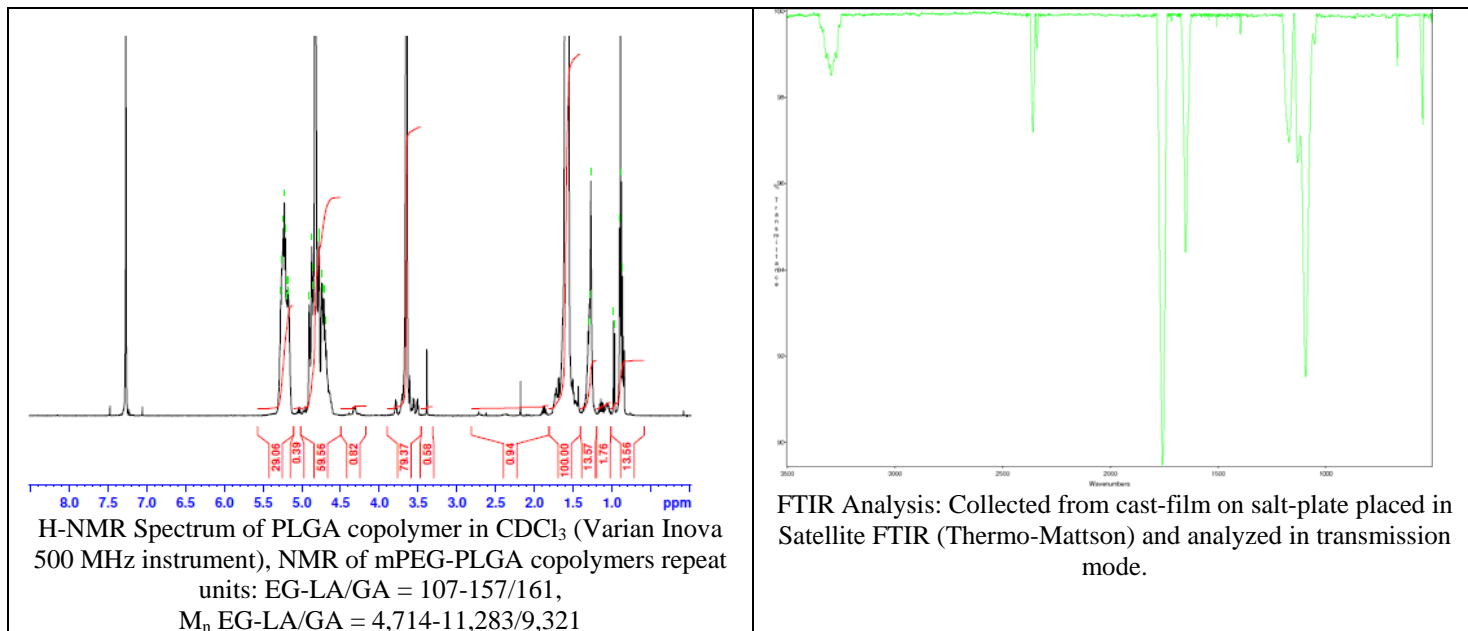
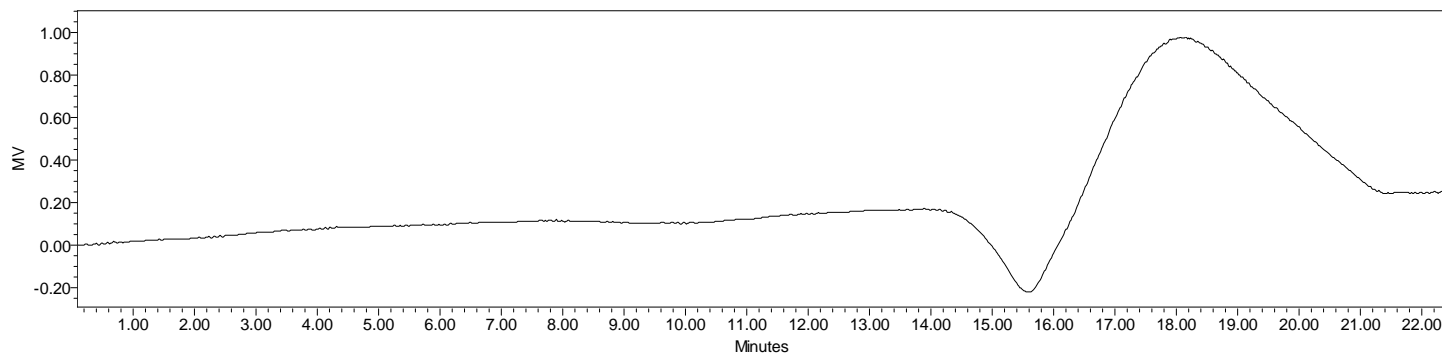


# No. AK037 Certificate of Analysis

Product Name: Methoxy Poly(ethylene glycol)-*b*-Poly(lactic-co-glycolic acid) copolymers  
( $M_w \sim 5,000:20,000\text{Da}$ ) (Lot #: 60216FAJ-E)



- **GPC analysis of mPEG-PLGA copolymers**

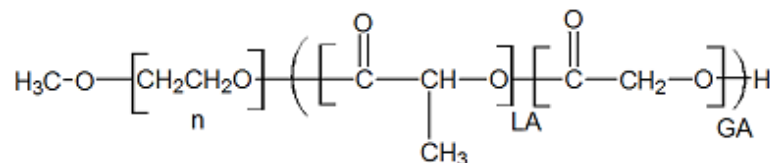


Analysis Method: Waters Breeze 2 system with 1 ml/min DCM flow across three Phenogel 5um columns (Phenomenex). Detection via refractive index, calibrated against polystyrene standards.

| Polymer         | $M_n$ (from GPC) | $M_w$ (from GPC) | PDI  |
|-----------------|------------------|------------------|------|
| mPEG-PLGA       | 19,410           | 32,004           | 1.65 |
| mPEG precursor* | 4,677            | 5,272            | 1.13 |

\*- Run separately, chromatograph not shown

- **Structure of mPEG-PLGA copolymers**



Material provided for research use only. Not for human use.