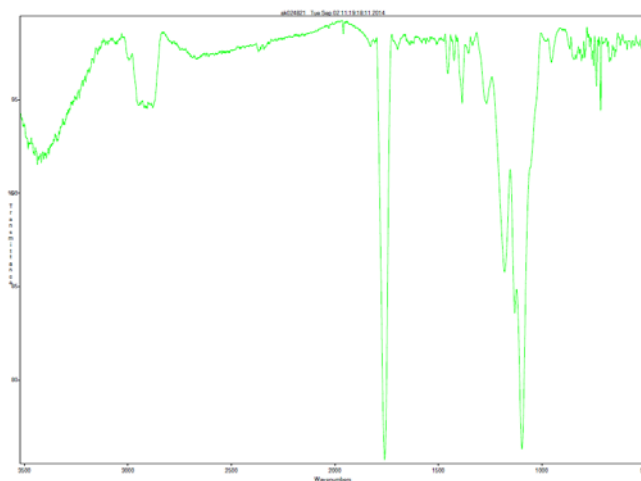
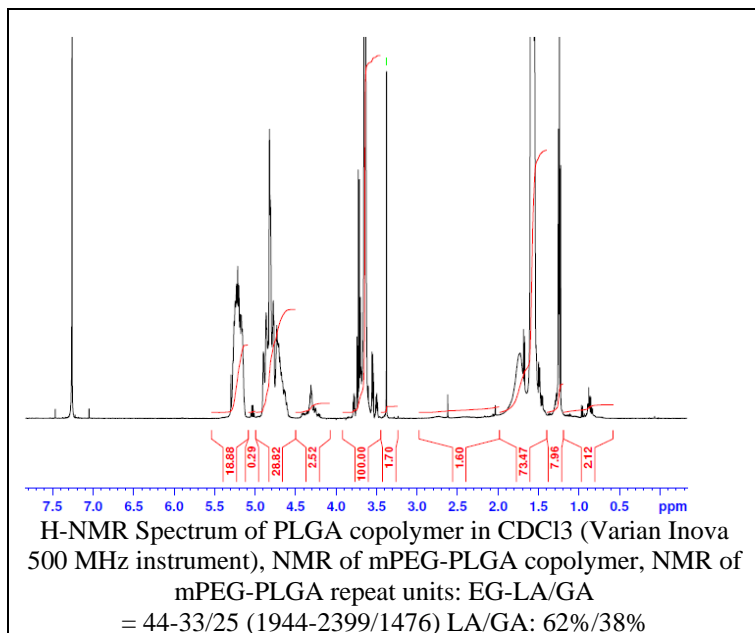


No. AK02

Certificate of Analysis

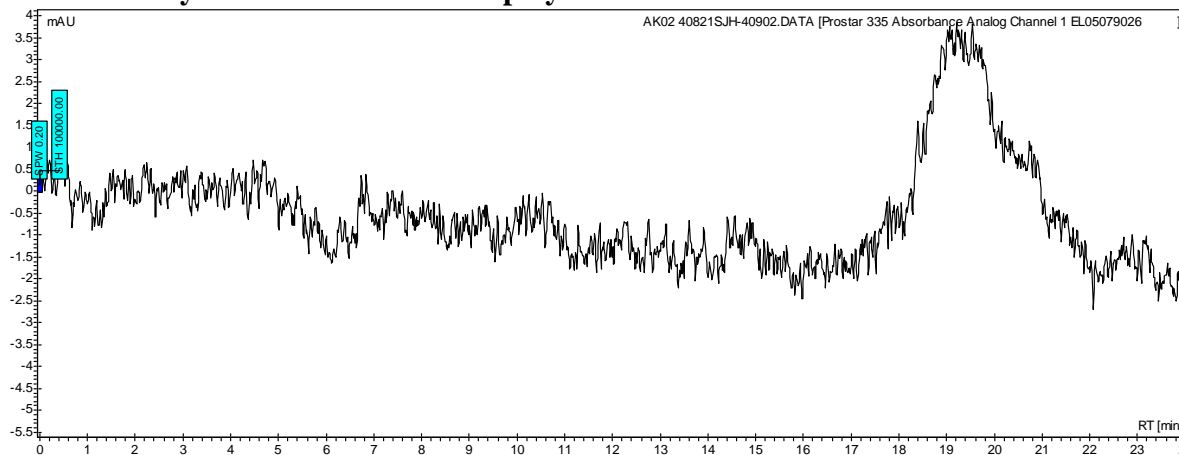
Product Name: Methoxy Poly(ethylene glycol)-b-Poly(lactide-co-glycolide) (60:40)

(M_w: 2,000:4,000 Da) (Lot#: 40821SJH)



FTIR Analysis: Collected from cast-film on KBR salt-plate placed in Satellite FTIR (Thermo-Mattson) and analyzed in transmission mode.

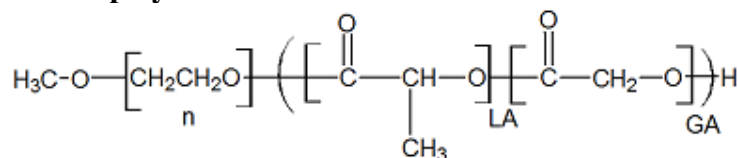
• GPC analysis of mPEG-PLGA copolymer



Analysis Method: Varian Prostar system with 1 ml/min DCM flow across two Phenogel 5 μ m columns and one Resipore column (Agilent). Detection via UV/Vis, calibrated against polystyrene standards.

Polymer	M _n (from GPC)	M _w (from GPC)	PDI
mPEG-PLGA	8,132	11,663	1.43
mPEG precursor	2468	2511	1.02

• Structure of mPEG-PLGA copolymer



Material provided for research use only. Not for human use.