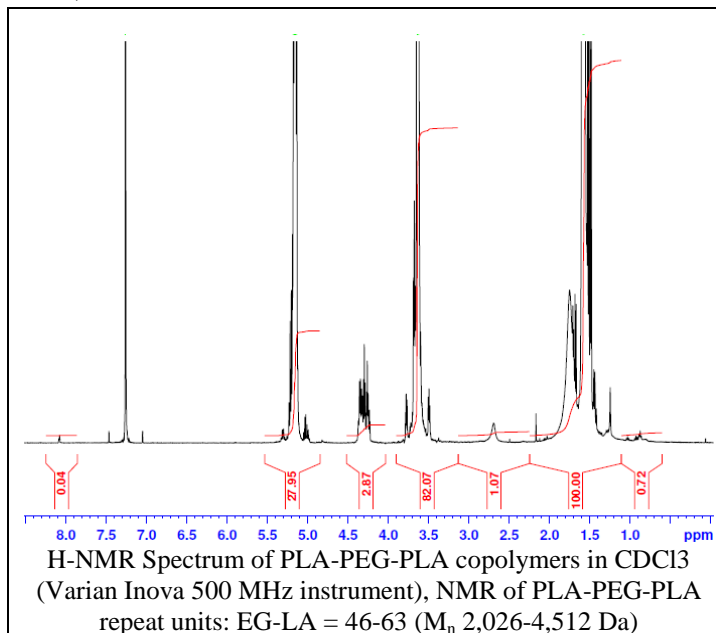


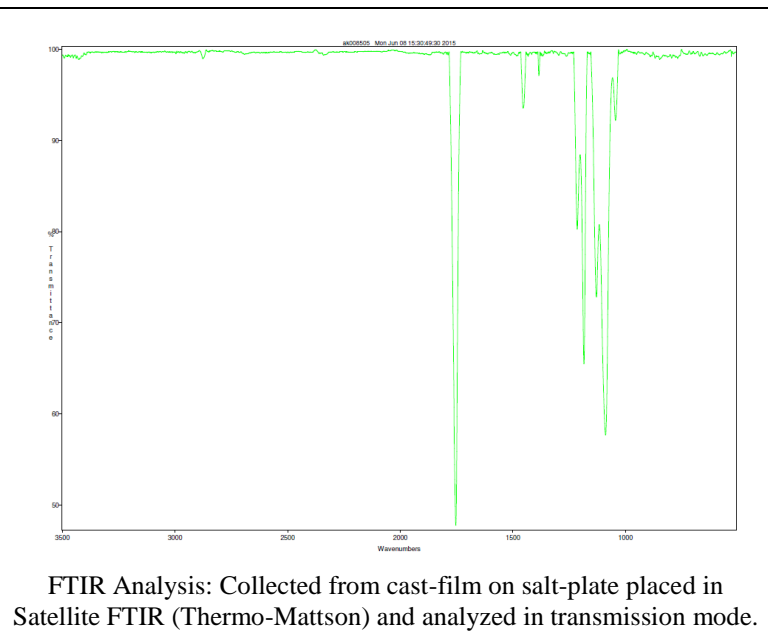
# No. AK008 Certificate of Analysis

Product Name: Poly(L-lactide)-*b*-Poly(ethylene glycol)-*b*-Poly(L-lactide) triblock copolymers  
(2,400:2,000:2,400) (Lot#: 50601MLS)

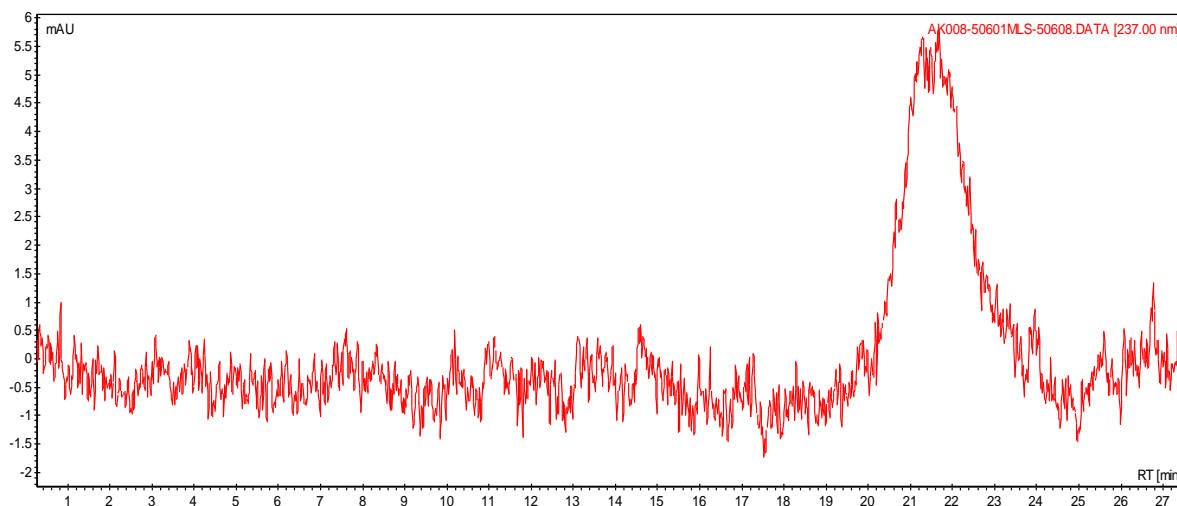
## H-NMR



## FTIR



- GPC analysis of PLA-PEG-PLA copolymers

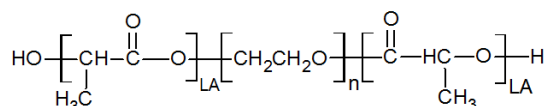


Analysis Method: Varian Prostar system with 1 ml/min DCM flow across two Phenogel 5 μm columns and one Resipore column (Agilent). Detection via UV/Vis, calibrated against polystyrene standards

Polymer	Mn (from GPC)	Mw (from GPC)	PDI
PLLA-PEG-PLLA	5,483	7,668	1.40
PEG Initiator*	2,544	2,566	1.01

\*- against PEG standards

- Structure of PLA-PEG-PLA copolymers



*Material provided for research use only. Not for human use.*