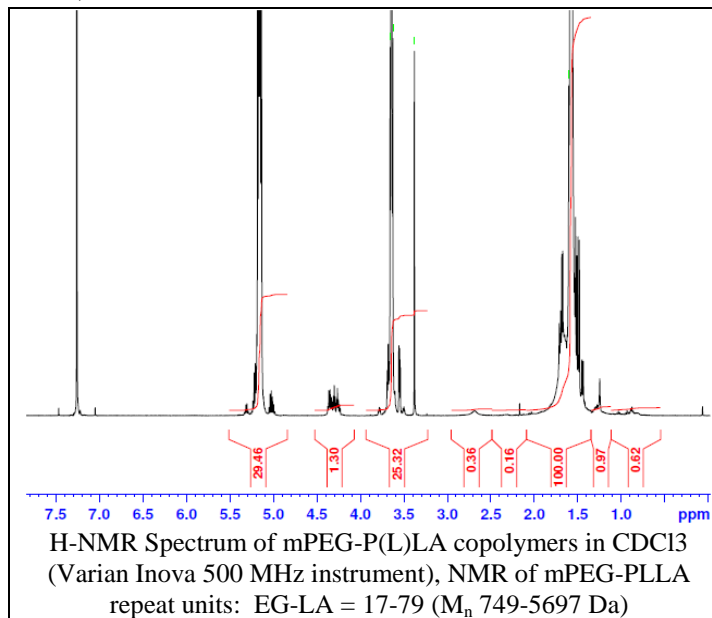


# No. AK006

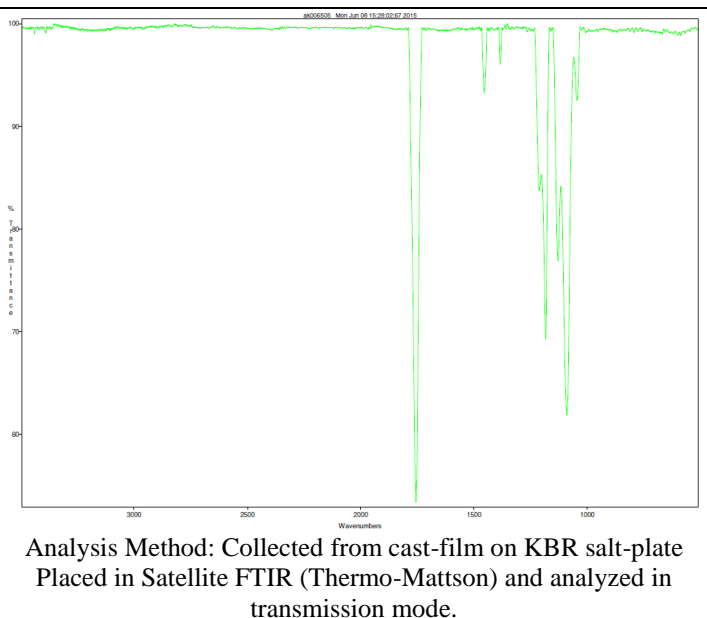
# Certificate of Analysis

Product Name: Methoxy Poly(ethylene glycol)-*b*-Poly((L)lactide) diblock copolymers (750:4,900Da) (Lot#: 50529FAJ)

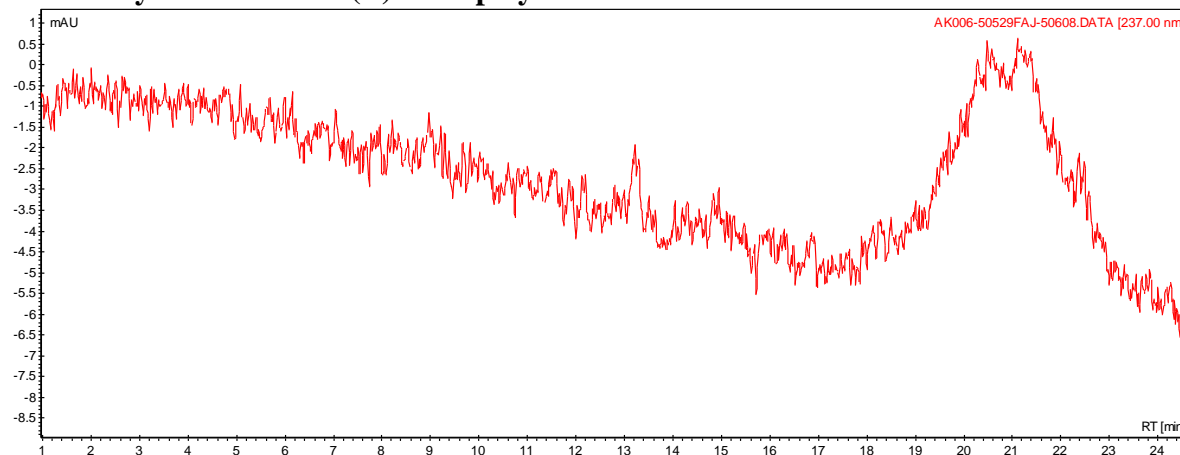
## H-NMR



## FTIR



- **GPC analysis of mPEG-P(L)LA copolymers**

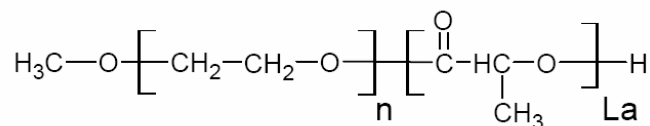


Analysis Method: Varian Prostar system with 1 ml/min DCM flow across two Phenogel 5u columns and one Resipore column (Agilent). Detection via UV/Vis, calibrated against poly(ethylene glycol) standards

Polymer	M <sub>n</sub> (from GPC)	M <sub>w</sub> (from GPC)	PDI
mPEG-P(L)LA	6,231	10,040	1.61
mPEG initiator	*MFG nominal (M <sub>n</sub> 750)		

\*-Data provided by manufacturer

- **Structure of mPEG-P(DL)LA copolymers**



Material provide for research use only. Not for human use.