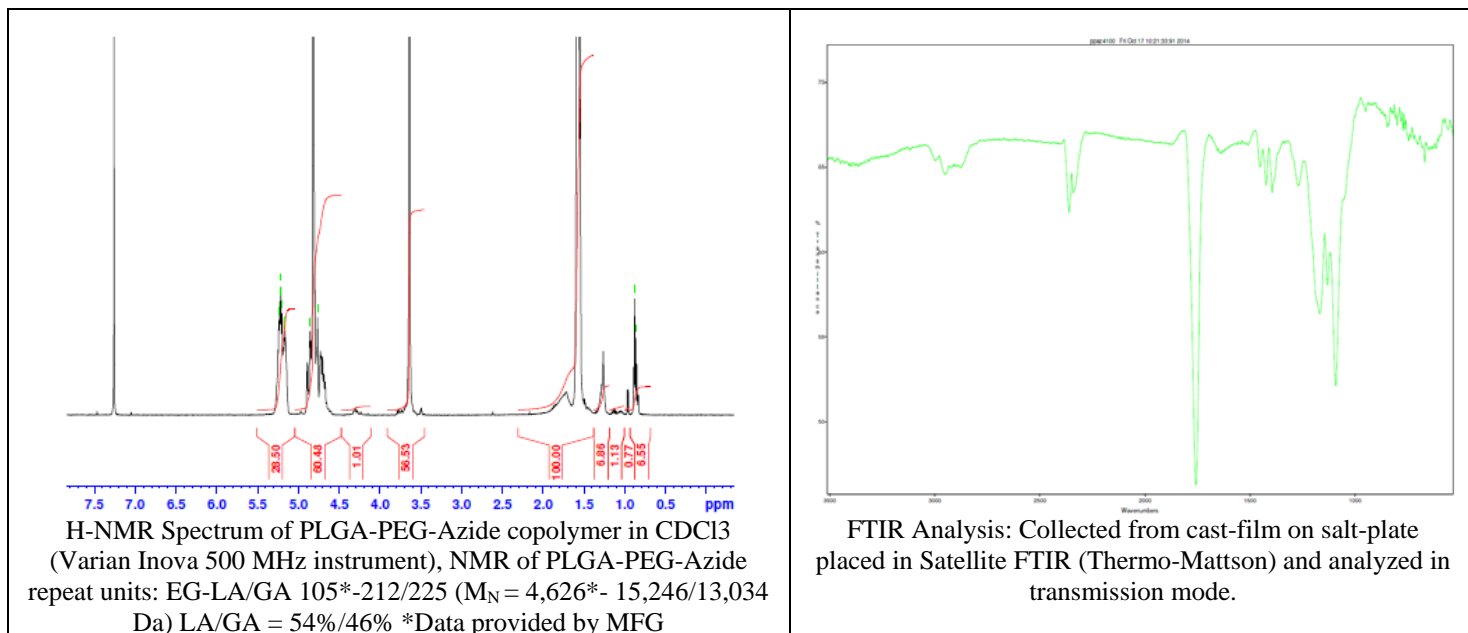


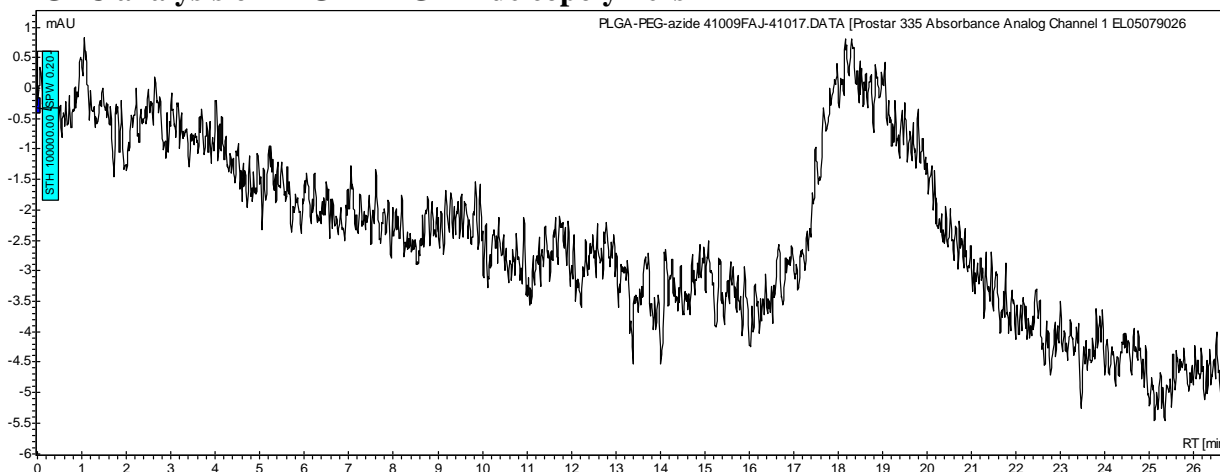
No. AI91

Certificate of Analysis

Product Name: Poly(lactide-co-glycolide)-b-Poly(ethylene glycol)-Azide copolymer ($M_w \sim 30,000:5,000$ Da) (Lot #41009FAJ)



• GPC analysis of PLGA-PEG-Azide copolymers

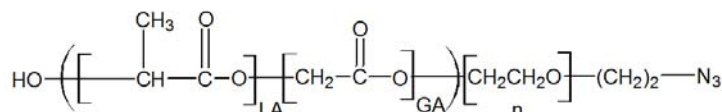


Analysis Method: Varian Prostar system with 1 ml/min DCM flow across two Phenogel 5 μ m columns and one PLgel Resipore column (Agilent). Detection via UV/Vis, calibrated against polystyrene standards.

| Polymer | Mn (from GPC) | Mw (from GPC) | PDI |
|----------------|----------------------------------|---------------|------|
| PLGA-PEG-Azide | 21,268 | 49,574 | 2.33 |
| PEG-Precursor | Average M_n by GFC – 4,600 Da* | | |

*Data provided by MFG

• Structure of PLGA-PEG-Azide copolymers



Material provided for research use only. Not for human use.