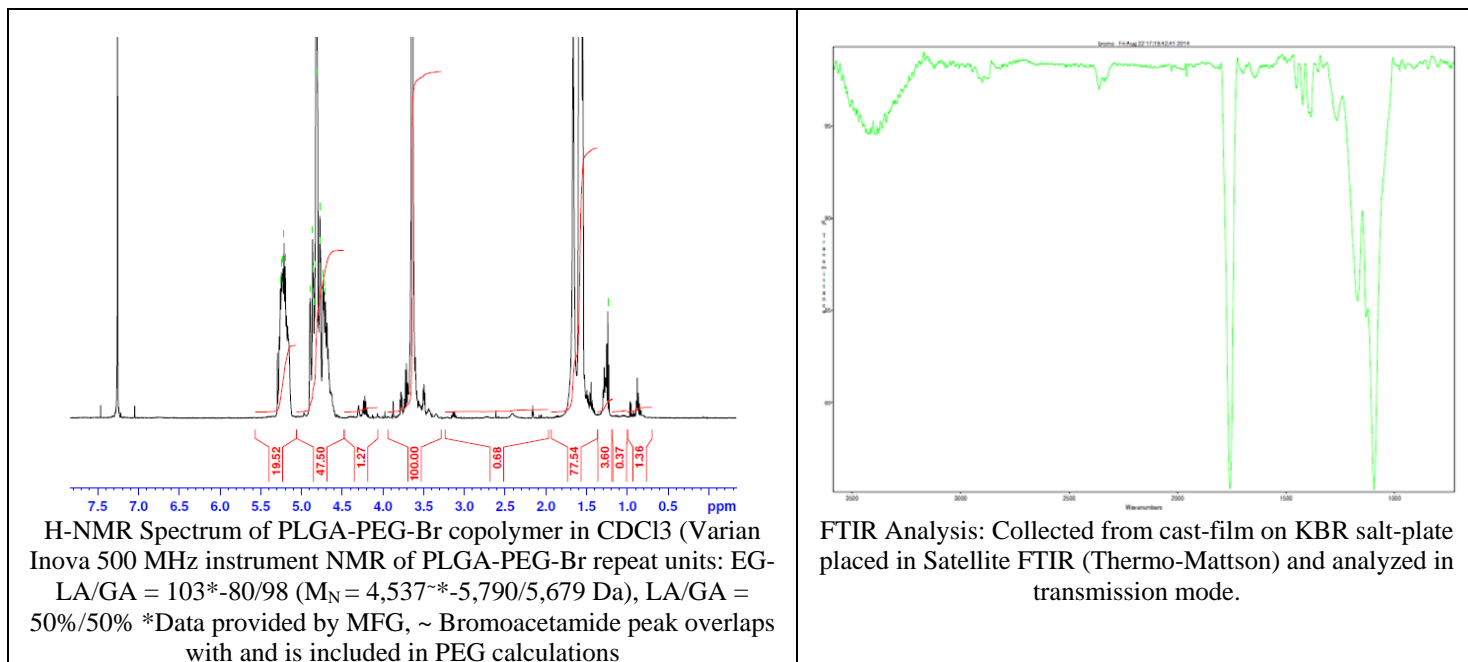


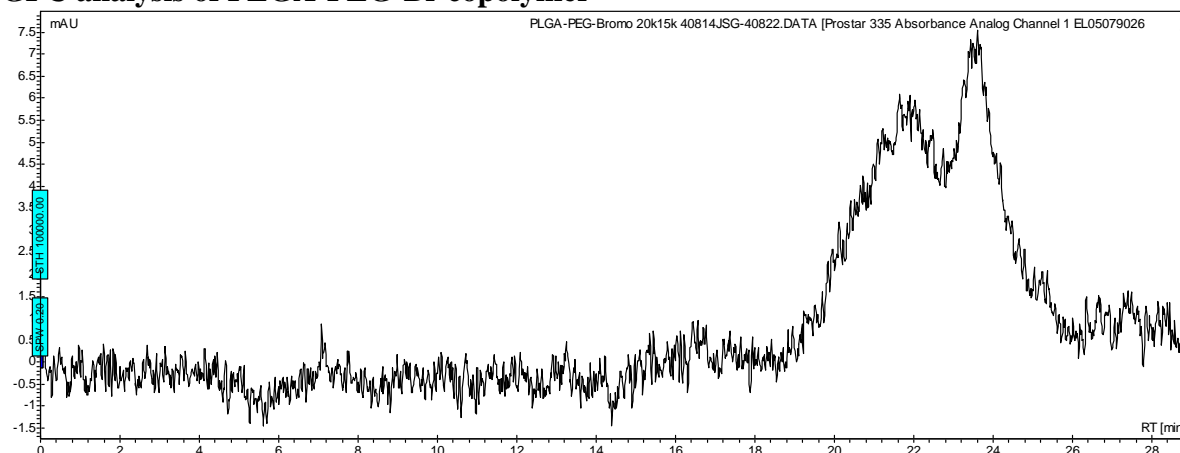
# No. AI84

# Certificate of Analysis

Product Name: Poly(lactide-co-glycolide)-b-Poly(ethylene glycol)-Bromoacetamide copolymer  
( $M_w \sim 10,000:5,000$  Da) (Lot #40814JSG)



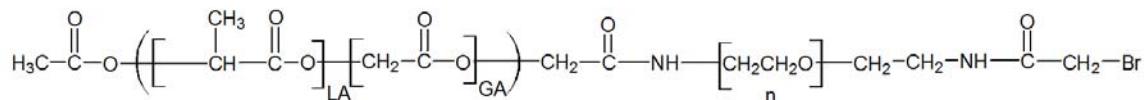
## • GPC analysis of PLGA-PEG-Br copolymer



Analysis Method: Varian Prostar system with 1 ml/min DCM flow across two Phenogel 5 $\mu$ m columns and one PLgel Resipore column (Agilent). Detection via UV/Vis, calibrated against polystyrene standards.

Polymer	Mn (from GPC)	Mw (from GPC)	PDI
PLGA-PEG-Br	6993	16,101	2.30
PEG Precursor	Average $M_w$ by NMR – 4,500*		

## • Structure of PLGA-PEG-Br copolymer



Material provided for research use only. Not for human use.