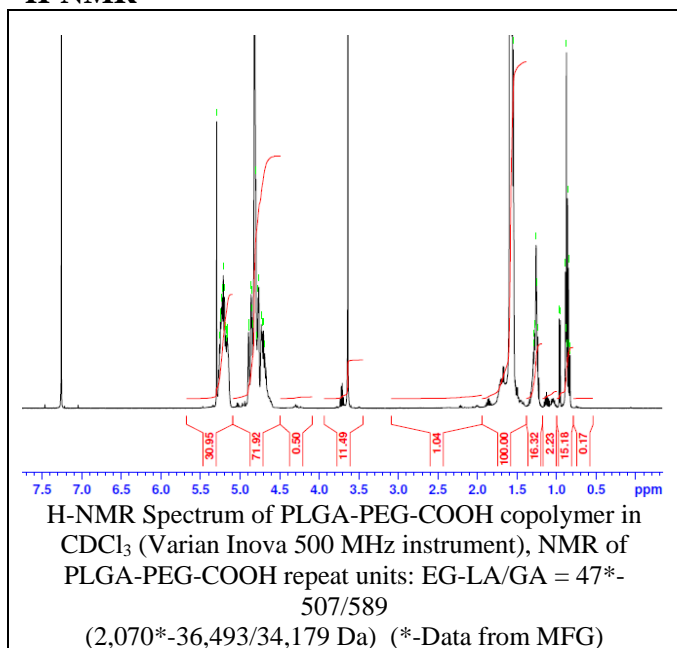


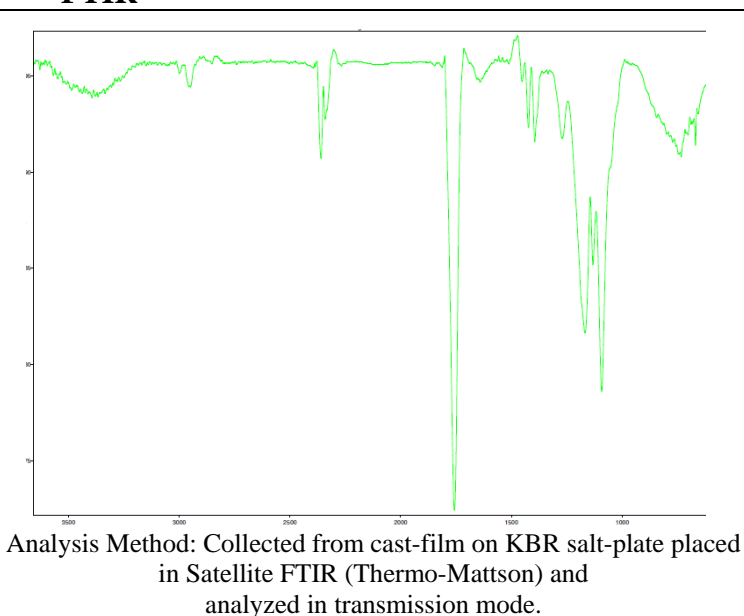
No. AI80 Certificate of Analysis

Product Name: Poly(lactide-co-glycolide)-*b*-Poly(ethylene glycol)-Carboxylic acid endcap
($M_w \sim 70,000:2,000$ Da, 50:50 LA:GA) (Lot#: 40805JSG)

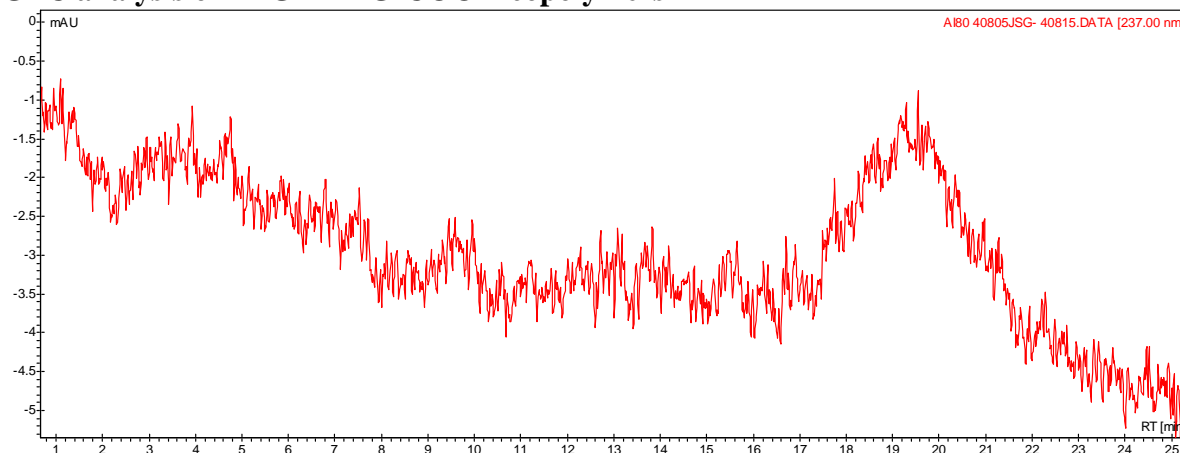
H-NMR



FTIR



• GPC analysis of PLGA-PEG-COOH copolymers

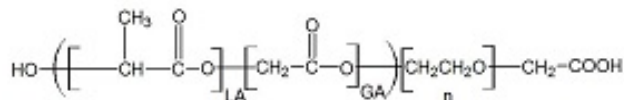


Analysis Method: Varian Prostar system with 1 ml/min DCM flow across two Phenogel 5 μ m columns and one PLgel Resipore column (Agilent). Detection via UV/Vis, calibrated against polystyrene standards.

Polymer	M_n (from GPC)	M_w (from GPC)	PDI
PLGA-PEG-COOH	45,637	88,561	1.94
HO-PEG-COOH*	Average M_w by GFC – 2100 Da*		

*-data provided by MFG

• Structure of PLGA-PEG-COOH copolymers



Material provided for research use only. Not for human use.