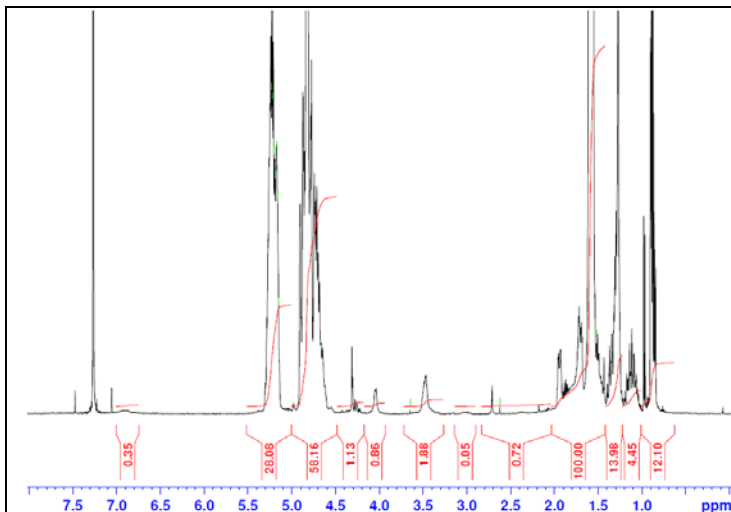


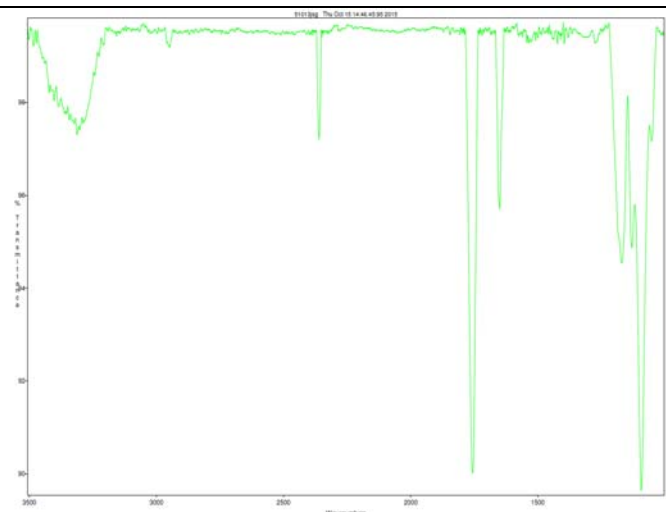
No. AI62

Certificate of Analysis

Product Name: Poly(lactide-co-glycolide) amine endcap (diamine) (Mw: 30,000-40,000Da, 50:50 LA:GA) (Lot#: 51013JSG)

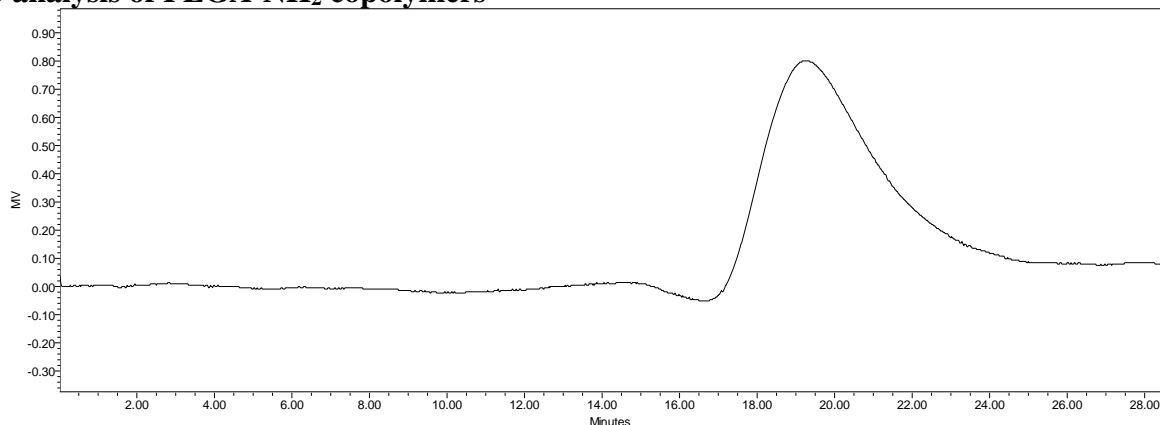


H-NMR Spectrum of PLGA-amine copolymers in CDCl₃ (Varian Inova 500 MHz instrument), NMR of PLGA-amine copolymers: LA/GA = 49:51 molar (55/45 w/w)



Analysis Method: Collected from cast-film on KBR salt-plate placed in Satellite FTIR (Thermo-Mattson) and analyzed in transmission mode.

- **GPC analysis of PLGA-NH₂ copolymers**



Analysis Method: Waters Breeze 2 system with 1 ml/min DCM flow across three Phenogel 5um columns (Phenomenex). Detection via refractive index, calibrated against polystyrene standards.

Polymer	Mn (from GPC)	Mw (from GPC)	PDI
PLGA-NH ₂	28,329	41,496	1.46

- **Structure of PLGA-NH₂ copolymers**

