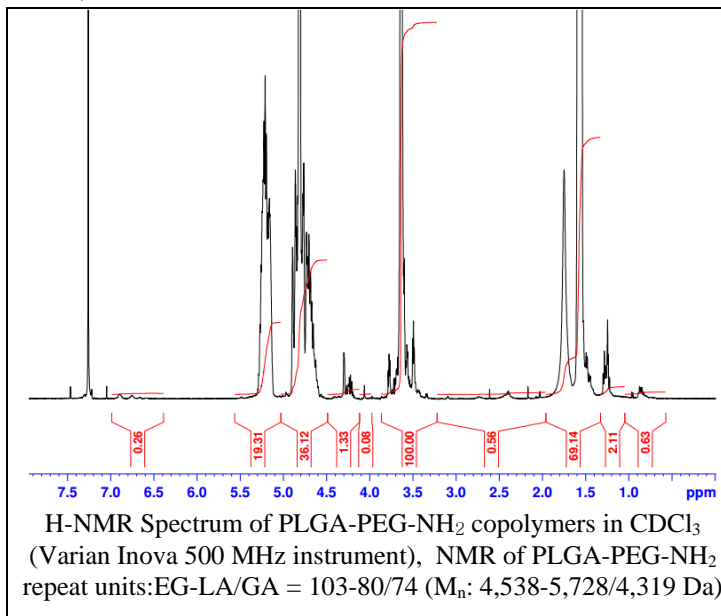


No. AI58

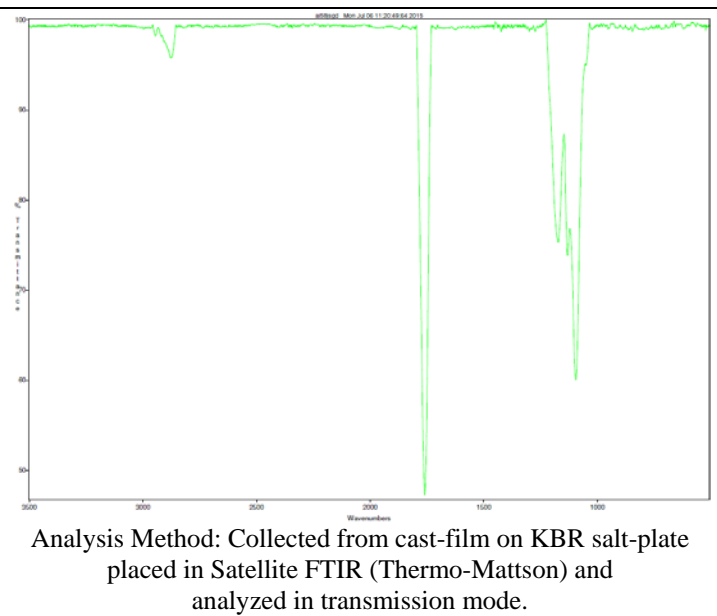
Certificate of Analysis

Product Name: Poly(lactide-co-glycolide)-b-Poly(ethylene glycol)-Amine copolymers
(M_w ~ 12,000:5000Da) (Lot#: 50610JSG-D)

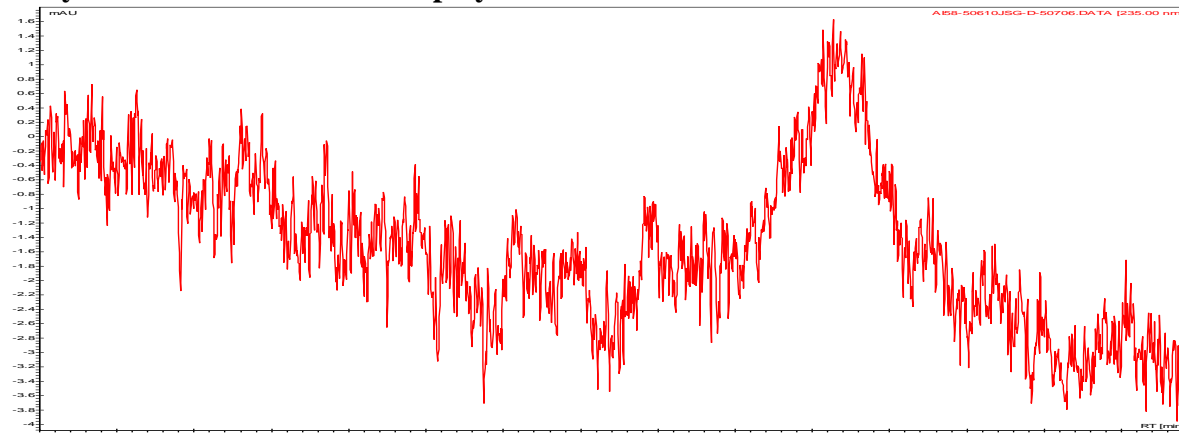
H-NMR



FTIR



- **GPC analysis of PLGA-PEG-NH₂ copolymers**

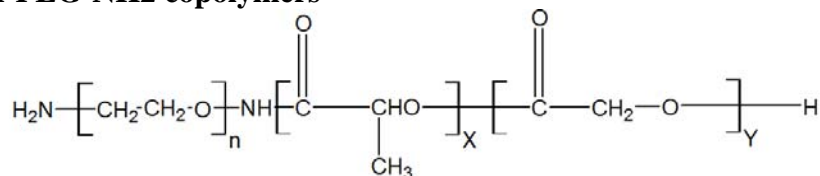


Analysis Method: Varian Prostar system with 1 ml/min DCM flow across two Phenogel 5u columns and one PLgel Resipore columns (Agilent). Detection via UV/Vis, calibrated against polystyrene standards

Polymer	M _n (from GPC)	M _w (from GPC)	PDI
PLGA-PEG-NH ₂	9,556	18,135	1.90
PEG precursor	Average Mw 4500*		

* - Data provided by Manufacturer

- **Structure of PLGA-PEG-NH₂ copolymers**



Material provide for research use only. Not for human use.