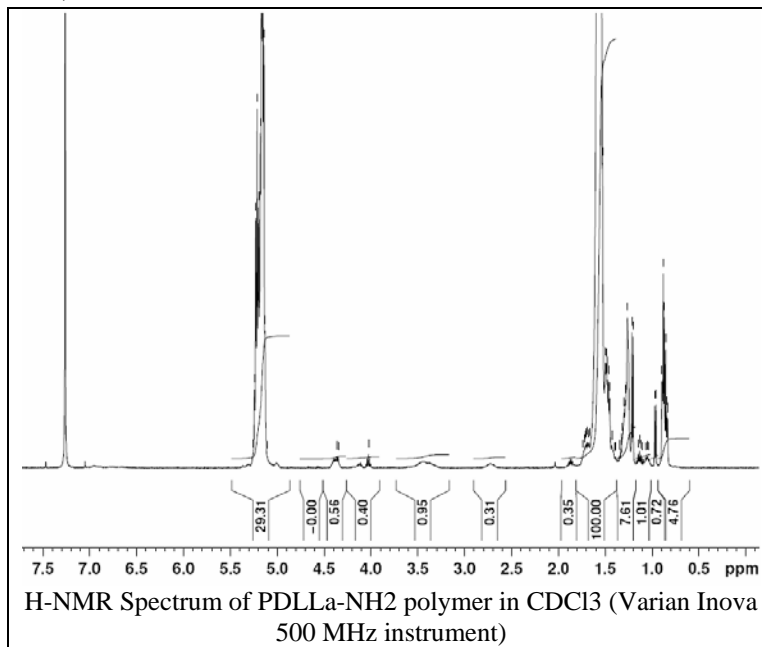


No. AI41

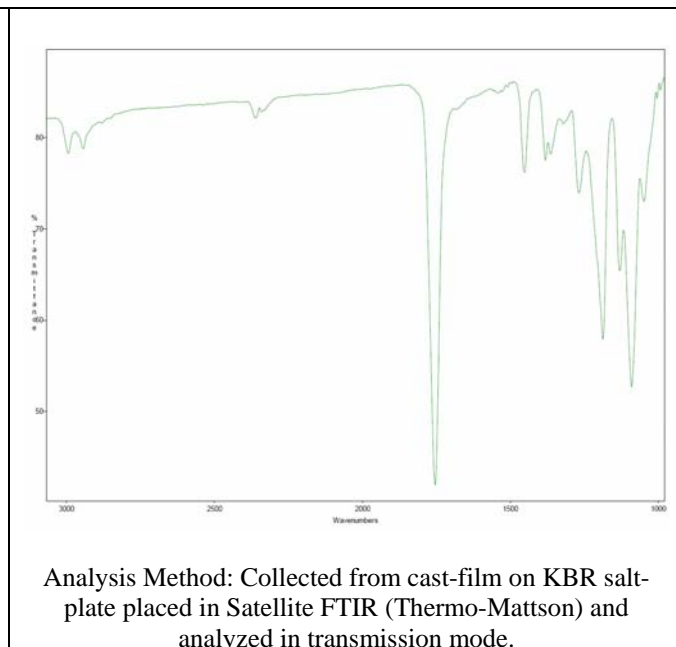
Certificate of Analysis

Product Name: Poly(D,L) Lactide-Amine endcap (Mn – 10,000-15,000Da) (diamine) (Lot#: 30517JSG)

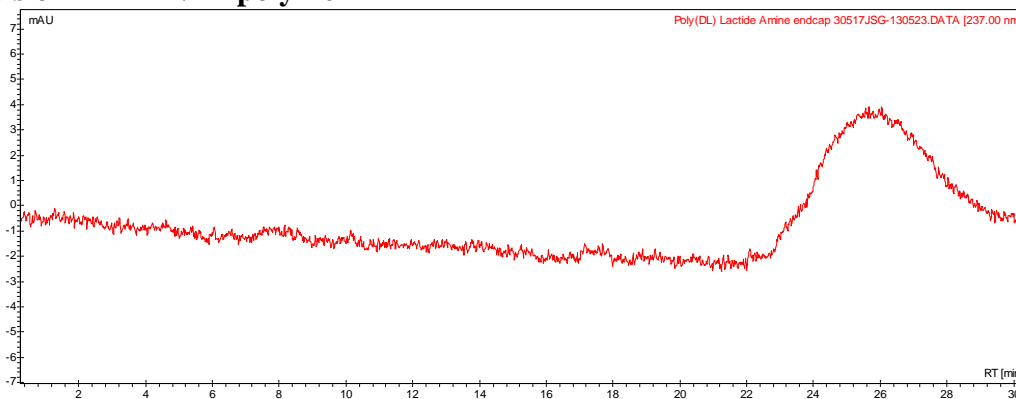
H-NMR



FTIR



- GPC analysis of PLLA-NH₂ polymer



Analysis Method: Varian Prostar system with 1 ml/min DCM flow across four Phenogel 5u columns (Agilent). Detection via UV/Vis, calibrated against polystyrene standards

Polymer	Mn (from GPC)	Mw (from GPC)	PDI
P(D,L)LA-NH ₂	11281	19182	1.70

- Structure of P(D,L)LA-NH₂ polymer

