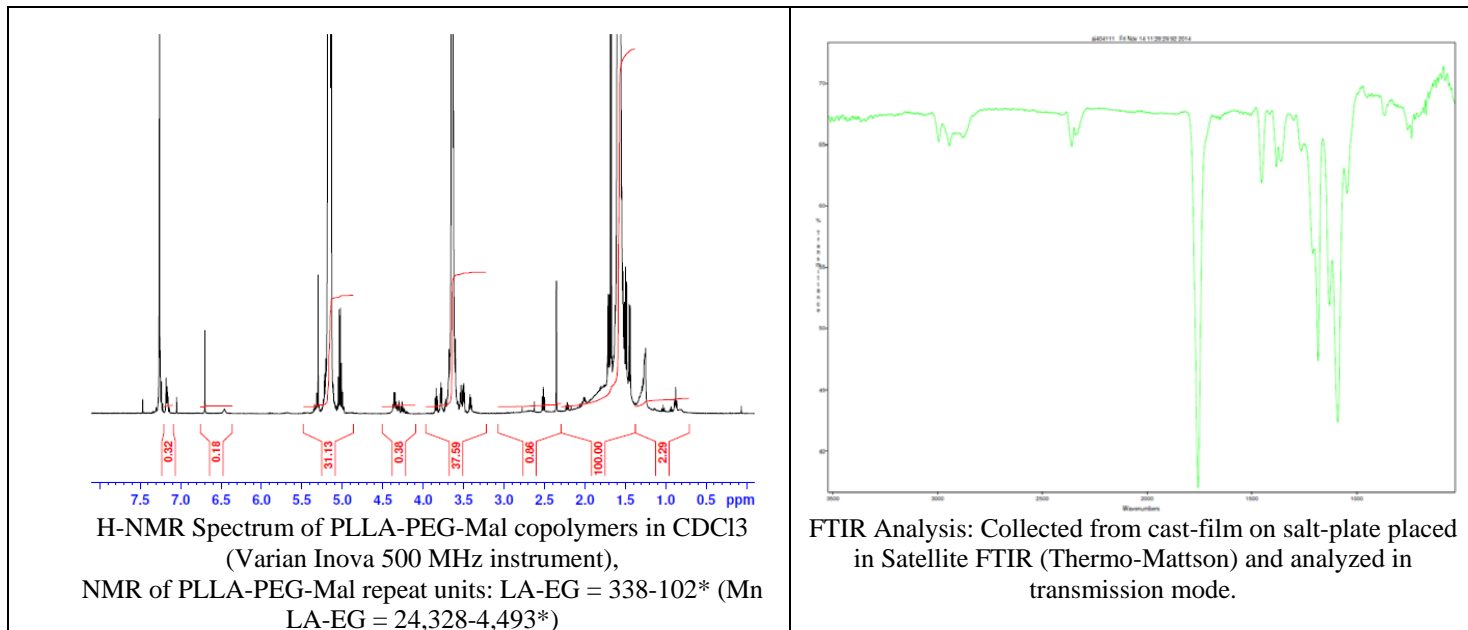


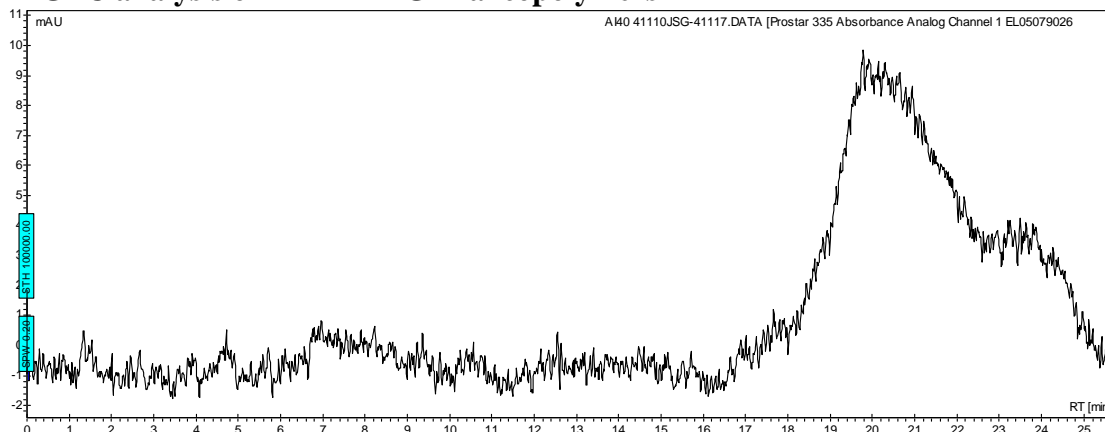
# No. AI40

# Certificate of Analysis

Product Name: Poly(L-lactide)-b-Poly(ethylene glycol)-Maleimide copolymers  
(Mw 30,000:5,000 Da) (Lot#: 41110JSG)



## • GPC analysis of PLLA-PEG-Mal copolymers

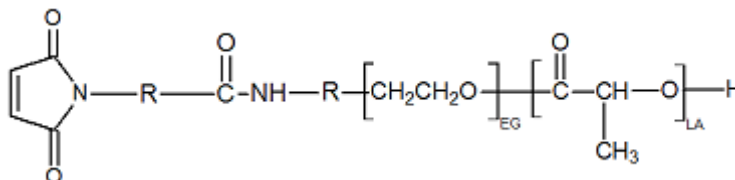


Analysis Method: Varian Prostar system with 1 ml/min DCM flow across two Phenogel 5 $\mu$ m columns and one PLgel Resipore column (Agilent). Detection via UV/Vis, calibrated against polystyrene standards.

Polymer	Mn (from GPC)	Mw (from GPC)	PDI
PLLA-PEG-Mal	23,162	44,288	1.91
PEG Precursor	Average M <sub>N</sub> by GFC-4,500*		

\*-data provided by manufacturer

## • Structure of PLLA-PEG-Mal copolymers



Material provided for research use only. Not for human use.