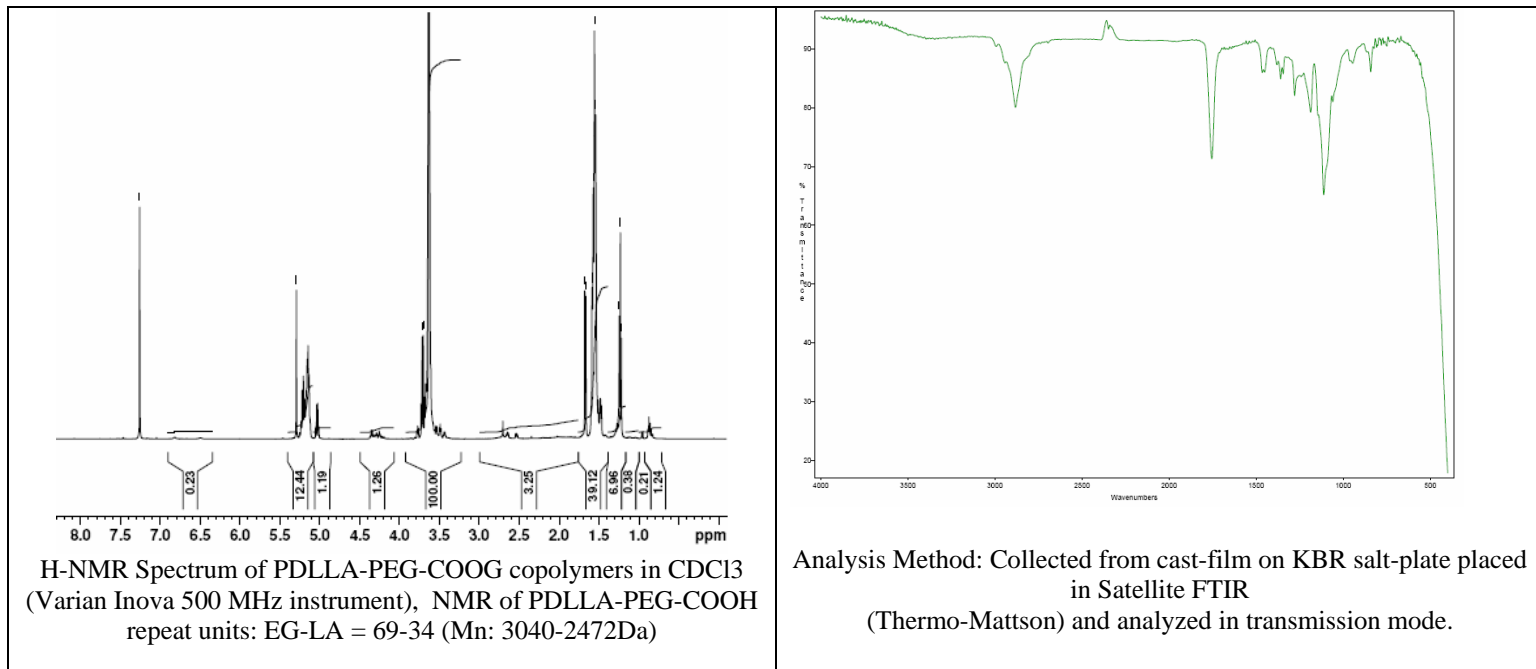


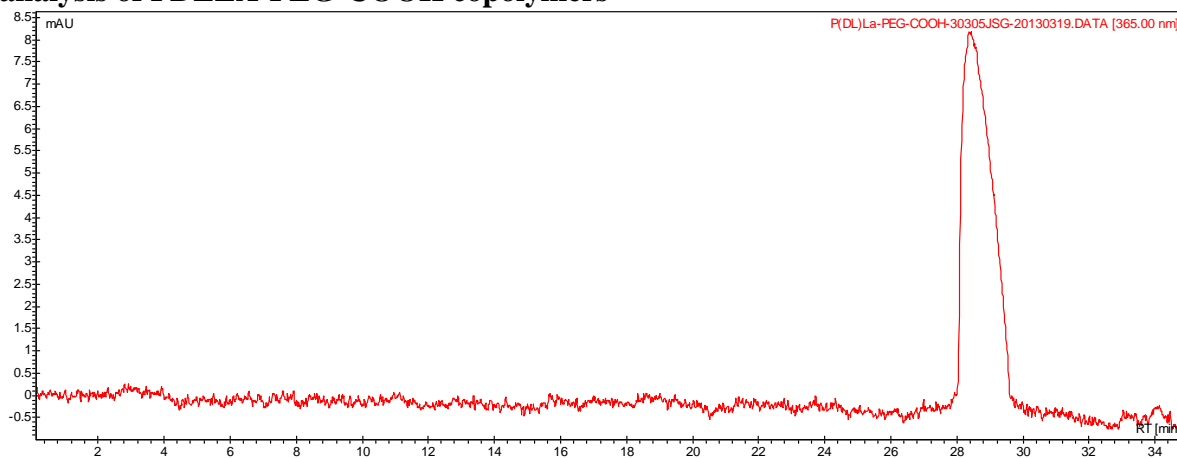
No. AI37

# Certificate of Analysis

Product Name: Poly((D,L)lactide)-b-Poly(ethylene glycol)-Carboxylic acid copolymers  
(Mw ~ 2500:3000Da) (Lot#: 30305JSG) REV:A



- **GPC analysis of PDLLA-PEG-COOH copolymers**



Analysis Method: Varian Prostar system with 1 ml/min DCM flow across two Phenogel 5u columns and one PLgel Resipore columns (Agilent). Detection via UV/Vis, calibrated against polystyrene standards

Polymer	Mn (from GPC)	Mw (from GPC)	PDI
PDLLA-PEG-COOH	5365	5523	1.03
PEG precursor	3073*		1.03*

\* - Information provided by MFG

- **Structure of PDLLA-PEG-COOH copolymers**

