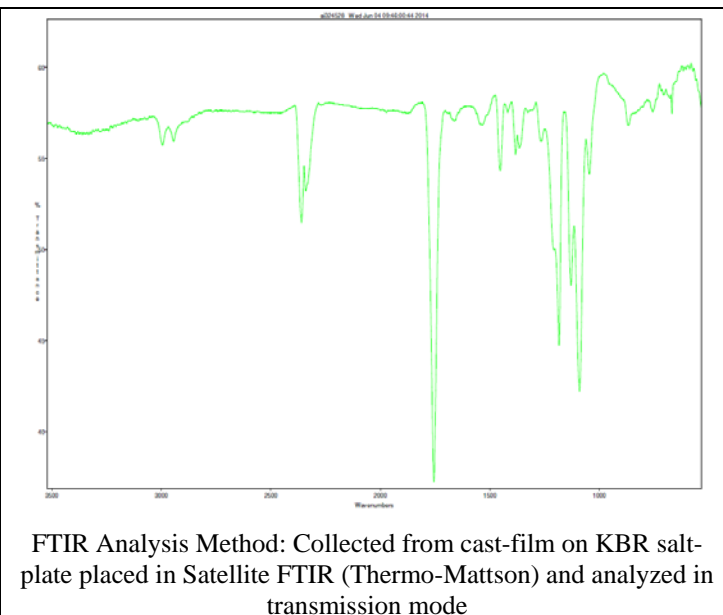
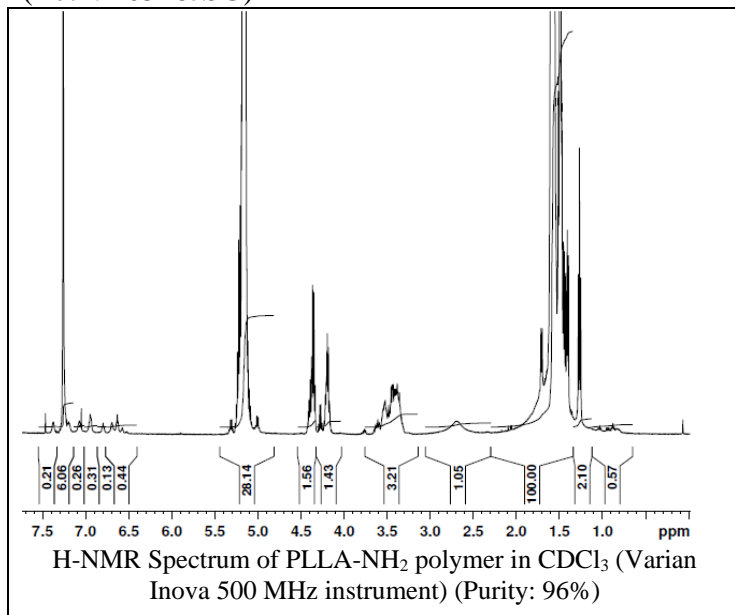


No. AI32

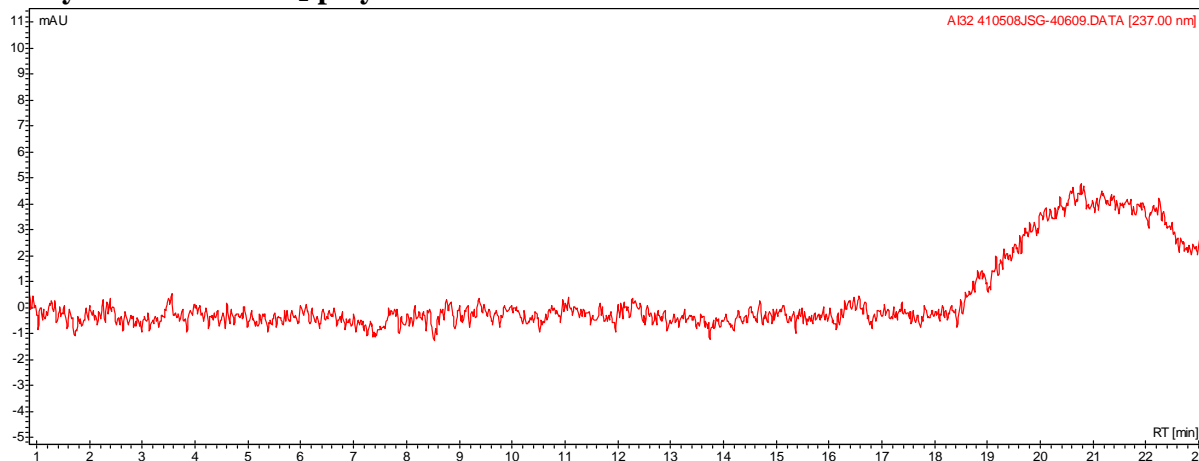
Certificate of Analysis

Product Name: Poly(L-lactic) Acid-Amine endcap (5,000 Da)

(Lot#: 40528JSG)



- GPC analysis of PLLA-NH₂ polymer



Analysis Method: Varian Prostar system with 1 ml/min DCM flow across two Phenogel 5µm columns and one Resipore column (Agilent). Detection via UV/Vis, calibrated against polystyrene standards.

Polymer	M _n (from GPC)	M _w (from GPC)	PDI
PLLA-NH ₂	7755	4974	1.56

- Structure of PLLA-NH₂ polymer

