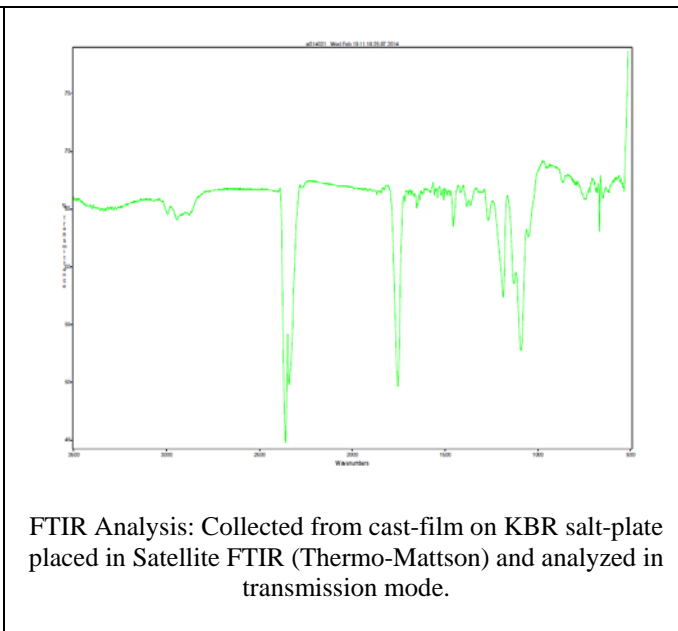
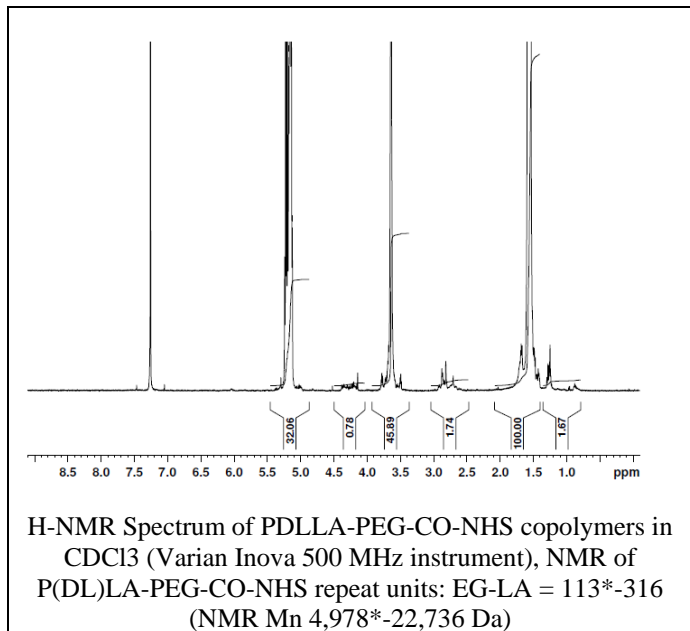


# No. AI31 Certificate of Analysis

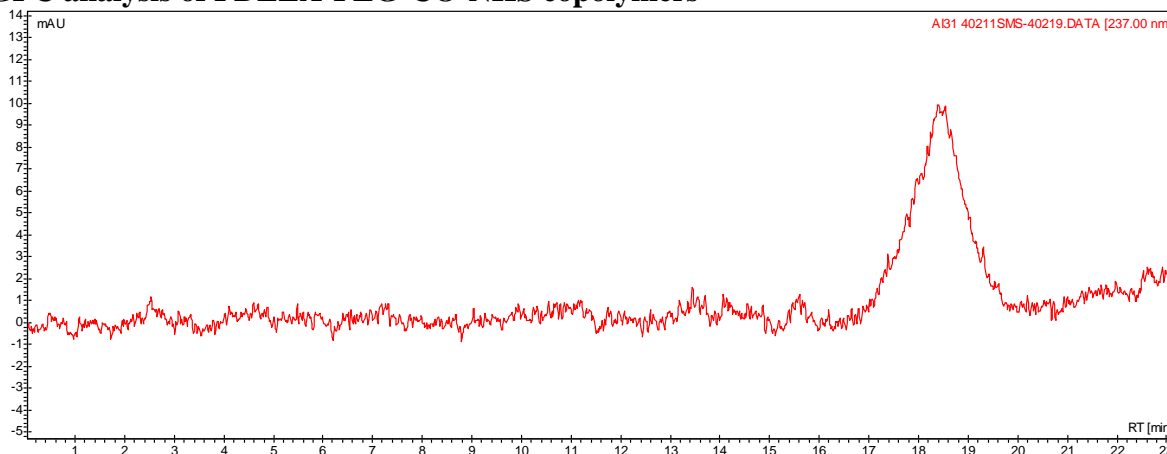
Product Name: Poly((D,L)lactide)-*b*-Poly(ethylene glycol)- carbonyl-n-hydroxysuccinimide copolymers (~16,000:5,000Da) (Lot#: 40211SMS) (REV-A:Updated HNMR calculations)

**HNMR**

**FTIR**



- GPC analysis of PDLLA-PEG-CO-NHS copolymers**



Analysis Method: Varian Prostar system with 1 ml/min DCM flow across two phenogel 5u columns and one Resipore column (Agilent). Detection via UV/Vis, calibrated against polystyrene standards.

Polymer	Mn (from GPC)	Mw (from GPC)	PDI
P(DL)LA-PEG-CO-NHS	20,211	25,641	1.19
HO-PEG-COOH	Mn by GFC 5000 *		

\* - These values based on MFG provided COA for the PEG initiator portion.

- Structure of PDLLA-PEG-CO-NHS copolymers**

