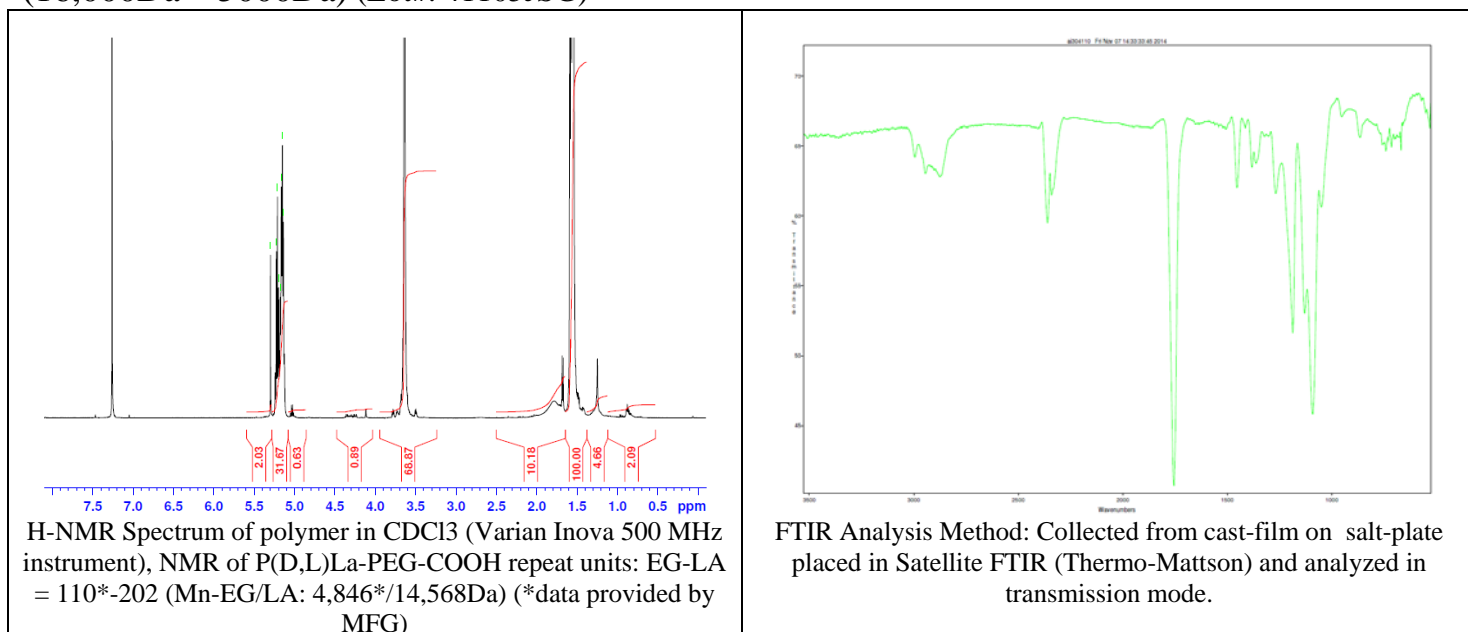


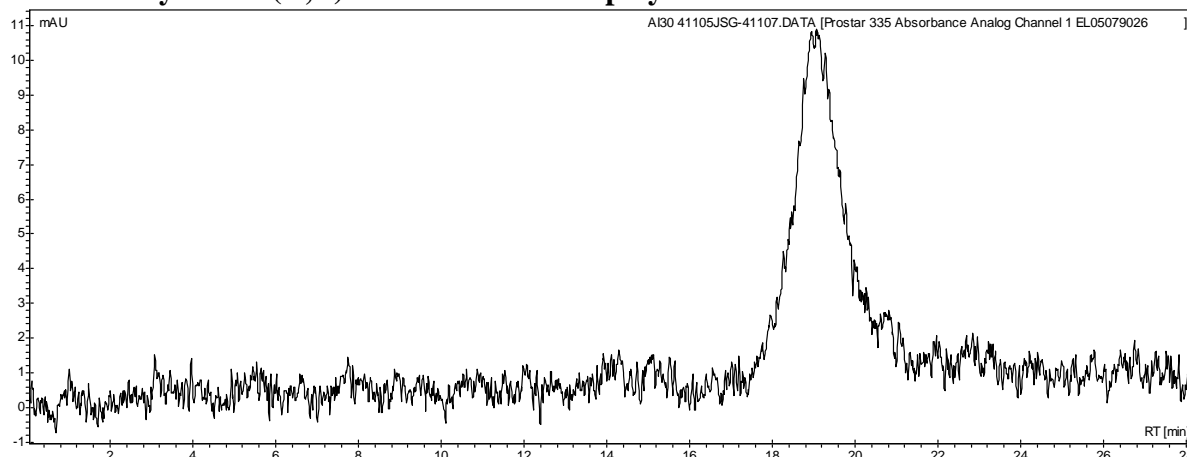
# No. AI30

# Certificate of Analysis

Product Name: Poly((D,L)lactide)-b-Poly(ethylene glycol)- carboxylic acid copolymers  
(16,000Da – 5000Da) (Lot#: 41105JSG)



## • GPC analysis of P(D,L)La-PEG-COOH copolymers

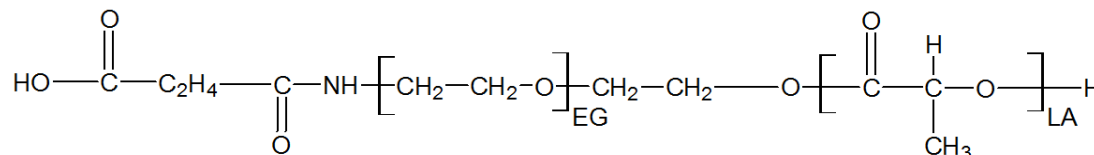


Analysis Method: Varian Prostar system with 1 ml/min DCM flow across two Phenogel 5  $\mu$ m columns and one PLgel Resipore column (Agilent). Detection via UV/Vis, calibrated against polystyrene standards.

Polymer	Mn (from GPC)	Mw (from GPC)	PDI
P(D,L)La-PEG-COOH	16,565	22,401	1.35
HO-PEG-COOH*	Average Mw by GFC - 4600*		

\* - data provided by MFG

## • Structure of P(D,L)La-PEG-COOH copolymers



Material provided for research use only. Not for human use.