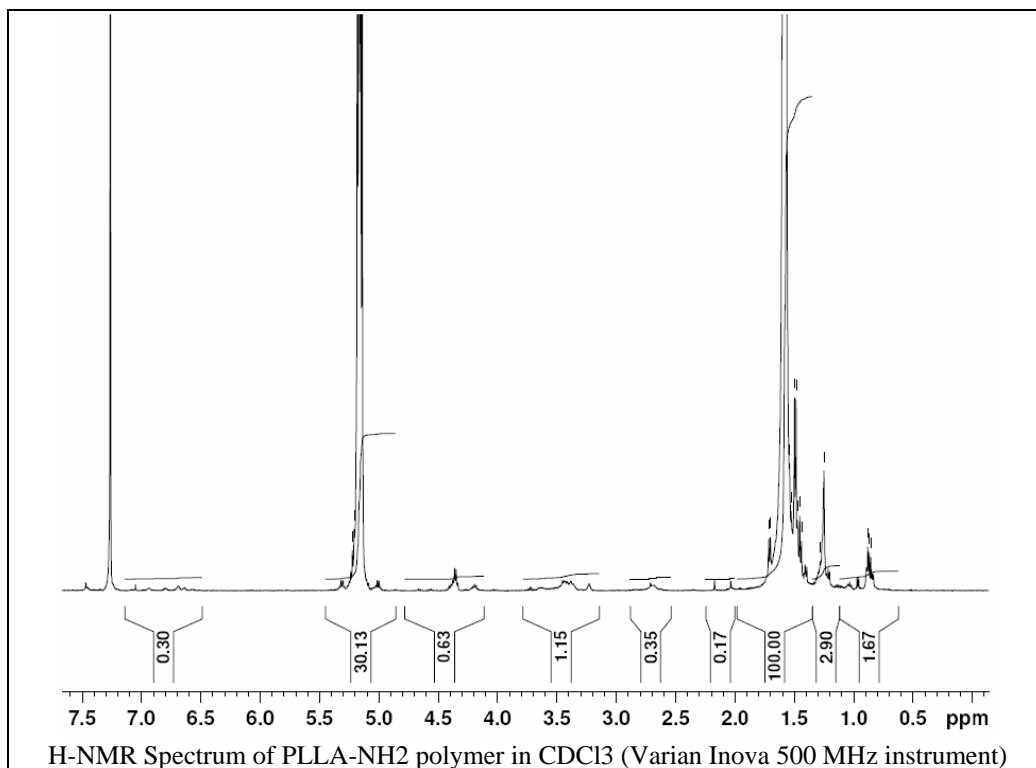


No. AI29

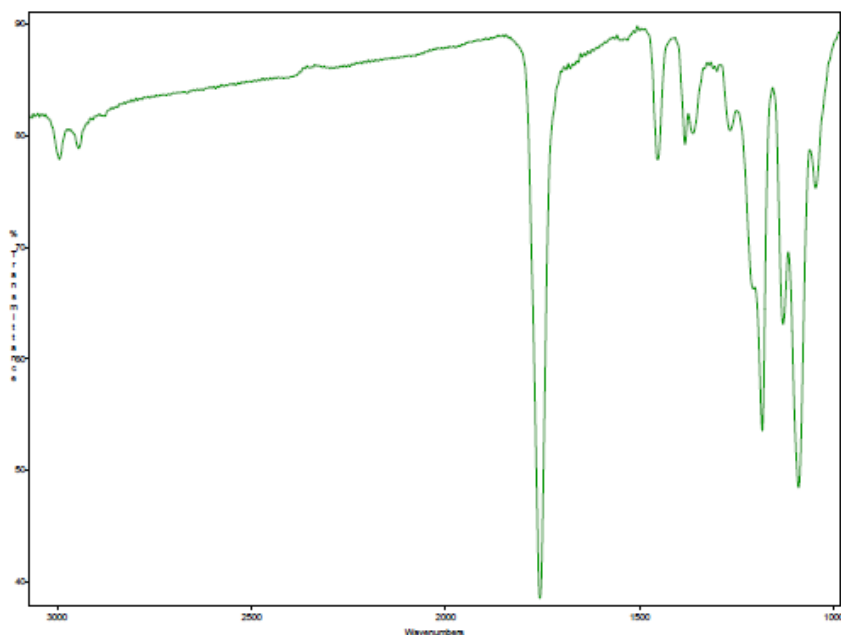
Certificate of Analysis

Product Name: Poly(L-lactic) acid-amine endcap (MW ~ 20,000Da) (Lot#: 30515JSG-F)

- H-NMR analysis of PLLA-NH₂ polymer

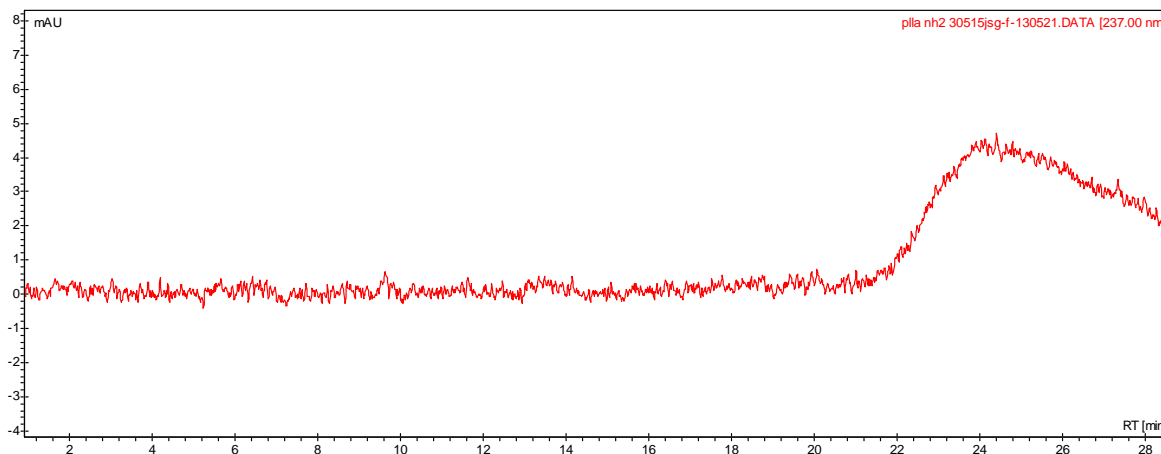


- FTIR analysis of PLLA-NH₂ polymer



Analysis Method: Collected from cast-film on KBR salt-plate placed in Satellite FTIR (Thermo-Mattson) and analyzed in transmission mode.

- **GPC analysis of PLLA-NH2 polymer**



Analysis Method: Varian Prostar system with 1 ml/min DCM flow across four Phenogel 5u columns (Agilent). Detection via UV/Vis, calibrated against polystyrene standards

| Polymer | Mn (from GPC) | Mw (from GPC) | PDI |
|----------|---------------|---------------|------|
| PLLA-NH2 | 19232 | 36137 | 1.88 |

- **Structure of PLLA-NH2 polymer**

