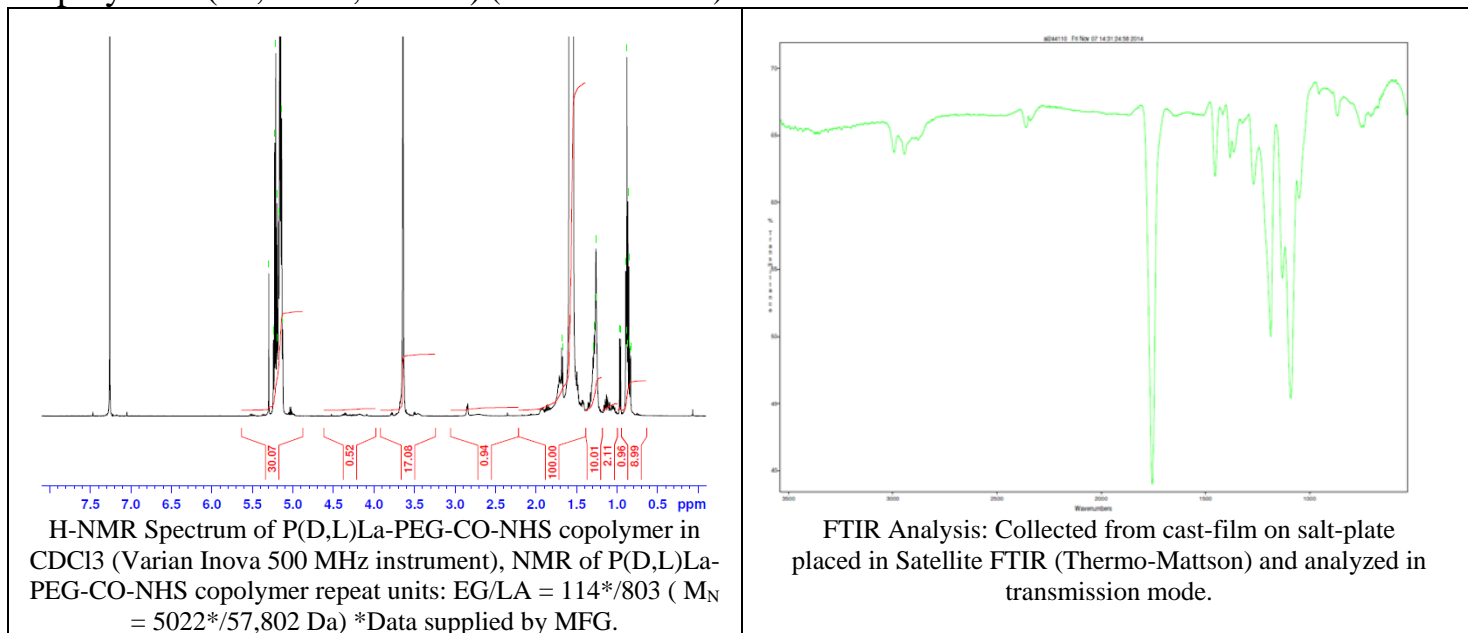


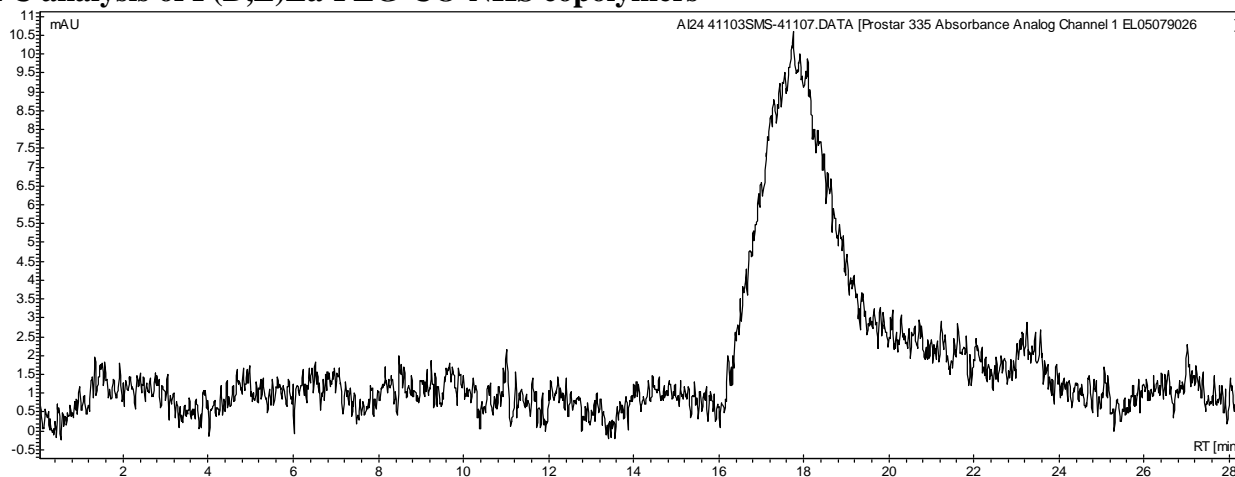
No. AI24

Certificate of Analysis

Product Name: Poly((D,L)lactide)-b-Poly(ethylene glycol)-carbonyl-n-hydroxysuccinimide copolymers (55,000-5,000 Da) (Lot #41103SMS)



• GPC analysis of P(D,L)La-PEG-CO-NHS copolymers

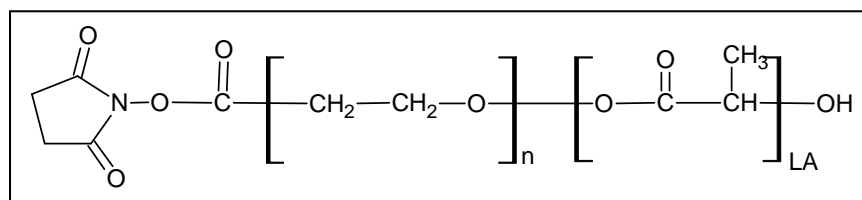


Analysis Method: Varian Prostar system with 1 ml/min DCM flow across two Phenogel 5 μm columns and one Resipore column (Agilent) and with UV-Vis (PDA) detection. Calibrated against polystyrene standards.

Polymer	Mn (from GPC)	Mw (from GPC)	PDI
P(D,L)La-PEG-CO-NHS	47,846	66,170	1.38
PEG Initiator*	Mn by GFC – 5000*		

*Data supplied by MFG.

• Structure of P(D,L)La-PEG-CO-NHS copolymers



Material provided for research use only. Not for human use.