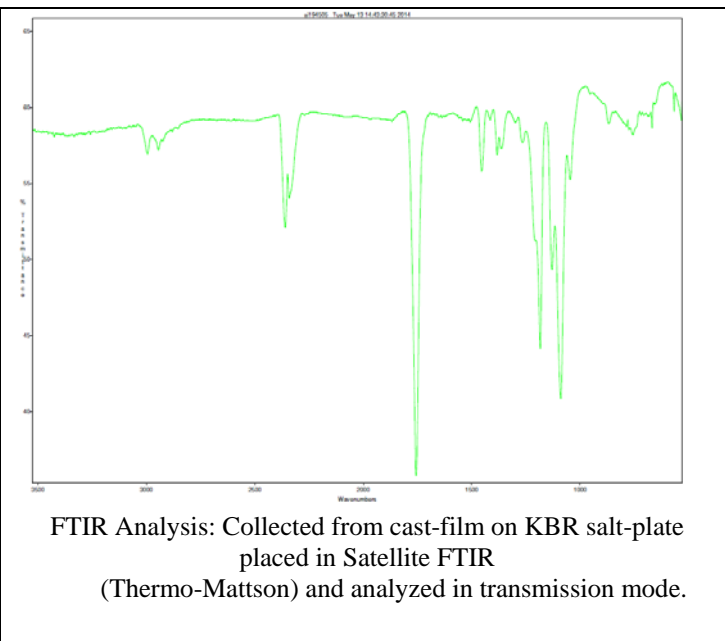
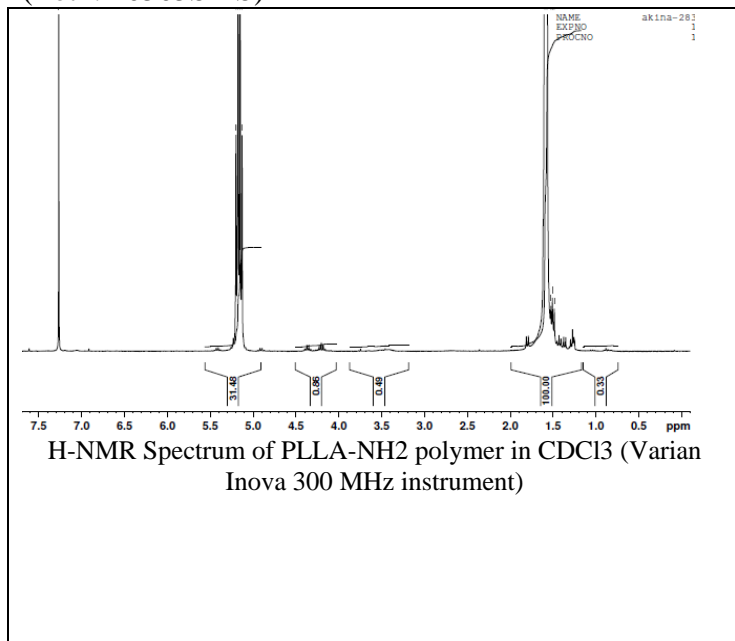


# No. AI19

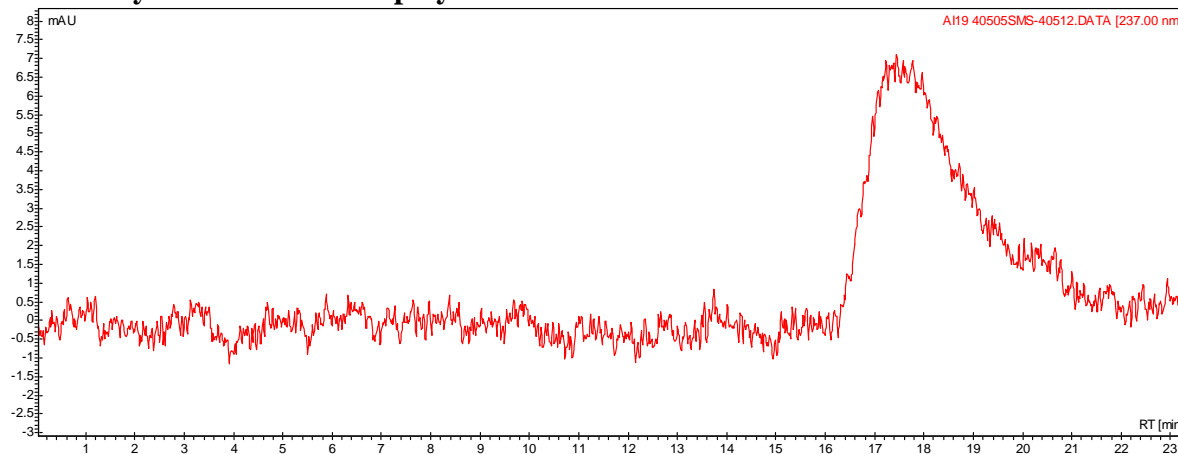
# Certificate of Analysis

Product Name: Poly(L-lactic) acid-amine endcap ( $M_w \sim 40,000$  Da)

(Lot#: 40505SMS)



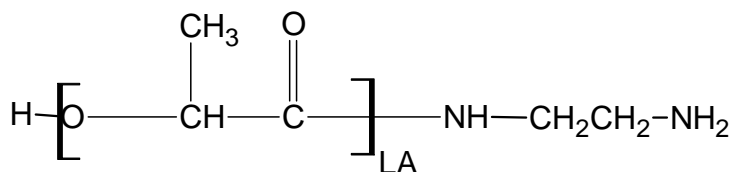
- **GPC analysis of PLLA-NH<sub>2</sub> polymer**



Analysis Method: Varian Prostar system with 1 ml/min DCM flow across two Phenogel 5 $\mu$ m columns and one Resipore column (Agilent). Detection via UV/Vis, calibrated against polystyrene standards

Polymer	$M_n$ (from GPC)	$M_w$ (from GPC)	PDI
PLLA-NH <sub>2</sub>	22905	44,401	1.94

- **Structure of PLLA-NH<sub>2</sub> polymer**



Material provided for research use only. Not for human usage.